

RESOLUTION NO. 2026-02-1251R

CITY OF TONTITOWN, WASHINGTON COUNTY, ARKANSAS

A RESOLUTION OF THE CITY COUNCIL OF THE CITY OF TONTITOWN, ARKANSAS, AUTHORIZING THE ACCEPTANCE OF A CONTRACT WITH CK CIVIL ENGINEERING, LLC FOR A WASTEWATER MASTER PLAN AND AUTHORIZING THE MAYOR TO EXECUTE SAME

WHEREAS, the City of Tontitown has previously entered into an Agreement with CK Civil Engineering, LLC, dated June 7, 2024; and

WHEREAS, CK Civil Engineering, LLC has submitted “Task Order No. 6” for professional engineering services entitled “Tontitown Wastewater Master Plan,”; and

WHEREAS, the purpose of the Task Order is to perform a hydraulic evaluation of the City’s wastewater collection system, develop calibrated modeling, identify existing and future capacity deficiencies, and prepare a Capital Improvement Plan for the sewer system; and

WHEREAS, the Task Order provides for professional engineering services in an amount not to exceed One Hundred Ninety-Five Thousand Eight Hundred Eighty Dollars (\$195,880.00), plus reimbursable expenses estimated at \$1,500.00, for a total estimated contract amount of approximately \$200,000.00, to be paid from the City’s sewer budget; and

WHEREAS, the City Council finds that acceptance of the Task Order is in the best interests of the City and is necessary for long-term wastewater planning, regulatory compliance, and orderly growth, and further finds that it is appropriate to authorize the Mayor to execute the Task Order and any related documents on behalf of the City.

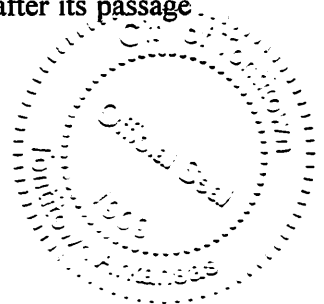
NOW, THEREFORE, BE IT RESOLVED by the City Council of the City of Tontitown as follows:

Section 1. The Contract and Task Order No. 6 with CK Civil Engineering, LLC for the Tontitown Wastewater Master Plan is hereby accepted and approved in substantially the form presented to the City Council.

Section 2. The Mayor of the City of Tontitown is hereby authorized and directed to execute the Task Order and any related documents necessary to carry out the intent of this Resolution, subject to the terms and conditions of the underlying agreement

Section 3. All actions previously taken by City officials and staff that are consistent with this Resolution are hereby ratified and confirmed.

Section 4. This Resolution shall be in full force and effect from and after its passage and adoption.



PASSED and APPROVED this 17 day of Feb, 2026.

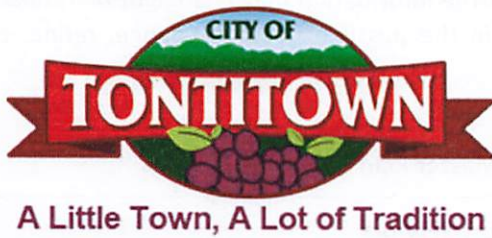
APPROVED:

Angela Russell
Angela Russell, Mayor

ATTEST:

Rhonda Ardemagni
Rhonda Ardemagni – City Clerk/Treasurer





CK CIVIL ENGINEERING

155 Fantinel Dr. Suite D
 Springdale, AR 72762
 479-200-5242
 ck-civil.com

TASK ORDER NO. 6

In accordance with the Main Agreement, of the Agreement Between the City of Tontitown, Arkansas (Owner) and CK Civil Engineering, LLC (Engineer)—Task Order Edition dated [06/07/2024], Owner and Engineer agree as follows:

1. TASK ORDER DATA

a.	Effective Date of Task Order:	Jan 1st, 2026
b.	Owner:	City of Tontitown
c.	Engineer:	CK Civil Engineering LLC
d.	Specific Project (title)	Tontitown Wastewater Master Plan
e.	Specific Project (description):	Perform hydraulic evaluation of existing Tontitown sewer system, complete with calibrated modeling efforts, to identify deficiencies in sewer capacity under current and future population projections. Project includes a Capital Improvement Plan based on current and future needs for the collection system.
f.	Related Task Orders Supplemented by this Task Order: Superseded by this Task Order:	N/A

2. BASELINE INFORMATION

Baseline Information. Owner has furnished the following Specific Project information to Engineer as of the Effective Date of the Task Order. Engineer's scope of services has been developed based on this

Task Order.

EJCDC® E-505, Agreement between Owner and Engineer for Professional Services—Task Order Edition.
 Copyright® 2020 National Society of Professional Engineers, American Council of Engineering Companies,
 and American Society of Civil Engineers. All rights reserved.

information. As the Specific Project moves forward, some of the information may change or be refined, and additional information will become known, resulting in the possible need to change, refine, or supplement the scope of services.

Specific Project Title:	Tontitown Wastewater Master Plan
Type and Size of Facility:	Sanitary Sewer Distribution Network
Description of Improvements:	Perform hydraulic evaluation of existing Tontitown sewer system, complete with calibrated modeling efforts, to identify deficiencies in sewer capacity under current and future population projections. Project includes a Capital Improvement Plan based on current and future needs for the collection system.
Expected Construction Start:	N/A
Prior Studies, Reports, Plans:	Tontitown Sewer Evaluation Report
Facility Location(s):	Tontitown Sewer Collection System
Current Specific Project Budget:	Approximately \$200,000
Funding Sources:	Sewer Budget
Known Design Standards:	City of Tontitown Water and Sewer Standards
Known Specific Project Limitations:	As shown in the exhibit A.
Specific Project Assumptions:	N/A
Other Pertinent Information:	N/A

3. SERVICES OF ENGINEER (“SCOPE”)

- A. The specific Basic Services to be provided or furnished by Engineer under this Task Order are: Appendix A to Task Order, “Engineer’s Services for Task Order,” as attached to this specific Task Order.
- B. All of the services included above comprise Basic Services for purposes of Engineer’s compensation under this Task Order.
- C. Additional Services: Services not expressly set forth as Basic Services in Paragraph 3.A above, and necessary services listed as not requiring Owner’s written authorization, or requiring additional effort in an immediate, expeditious, or accelerated manner as a result of

Task Order.

unanticipated construction events or Specific Project conditions, are Additional Services, and will be compensated by the method indicated for Additional Services in this Task Order. All other Additional Services require mutual agreement.

4. DELIVERABLES SCHEDULE

- A. In submitting required Documents and taking other related actions, Engineer and Owner will comply with Appendix A to Task Order, attached to this specific Task Order.

5. ADDITIONS TO OWNER'S RESPONSIBILITIES

- A. Owner shall have the following supplemental responsibilities that are specific to this Task Order:

Provide CK Civil Engineering LLC any historical design information in the vicinity of the project; including but not limited to LSD submittals, Preliminary Plat Submittals, Environmental Reports, and any other information that may benefit the design of the project.

Provide CK Civil Engineering LLC with data from third party vendor for sewer flow and rainfall data across the sewer system.

6. TASK ORDER SCHEDULE

- A. In addition to any schedule provisions provided in Appendix A or elsewhere, the parties shall meet the following schedule: **Basic Services to be completed within 270 days of receipt of all flow monitoring and rain gauge data from the City.**

7. ENGINEER'S COMPENSATION ESTIMATIONS

- A. Owner shall pay Engineer for services rendered under this Task Order as follows:

Description of Service	Amount	Basis of Compensation
1. Basic Services		
a. Task 1 - Project Management	\$14,700.00	Lump Sum
b. Task 2 – Hydraulic Model	\$46,620.00	Lump Sum
c. Task 3 - Flow Monitoring	\$11,200.00	Lump Sum
d. Task 4 - Capacity Evaluation	\$60,220.00	Lump Sum
e. Task 5 - Capital Improvements Plan	\$31,520.00	Lump Sum
f. Task 6 - WWMP Report	\$30,120.00	As Needed
Reimbursables	\$1,500.00	As Needed

Task Order.

*Based on a [9]-month continuous analysis period.

B. Compensation items and totals based in whole or in part on Hourly Rates or Direct Labor are estimates only. Lump sum amounts and estimated totals included in the breakdown by phases incorporate Engineer's labor, overhead, profit, reimbursable expenses (if any), and Subconsultants' charges, if any. For lump sum items, Engineer may alter the distribution of compensation between individual phases (line items) to be consistent with services actually rendered, but shall not exceed the total lump sum compensation amount unless approved in writing by the Owner.

8. ENGINEER'S PRIMARY SUBCONSULTANTS FOR TASK ORDER, AS OF THE EFFECTIVE DATE OF THE TASK ORDER:

A. N/A – Flow Monitoring and Rain Gauge data to be coordinated by Tontitown Water Department and data given to CK Civil Engineering.

9. APPENDIX AND ATTACHMENTS:

A. Appendix A to Task Order—Engineer's Services Under Task Order

B. Appendix B to Task Order—Terms and Conditions

C. Appendix C to Task Order – Sewer System Map

Execution of this Task Order by Owner and Engineer makes it subject to the terms and conditions of the Main Agreement and its exhibits and appendices, which Main Agreement, exhibits, and appendices are incorporated by this reference.

OWNER:

ENGINEER:

By:

By:

Print Name: Angela Russell

Print Name: Zak Johnston

Title: Mayor

Title: Principal

Engineer's License or Firm's 4150
Certificate No. (if required):

State of: Arkansas

Task Order.

EJCDC® E-505, Agreement between Owner and Engineer for Professional Services—Task Order Edition.
Copyright® 2020 National Society of Professional Engineers, American Council of Engineering Companies,
and American Society of Civil Engineers. All rights reserved.

Task Order.

EJCDC® E-505, Agreement between Owner and Engineer for Professional Services—Task Order Edition.
Copyright© 2020 National Society of Professional Engineers, American Council of Engineering Companies,
and American Society of Civil Engineers. All rights reserved.

Page 5 of 5

Engineering Agreement
 Scope of Services and Fee Proposal
 Tontitown Master Sewer Plan
 Tontitown Waterworks; Tontitown, AR 72762
 December 22nd, 2025



CK Civil Engineering
 155 Fantinel DR
 Tontitown, AR 72762
ZakJ@ck-civil.com
 (501) 454-3038

Task Order 6

Task 1 - Project Management

Task	Engineer V	Engineer I	Technician III	Surveyor	Sur. Field Crew	Total Hours	Total Cost
Billing Rate (Effective thru Decmeber 31, 2026)	\$175.00	\$105.00	\$85.00	\$135.00	\$175.00		
1. Project Management and Administration							
a. Project administration includes management and coordination of project tasks, development and ongoing management of the project schedule, preparation of progress reports and invoices, oversight of quality control activities and the administrative tasks necessary for successful completion of the project.	60	40				100	\$ 14,700.00
Total Hours	60	40				100	
Total Cost - Task 1 Preliminary Engineering Services	\$ 10,500.00	\$ 4,200.00					\$ 14,700.00

Task 2 - Hydraulic Model

Task	Engineer V	Engineer I	Technician III	Surveyor	Survey Field Crew	Total Hours	Total Cost
Billing Rate (Effective thru Decmeber 31, 2026)	\$175.00	\$105.00	\$85.00	\$135.00	\$175.00		
1. Model Development							
a. Develop Sewer Hydraulic Model in InfoWorks ICM Sewer. Model to include all sanitary sewer 8" or larger, lift stations, and forcemains and will be up-to-date with the Tontitown GIS system. Model will be calibrated to both dry and wet weather conditions. Tontitown Waterworks will provide CK Civil as-built drawings and any needed field measurements of manhole depths or other necessary data staff of the existing wastewater system that will be modeled; otherwise, these locations will be modeled using industry assumptions.	120	160				280	\$ 37,800.00
b. CK Civil will conduct field testing up to twelve (6) lift stations anticipated to be modeled. CK Civil will provide up to two (2) staff for testing and TWU will provide at least one (1) staff to assist in efforts.	20	40				60	\$ 7,700.00
c. A workshop meeting will be held to gather input from Tontitown Water in relation to model development.	4	4				8	\$ 1,120.00
Total Hours	144	204				348	
Total Cost - Task 1 Preliminary Engineering Services	\$ 25,200.00	\$ 21,420.00					\$ 46,620.00

Task 3 - Flow Monitoring

Task	Engineer V	Engineer I	Technician III	Surveyor	Survey Field Crew	Total Hours	Total Cost
Billing Rate (Effective thru Decmeber 31, 2026)	\$175.00	\$105.00	\$85.00	\$135.00	\$175.00		
1. Data collection - Data to be collected by third party under direction of Tontitown Water in conjunction with CK Civil							
b. Meter and gauge data will be analyzed to quantify dry weather and wet weather flow and to calibrate the hydraulic models.	4	8				12	\$ 1,540.00
c. Update existing flows using geocoded water meters, current land use, winter billing data for the meters, and flow monitoring data.	4	12				16	\$ 1,960.00
d. Wastewater flow projections will be developed based on projections from the census data and flow monitoring data.	10	20				30	\$ 3,850.00
e. Determine I/I for each sewershed basin	10	20				30	\$ 3,850.00
Total Hours	28	60				88	
Total Cost - Task 1 Preliminary Engineering Services	\$ 4,900.00	\$ 6,300.00					\$ 11,200.00

Task 4 - Capacity Evaluation

Task	Engineer V	Engineer I	Technician III	Surveyor	Survey Field Crew	Total Hours	Total Cost
Billing Rate (Effective thru Decmeber 31, 2026)	\$175.00	\$105.00	\$85.00	\$135.00	\$175.00		
1. Capacity Evaluation							
a. The existing models developed in Task 2 will be calibrated based on lift station run time information and flow meter data for dry weather and up to two (2) wet weather events. The model will utilize dry and wet weather flows as determined from Task 3. Models will be created for existing and ultimate dry and wet weather conditions. If no wet weather events occur then:	60	100				160	\$ 21,000.00
i. The flow meters can remain in the system for a longer duration (subject to authorization of additional services); or							\$ -
ii. Wet weather system responses can be estimated based on previous modeling efforts and staff input of system response.							\$ -
b. In conjunction with the TWU, CK Civil will update design criteria, including the design storm, allowable system surcharging, minimum and maximum pipe velocities and line replacement/line parallel criteria.	20	40				60	\$ 7,700.00
c. Existing and ultimate capacity for 10-yr plan improvements will be evaluated using the calibrated models and existing/ultimate loading. In conjunction with the Tontitown Water, CK Civil will develop and evaluate up to three (3) potential collection system scenerios to serve ultimate flows in the system.	40	60				100	\$ 13,300.00
d. A projection analysis will be conducted to 2050 for long term trend planning	20	40				60	\$ 7,700.00
e. A new GIS mapping layer will be created for the Tontitown GIS system showcasing areas with capacity issues for Tontitown Planning efforts	20	40	20			80	\$ 9,400.00
f. A workshop meeting will be held to gather input from Tontitown Water in relation to model development.	4	4				8	\$ 1,120.00
Total Hours	164	284	20			468	
Total Cost - Task 1 Preliminary Engineering Services	\$ 28,700.00	\$ 29,820.00	\$ 1,700.00				\$ 60,220.00

Task 5 - Capital Improvements Plan

Task	Engineer V	Engineer I	Technician III	Surveyor	Survey Field Crew	Total Hours	Total Cost
Billing Rate (Effective thru Decmeber 31, 2026)	\$175.00	\$105.00	\$85.00	\$135.00	\$175.00		
1. CIP							
a. Based on results of the capacity evaluation, recommendations for increased sizing and/or new infrastructure will be developed and compiled into a 10-yr capital improvement plan.	60	120	20			200	\$ 24,800.00
b. Opinions of probable construction cost (OPCCs) will be developed for each improvement recommendation.	20	20				40	\$ 5,600.00
c. A workshop meeting will be held to gather input from Tontitown Water the help with priority ranking of improvements.	4	4				8	\$ 1,120.00
Total Hours	84	144	20			248	
Total Cost - Task 1 Preliminary Engineering Services	\$ 14,700.00	\$ 15,120.00	\$ 1,700.00				\$ 31,520.00

Task 6 - Report

Task	Engineer V	Engineer I	Technician III	Surveyor	Survey Field Crew	Total Hours	Total Cost
Billing Rate (Effective thru Decmeber 31, 2026)	\$175.00	\$105.00	\$85.00	\$135.00	\$175.00		
1. Final Report							
a. A draft report will be prepared that summarizes the data collected, methodology, results and recommendations. An electronic copy will be provided for City review.	60	80	20			160	\$ 20,600.00
b. A final report will be prepared that addresses City comments. Five (5) printed copies and one electronic copy (pdf) will be submitted to the City.	24	40				64	\$ 8,400.00
c. A workshop meeting will be held to present the results	4	4				8	\$ 1,120.00
Total Hours	88	124	20			232	
Total Cost - Task 1 Preliminary Engineering Services	\$ 15,400.00	\$ 13,020.00	\$ 1,700.00				\$ 30,120.00

ENGINEERING SERVICES SUMMARY

Task 1 - Project Management	\$ 14,700.00
Task 2 - Hydraulic Model	\$ 46,620.00
Task 3 - Flow Monitoring	\$ 11,200.00
Task 4 - Capacity Evaluation	\$ 60,220.00
Task 5 - Capital Improvements Plan	\$ 31,520.00
Task 6 - Report	\$ 30,120.00
Reimbursables (estimated)	\$ 1,500.00
Total	\$ 195,880.00

ENGINEERING SPECIAL SERVICES

Special Services are tasks not included in the above-described Basic Service and are to be performed by CK Civil only is authorized by the Client in writing as an amendment to this agreement. These services would be for an additional agreed-upon fee via amendment to this scope of services. These services could include, but are not limited to:

- 1) Assistance with on-site data collection or field services, not defined in Basic Services
- 2) Additional modeling and analysis to include conditions that are not listed in Basic Services
- 3) Water system modeling and/or analysis
- 4) Any condition assessment, beyond those listed in Basic Services
- 5) Preliminary or detailed design of recommended improvements listed in the project report
- 6) Legal support
- 7) Field Surveying, i.e. measuring flowlines or sump depths

APPENDIX B — Terms and Conditions

1. **Authorization to Proceed:** Signing this document authorizes CKCE to begin work as outlined. This document constitutes the entire agreement.
2. **Termination:** Either the Owner or the Engineer may terminate the agreement by giving 15 business days of written notice to the other party. In such case, the Owner shall forthwith pay the Engineer in full for all work previously authorized and performed plus all expenses incurred prior to the effective date of termination. The Engineer reserves the right to suspend services if invoiced fees are not remitted within 30 days of the invoice date. Otherwise, any obligations and relationships created by this Agreement terminate upon completion of all applicable requirements of this Agreement.
3. **Consultants:** The Engineer may retain consultants qualified for the work of this project when deemed necessary but shall not engage a consultant to whom the Owner has a reasonable objection.
4. **Legal Requirements:** "Legal Requirements" means all applicable federal, state, and local laws, codes, ordinances, rules, regulations, orders, and decrees of any governmental or quasi-governmental entity having jurisdiction over the Project, the practices involved in the Project, and the Services. The laws of the State of Arkansas shall govern this project.
5. **Hazardous Materials:** "Hazardous Materials" means any material, waste, substance, or chemical deemed hazardous under applicable legal requirements or regulated for handling, storage, remediation, or disposal. The Engineer and its consultants do not have, and cannot reasonably obtain, insurance for claims arising from professional services related to hazardous materials, including asbestos and other pollutants. The Owner agrees not to bring claims against the Engineer or its consultants, except for negligence, for services related to the investigation or remediation of hazardous substances. The Owner shall indemnify and hold harmless the Engineer, its consultants, agents, and employees from any claims, damages, losses, and expenses, including attorney fees, arising from work involving hazardous materials, provided such materials pose a risk of bodily injury or death and have not been rendered harmless. This indemnity does not apply if the damage, loss, or expense is due to the fault or negligence of the indemnified party. If the Engineer encounters hazardous materials, they will immediately inform the Owner.
6. **Ownership of Documents:** All models, photographs, plans, drawings, specifications, and other documents prepared by the Engineer or its consultants pursuant to this Agreement are instruments of professional service ("Instruments of Service"). The Engineer hereby grants to the Owner and its successors in interest to the Project an irrevocable license to utilize the plans, drawings, and specifications with respect to the construction, maintenance, repair, alteration, expansion, modification, and reconstruction of the Project. The Engineer shall retain ownership of all electronic Instruments of Service. The Engineer shall retain all common law, statutory, or other reserved rights therein and shall have the right to retain reproducible copies of the Instruments of Service and to reuse information and design concepts contained in them in the normal course of the Engineer's business. Should the Engineer or the Owner utilize the Instruments of Service on another project, the party utilizing the Instruments of Service shall indemnify, defend, and hold harmless the other from any and all liability, claims, suits, or demands associated with, resulting, or emanating from or related to the use thereof.
7. **Payments:** Invoices will be rendered at the completion of each service. Cancellation of the project after the start of services will be billed hourly not to exceed the overall established fee. Invoices past 60 days due will be subject to a monthly service charge of 1.5% which will be assessed in compliance with Arkansas usury laws. Should the account be placed for collection with an outside collector, the cost of such collections will be added to the principal amount owing. Reimbursable expenses such as travel expenses, printing, shipping, plan review & permitting fees, and other expenses directly attributed to the projects will be billed at direct cost without markup. Any other expenses incurred by CKCE on behalf of the Owner will be billed at actual cost.
8. **Indemnification:** a. The Owner shall indemnify and hold harmless the Engineer and the Engineer's

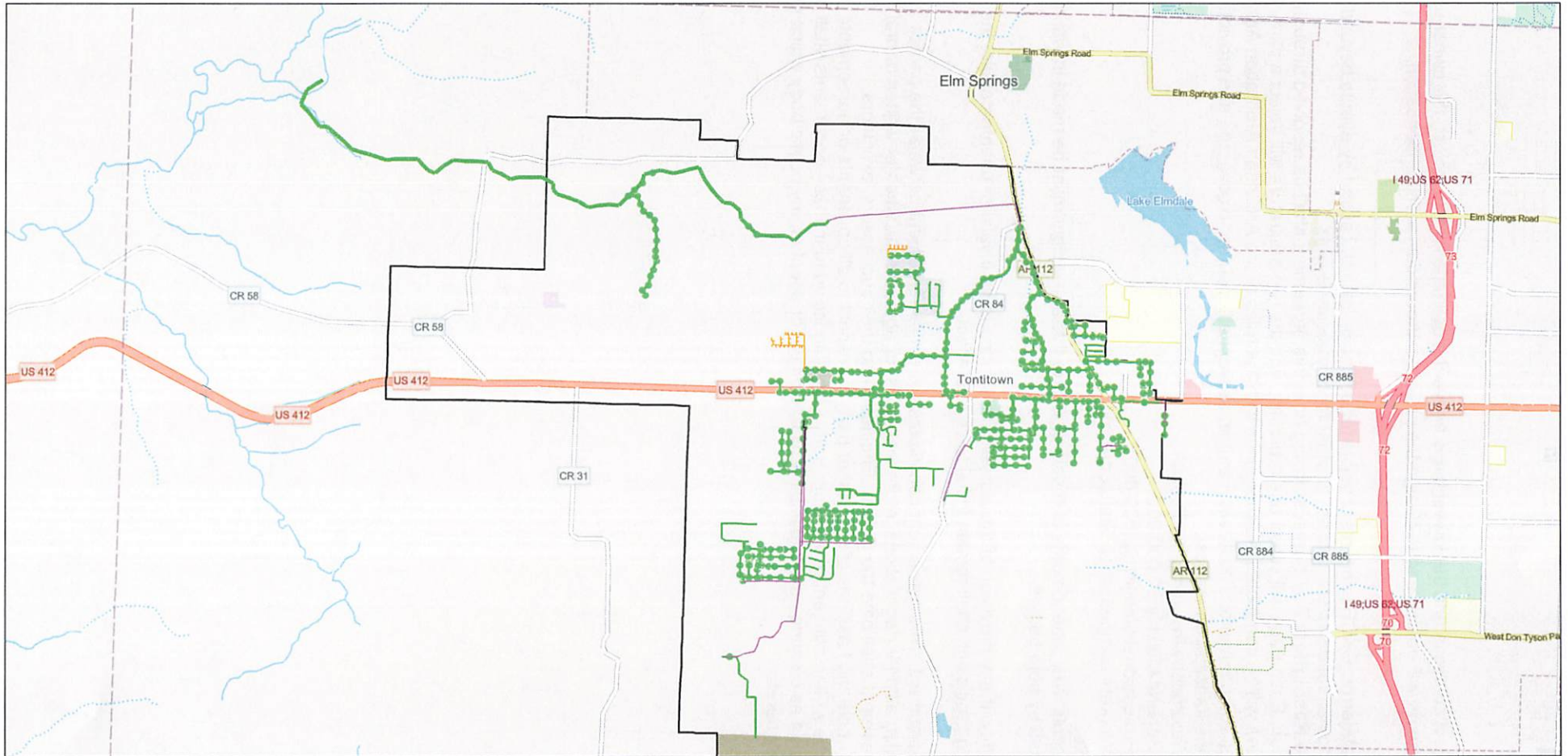
owners, officers, and employees from and against damages, losses, liabilities, judgments, and reasonable and actual defense-related costs (including court costs and fees and expenses of attorneys, accountants, experts, and investigators) arising from or related to claims by third parties to the extent they are caused by the negligent acts or omissions or willful misconduct of the Owner or its employees. b. The Engineer shall indemnify and hold harmless the Owner and the Owner's officers and employees from and against damages, losses, liabilities, judgments, and reasonable and actual defense-related costs (including court costs and fees and expenses of attorneys, accountants, experts, and investigators) arising from or related to claims by third parties to the extent they are caused by the negligent acts or omissions or willful misconduct of the Engineer or its employees.

9. **Certifications:** Engineer and/or Engineer's consultants shall not be required to sign any documents, no matter by whom requested, that would result in Engineer and/or Engineer's consultants having to certify, guarantee, or warrant the existence of conditions whose existence Engineer and/or Engineer's consultants cannot ascertain. Owner also agrees not to make the resolution of any dispute with Engineer and/or Engineer's consultants or payment of any amount due to Engineer in any way contingent upon Engineer and/or Engineer's consultants signing any such certification.
10. **Jobsite Safety:** Neither the professional activities of Engineer or Engineer's consultants, nor the presence of Engineer, Engineer's consultants, or their respective employees and sub-consultants at a construction site, shall relieve the Contractor and any other entity of their obligations, duties, and responsibilities, including but not limited to construction means, methods, sequence, techniques, or procedures necessary for performing, superintending, or coordinating all portions of the Work in accordance with the Contract Documents and any health or safety precautions required by any applicable laws or regulations. Engineer and/or Engineer's consultants and their respective employees and sub-consultants have no authority to exercise any control over any construction contractor or other entity or their employees in connection with their work or any health or safety precautions. Owner agrees that the Contractor is solely responsible for jobsite safety and warrants that this intent shall be made evident in Owner's agreement with the Contractor.
11. **Limitation of Liability:** In recognition of the relative risks and benefits of the Project to both Owner and Professional, the risks have been allocated such that the Owner agrees to the fullest extent permitted by law to limit the liability of Engineer and Engineer's consultants and to all construction contractors and subcontractors on the Project for any and all claims, losses, costs, damages of any nature whatsoever, or claims expenses from any cause or causes so that the total aggregate liability of Engineer and Engineer's consultants to all those named shall not exceed the limits of the contract. Such claims and causes include but are not limited to negligence, professional errors or omissions, strict liability, breach of contract, or warranty.
12. **Betterment:** If due to Engineer's and/or Engineer's consultant's error, any required construction item or component of the Project is omitted from Engineer's and/or Engineer's consultant's construction documents, Engineer and/or Engineer's consultants shall not be responsible for paying the cost to add such item or component to the extent that such item or component would have been otherwise necessary to the Project or otherwise adds value or betterment to the Project. In no event will Engineer and/or Engineer's consultants be responsible for any cost or expense that provides betterment, upgrade, or enhancement of the Project.
13. **Unforeseen Conditions:** Engineer shall not be responsible for unforeseen field conditions or any existing conditions concealed by the existing finishes that cannot be investigated by reasonable non-destructive visual observation.
14. **Estimates:** All estimates provided by the Engineer, including but not limited to quantities, costs, and schedules, are based on experience, industry practices, and software calculations. These estimates are provided for informational purposes only and are subject to change due to market conditions, actual field conditions, and other factors beyond the Engineer's control. The Professional does not guarantee the accuracy of these estimates and assumes no liability for any discrepancies or variances that may arise. The Owner acknowledges and agrees that the Professional shall not be held responsible for any costs, expenses, or losses incurred due to reliance on these estimates. If

the project comes in and the lowest bid is above the estimate for the project, the owner understands the Engineer will not have to re-design the project without additional compensation.

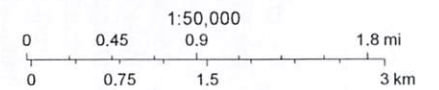
15. **Force Majeure:** CKCE is not responsible for delays or failures caused by events beyond its control, including natural disasters, strikes, or other force majeure events.
16. **Dispute Resolution:** Any disputes arising from this agreement shall be resolved through binding arbitration. Each party will select one arbitrator, and the two arbitrators will select a third. The arbitration will be conducted in accordance with the rules of the American Arbitration Association.
17. **Insurance Requirements:** CKCE will maintain appropriate insurance coverage and provide proof of insurance upon request.
 - a. Automobile Insurance \$500,000
 - b. General Liability \$1,000,000
 - c. Professional Liability \$2,000,000
 - d. Workers compensation Statutory Limit
18. **Amendments:** Any amendments or modifications to this agreement must be made in writing and signed by both parties.
19. **Severability:** If any provision of this agreement is found to be invalid or unenforceable, the remaining provisions shall remain in full force and effect.
20. **Entire Agreement:** This agreement constitutes the entire agreement between the parties and supersedes all prior negotiations, representations, or agreements, whether written or oral. This agreement shall bind the Owner, Engineer, and their successors, executors, administrators, and assigns of such other party in respect to all covenants or agreements without the written consent of the other party. Nothing included in these documents shall be constructed as creating personal liability by any officer or agent to any public body which may be a party hereto.

ArcGIS Web Map



12/18/2025, 4:58:38 PM

- Sanitary Forcemain Abandoned
- Sanitary Forcemain
- Low Pressure Sewer
- Sewer - 18"
- Sewer - 15"
- Sewer - 12"
- Sewer - 8"
- Sanitary Manholes
- City Boundary



Map data © OpenStreetMap contributors, Microsoft, Facebook, Google, Esri Community Maps contributors, Map layer by Esri