

RESOLUTION NO. 2022-09-1006R

CITY OF TONTITOWN, WASHINGTON COUNTY, ARKANSAS

A RESOLUTION APPROVING AN AMENDED TONTITOWN BIKE/PEDESTRIAN COMMUNITY PLAN FOR THE CITY OF TONTITOWN, ARKANSAS.

WHEREAS, the Tontitown Bike/Pedestrian Community Plan was adopted by the Tontitown City Council in 2015 and incorporated into the Master Transportation Plan in 2018 by and through Resolution No. 2018-11-815R in order to achieve a better bicycle and pedestrian network in the City of Tontitown; and

WHEREAS, the City Council has received a recommendation from the Planning Commission, attached hereto as Exhibit "A", to amend the Tontitown Bike/Pedestrian Community Plan in order to efficiently accommodate the citizens and of Tontitown; and

WHEREAS, the City Council has reviewed the proposed amendment and has determined that it is in the best interest of the citizens of Tontitown to approve the amendment to the Tontitown Bike/Pedestrian Community Plan.

NOW, THEREFORE, BE IT RESOLVED, by the City Council of the City of Tontitown, Arkansas:

Section 1. That the amendment to the Tontitown Bike/Pedestrian Community Plan, attached hereto as Exhibit "A", are hereby approved by City Council of the City of Tontitown.


Section 2. The remainder of the Master Transportation Plan not specifically revised herein, and described in the attached Exhibit "A", shall hereby remain in full force and effect.

PASSED AND APPROVED this 6 day of September 2022.

APPROVED:


Angela Russell, Mayor

ATTEST:


Rhonda Ardemagni, City Clerk-Treasurer


Doc ID: 020775040007 Type: REL
Kind: ORDINANCE
Recorded: 10/06/2022 at 11:52:28 AM
Fee Amt: \$45.00 Page 1 of 7
Washington County, AR
Kyle Sylvester Circuit Clerk
File **2022-00032897**



EXHIBIT

A

TONTITOWN WALK/BIKE ACTION PLAN

OVERVIEW

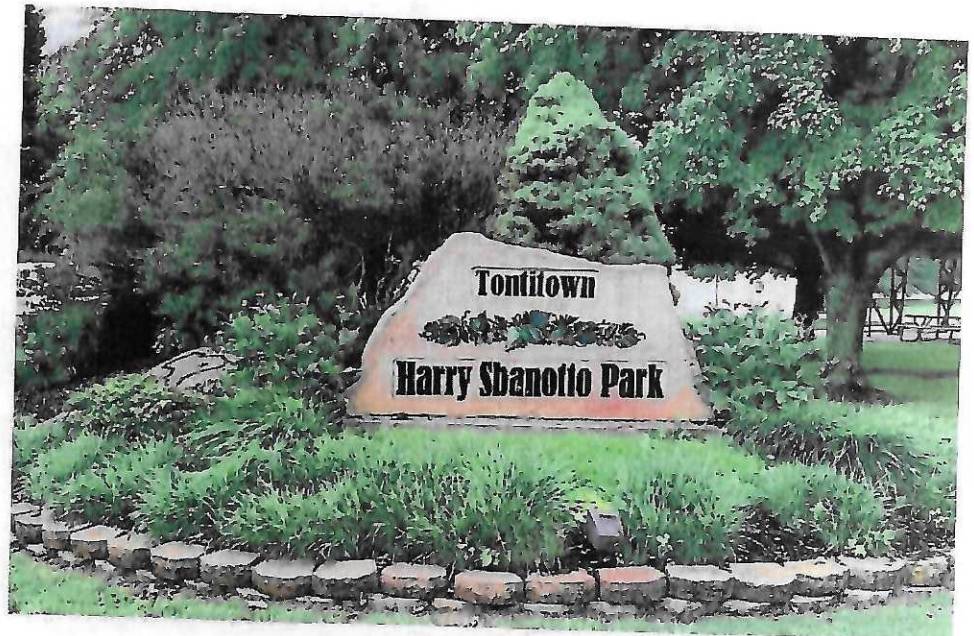
Tontitown is a quickly growing rural/suburban community that has a population of 4,301~~2,548~~ and covers 18.1 square miles in Washington County near the urban corridor. Tontitown, founded by a group of Italian immigrants in the late 19th century, contains a unique cluster of vineyards with a grape festival held every year in the town center. Key opportunities include thoroughly connecting the downtown center of Tontitown, Sbanotto Park, residential areas, Har-Ber Avenue, scenic rural routes (and vineyards), and surrounding communities. Providing safe crossings of US 412 is a key challenge for Tontitown.

Regional Destinations

- » Downtown center

Other Key Destinations

- » Residential and commercial areas
- » Sbanotto Park
- » ~~Potential future park site~~
- » Har-Ber Avenue (toward Springdale Har-Ber High School)
- » Local elementary school





WALK BIKE NORTHWEST ARKANSAS



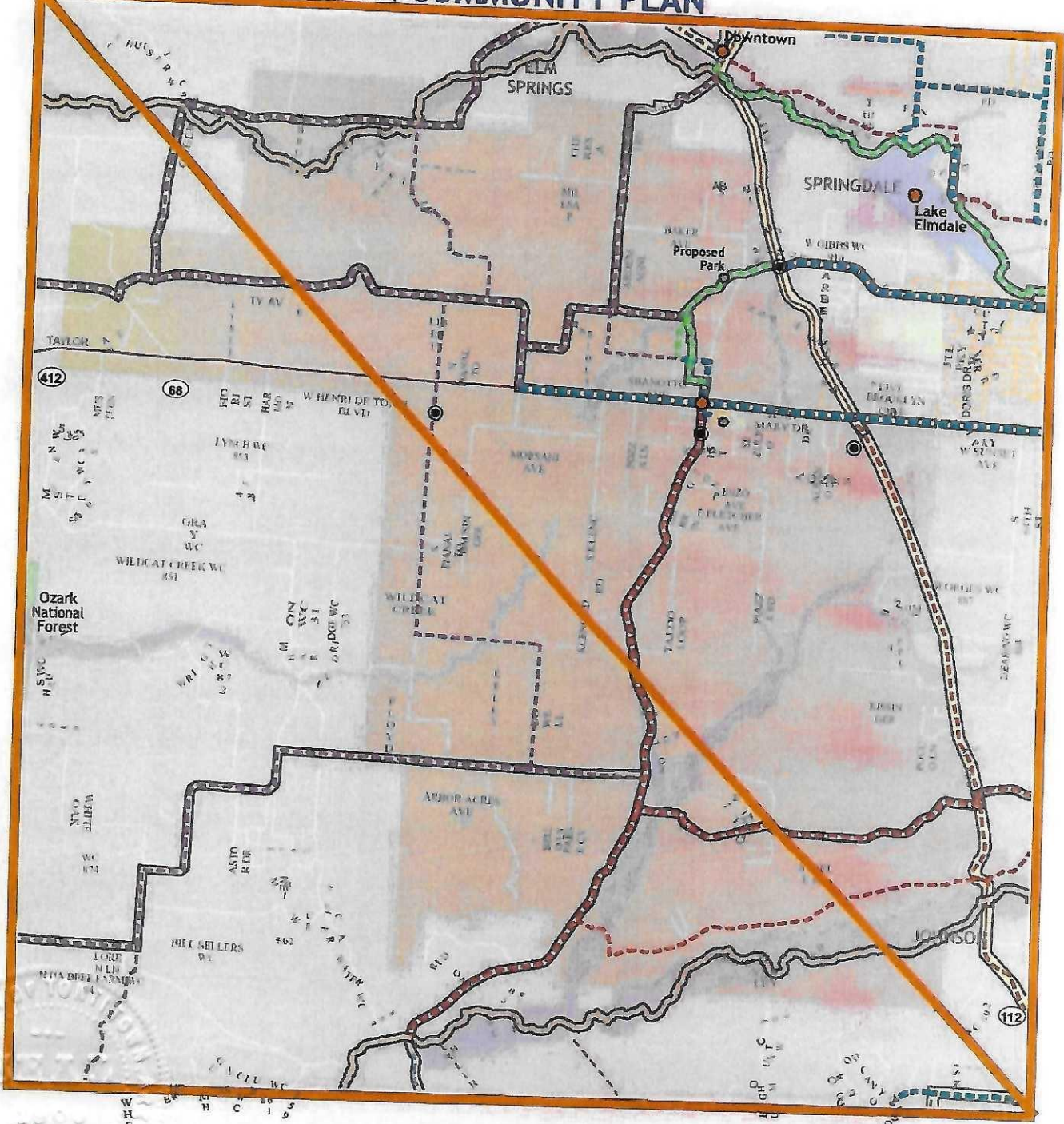
Clockwise from upper left: Park/Trail opportunities through Belmont Way; Sbanotto Park; Scenic and low traffic volume corridors (Dowell Road) Trail along Barrington Road, Sbanotto Park, potential trail connection along Fletcher Ave. to connect to Hwy. 112. Photos by Garver.

REGIONAL LOCATION MAP





MAP 6.24 TONTITOWN COMMUNITY PLAN



- Razorback Greenway
- Regional Network
- Heritage Trail
- Regional Destination
- Local Destination
- School

Shared Use Facilities

- Proposed Shared Use Paved Trail
- Existing Shared Use Paved Trail
- Proposed Sidepath
- Existing Sidepath
- Proposed Natural Surface Trail
- Existing Natural Surface Trail
- Crossing Improvement

Bicycle Facilities

- Proposed Separated Bikeway
- Existing Separated Bikeway
- Existing Shared Roadway
- Proposed Shared Roadway
- Gravel Grinding Route

- Proposed Shoulder Improvement
- Existing Shoulder

Pedestrian Facilities

- Proposed Sidewalk
- Existing Sidewalk
- Neighborhood/Park Trails

0 0.5 Miles





Key Needs & Recommendations for Tontitown

Topic	Key Needs & Notes
Regional Needs	» Provide links through the downtown area. Connect to surrounding communities and identify opportunities to connect to Lake Wedington, and to the Razorback Greenway.
Other Key Needs	» Provide links to Sbanotto Park (Sbanotto Park - also identify opportunities for potential park site). » Improve neighborhood connectivity. » Improve Har-Ber Avenue connectivity. » Provide safe crossings of US 412. » <u>Provide links to elementary school</u> » <u>Provide connections to key commercial areas</u>

Facility Recommendation	Recommendation Detail
<u>Sidewalks and Trails</u>	» Residential Areas: Continue developing sidewalks <u>and trails</u> with new residential <u>and commercial</u> development.
<u>Intersections</u>	» AR 412 Crossings: Crossing improvements needed along AR 412 at the Barrington Road, <u>Klenc Road</u> , <u>Pianalto Road</u> , and and AR 112 intersections. Other intersection the network develops.
<u>On-Street Bike Facilities</u>	» Shoulder Improvements: Add paved shoulder along AR 112 and <u>the southern section of</u> Barrington Road, <u>Reed Valley</u> , and <u>Steele Road</u> to provide a safer space for cyclists and cars. » Shared Roadways: <u>the western portion of Liberty Avenue, Ardemagni Road, Sbanotto Avenue, Javello Road, -Brush Creek Road, North and South Pianalto Road, Martine Road, Parich Street, Kelly Ave, Steele Road, and Reed Valley Road</u> provide lower traffic links in and through Tontitown.
<u>Shared Use Facilities</u>	» Shared Use Paved Trail - Town center to Har-Ber Avenue <u>along Barrington Road</u> : Develop shared use paved trail connecting the town center of Tontitown to Har-Ber Avenue (linking toward Har-Ber Avenue Springdale High School). » Sidepath - US 412: Develop sidepath along US 412, <u>AR Hwy. 112, Fletcher Ave, and the eastern portion of Liberty Ave.</u> linking the town center with business clusters and residential areas toward Springdale.

Other Topics	Notes
<u>Multi-Modal Connections</u>	» Tontitown is not directly connected by public transit. Ozark Regional Transit serves the urban NWA corridor.
<u>Heritage Trail</u>	» The NWA Heritage Trail connects north/south through Tontitown along AR 112 toward Elm Springs and Johnson/Fayetteville.



Program & Policy Recommendations

The table below presents a summary of recommendations organized by category which identifies the recommended program, time-frame for implementation, and lead entity. The table identifies Bronze (short-term), Silver (mid-term) and Gold (long-term) actions that can help achieve recognition as a Walk and Bicycle Friendly Community.

For many of these actions, there is an opportunity for the communities of the region to share resources, with individual communities participating in regional programs, attending trainings or meetings convened at the regional scale, or implementing regionally developed programs at the local level. Recommendations specific to the Six E's (Engineering, Education, Encouragement, Enforcement, and Evaluation (with Equity considered broadly through all)) are found below. Economy is included as an additional category to help demonstrate the benefits of implementing all of the E's. Refer to Appendix D for detailed guidance on implementing each item, including a description of recommended actions, regional and local roles, as well as sample programs.

Program	Term	Lead Entity
Engineering		
Complete Streets Policy	Medium Short	City of Tontitown
Non-Motorized Transportation Training for Engineers and Planners	Short	NWARPC, City of Tontitown
Bicycle Parking	Medium	NWARPC, Northwest Arkansas Council, City of Tontitown
Enhanced Funding for Bike and Pedestrian Projects	Medium	NWARPC, City of Tontitown
Bike/Pedestrian Facility Inclusion in Engineering Documents, Plans, and Drawings	Short	NWARPC, City of Tontitown
Education		
Network with existing capacity in NWA	Medium	City of Tontitown, City of Fayetteville, City of Bentonville, City of Rogers, City of Springdale, Bike Bentonville, BCO, IMBA
Encouragement		
Walking and Biking Promotion Activities	Short	City of Tontitown
Equity Oriented Programs	Short	NWARPC, Northwest Arkansas Council, City of Tontitown
Bike and Walk Month	Medium	City of Tontitown
Group Rides and Walks	Medium	City of Tontitown
Enforcement		
Targeted Bicycle and Pedestrian Enforcement	Short	City of Tontitown Law Enforcement
Trainings for Law Enforcement Officers	Short	NWARPC, City of Tontitown Law Enforcement
Bike and Foot Patrol Units	Medium	City of Tontitown Law Enforcement
Annual Meeting with Police, Planners and Engineers to Evaluate Collision Trends, Infrastructure Needs and Areas for Targeted Enforcement	Medium	NWARPC, City of Tontitown
Evaluation		
Active Transportation Committee	Short	NWARPC, City of Tontitown
Bicycle, Pedestrian, and Trail Count Program	Short	City of Tontitown
Walking, Bicycling and Trails Report Card	Medium	City of Tontitown
Economy		
Bicycle and Walking Tourism Strategy	Medium	Northwest Arkansas Council, City of Tontitown



1. The first part of the report is a general introduction to the project. It describes the purpose of the study, the objectives, and the scope of the work. It also provides a brief overview of the methodology used in the study.

2. The second part of the report is a detailed description of the methodology used in the study. It includes a description of the data sources, the data collection methods, and the data analysis methods.

3. The third part of the report is a detailed description of the results of the study. It includes a description of the data, the results of the data analysis, and the conclusions drawn from the results.

4. The fourth part of the report is a discussion of the results of the study. It discusses the implications of the results, the limitations of the study, and the need for further research.

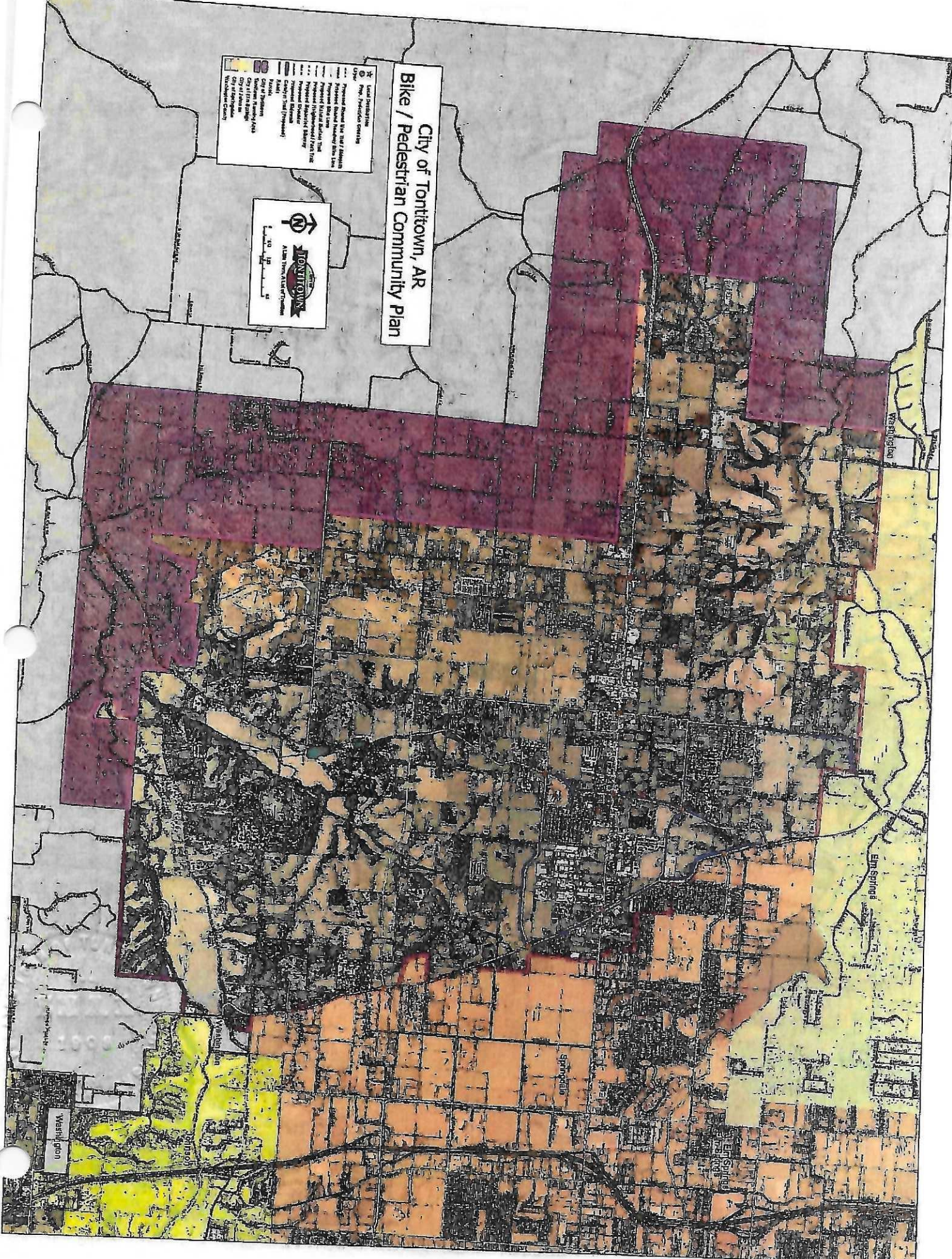
5. The fifth part of the report is a conclusion. It summarizes the findings of the study and provides a final statement on the importance of the research.

Table 1: Summary of Data Sources	
Source	Description
Source 1	Source 1 Description
Source 2	Source 2 Description
Source 3	Source 3 Description
Source 4	Source 4 Description
Source 5	Source 5 Description
Source 6	Source 6 Description
Source 7	Source 7 Description
Source 8	Source 8 Description
Source 9	Source 9 Description
Source 10	Source 10 Description
Source 11	Source 11 Description
Source 12	Source 12 Description
Source 13	Source 13 Description
Source 14	Source 14 Description
Source 15	Source 15 Description
Source 16	Source 16 Description
Source 17	Source 17 Description
Source 18	Source 18 Description
Source 19	Source 19 Description
Source 20	Source 20 Description
Source 21	Source 21 Description
Source 22	Source 22 Description
Source 23	Source 23 Description
Source 24	Source 24 Description
Source 25	Source 25 Description
Source 26	Source 26 Description
Source 27	Source 27 Description
Source 28	Source 28 Description
Source 29	Source 29 Description
Source 30	Source 30 Description
Source 31	Source 31 Description
Source 32	Source 32 Description
Source 33	Source 33 Description
Source 34	Source 34 Description
Source 35	Source 35 Description
Source 36	Source 36 Description
Source 37	Source 37 Description
Source 38	Source 38 Description
Source 39	Source 39 Description
Source 40	Source 40 Description
Source 41	Source 41 Description
Source 42	Source 42 Description
Source 43	Source 43 Description
Source 44	Source 44 Description
Source 45	Source 45 Description
Source 46	Source 46 Description
Source 47	Source 47 Description
Source 48	Source 48 Description
Source 49	Source 49 Description
Source 50	Source 50 Description
Source 51	Source 51 Description
Source 52	Source 52 Description
Source 53	Source 53 Description
Source 54	Source 54 Description
Source 55	Source 55 Description
Source 56	Source 56 Description
Source 57	Source 57 Description
Source 58	Source 58 Description
Source 59	Source 59 Description
Source 60	Source 60 Description
Source 61	Source 61 Description
Source 62	Source 62 Description
Source 63	Source 63 Description
Source 64	Source 64 Description
Source 65	Source 65 Description
Source 66	Source 66 Description
Source 67	Source 67 Description
Source 68	Source 68 Description
Source 69	Source 69 Description
Source 70	Source 70 Description
Source 71	Source 71 Description
Source 72	Source 72 Description
Source 73	Source 73 Description
Source 74	Source 74 Description
Source 75	Source 75 Description
Source 76	Source 76 Description
Source 77	Source 77 Description
Source 78	Source 78 Description
Source 79	Source 79 Description
Source 80	Source 80 Description
Source 81	Source 81 Description
Source 82	Source 82 Description
Source 83	Source 83 Description
Source 84	Source 84 Description
Source 85	Source 85 Description
Source 86	Source 86 Description
Source 87	Source 87 Description
Source 88	Source 88 Description
Source 89	Source 89 Description
Source 90	Source 90 Description
Source 91	Source 91 Description
Source 92	Source 92 Description
Source 93	Source 93 Description
Source 94	Source 94 Description
Source 95	Source 95 Description
Source 96	Source 96 Description
Source 97	Source 97 Description
Source 98	Source 98 Description
Source 99	Source 99 Description
Source 100	Source 100 Description



City of Tontitown, AR Bike / Pedestrian Community Plan

- Land Use Designation
- Proposed Bypass for 101 / 102 / 103 / 104 / 105 / 106 / 107 / 108 / 109 / 110 / 111 / 112 / 113 / 114 / 115 / 116 / 117 / 118 / 119 / 120 / 121 / 122 / 123 / 124 / 125 / 126 / 127 / 128 / 129 / 130 / 131 / 132 / 133 / 134 / 135 / 136 / 137 / 138 / 139 / 140 / 141 / 142 / 143 / 144 / 145 / 146 / 147 / 148 / 149 / 150 / 151 / 152 / 153 / 154 / 155 / 156 / 157 / 158 / 159 / 160 / 161 / 162 / 163 / 164 / 165 / 166 / 167 / 168 / 169 / 170 / 171 / 172 / 173 / 174 / 175 / 176 / 177 / 178 / 179 / 180 / 181 / 182 / 183 / 184 / 185 / 186 / 187 / 188 / 189 / 190 / 191 / 192 / 193 / 194 / 195 / 196 / 197 / 198 / 199 / 200 / 201 / 202 / 203 / 204 / 205 / 206 / 207 / 208 / 209 / 210 / 211 / 212 / 213 / 214 / 215 / 216 / 217 / 218 / 219 / 220 / 221 / 222 / 223 / 224 / 225 / 226 / 227 / 228 / 229 / 230 / 231 / 232 / 233 / 234 / 235 / 236 / 237 / 238 / 239 / 240 / 241 / 242 / 243 / 244 / 245 / 246 / 247 / 248 / 249 / 250 / 251 / 252 / 253 / 254 / 255 / 256 / 257 / 258 / 259 / 260 / 261 / 262 / 263 / 264 / 265 / 266 / 267 / 268 / 269 / 270 / 271 / 272 / 273 / 274 / 275 / 276 / 277 / 278 / 279 / 280 / 281 / 282 / 283 / 284 / 285 / 286 / 287 / 288 / 289 / 290 / 291 / 292 / 293 / 294 / 295 / 296 / 297 / 298 / 299 / 300 / 301 / 302 / 303 / 304 / 305 / 306 / 307 / 308 / 309 / 310 / 311 / 312 / 313 / 314 / 315 / 316 / 317 / 318 / 319 / 320 / 321 / 322 / 323 / 324 / 325 / 326 / 327 / 328 / 329 / 330 / 331 / 332 / 333 / 334 / 335 / 336 / 337 / 338 / 339 / 340 / 341 / 342 / 343 / 344 / 345 / 346 / 347 / 348 / 349 / 350 / 351 / 352 / 353 / 354 / 355 / 356 / 357 / 358 / 359 / 360 / 361 / 362 / 363 / 364 / 365 / 366 / 367 / 368 / 369 / 370 / 371 / 372 / 373 / 374 / 375 / 376 / 377 / 378 / 379 / 380 / 381 / 382 / 383 / 384 / 385 / 386 / 387 / 388 / 389 / 390 / 391 / 392 / 393 / 394 / 395 / 396 / 397 / 398 / 399 / 400 / 401 / 402 / 403 / 404 / 405 / 406 / 407 / 408 / 409 / 410 / 411 / 412 / 413 / 414 / 415 / 416 / 417 / 418 / 419 / 420 / 421 / 422 / 423 / 424 / 425 / 426 / 427 / 428 / 429 / 430 / 431 / 432 / 433 / 434 / 435 / 436 / 437 / 438 / 439 / 440 / 441 / 442 / 443 / 444 / 445 / 446 / 447 / 448 / 449 / 450 / 451 / 452 / 453 / 454 / 455 / 456 / 457 / 458 / 459 / 460 / 461 / 462 / 463 / 464 / 465 / 466 / 467 / 468 / 469 / 470 / 471 / 472 / 473 / 474 / 475 / 476 / 477 / 478 / 479 / 480 / 481 / 482 / 483 / 484 / 485 / 486 / 487 / 488 / 489 / 490 / 491 / 492 / 493 / 494 / 495 / 496 / 497 / 498 / 499 / 500 / 501 / 502 / 503 / 504 / 505 / 506 / 507 / 508 / 509 / 510 / 511 / 512 / 513 / 514 / 515 / 516 / 517 / 518 / 519 / 520 / 521 / 522 / 523 / 524 / 525 / 526 / 527 / 528 / 529 / 530 / 531 / 532 / 533 / 534 / 535 / 536 / 537 / 538 / 539 / 540 / 541 / 542 / 543 / 544 / 545 / 546 / 547 / 548 / 549 / 550 / 551 / 552 / 553 / 554 / 555 / 556 / 557 / 558 / 559 / 560 / 561 / 562 / 563 / 564 / 565 / 566 / 567 / 568 / 569 / 570 / 571 / 572 / 573 / 574 / 575 / 576 / 577 / 578 / 579 / 580 / 581 / 582 / 583 / 584 / 585 / 586 / 587 / 588 / 589 / 590 / 591 / 592 / 593 / 594 / 595 / 596 / 597 / 598 / 599 / 600 / 601 / 602 / 603 / 604 / 605 / 606 / 607 / 608 / 609 / 610 / 611 / 612 / 613 / 614 / 615 / 616 / 617 / 618 / 619 / 620 / 621 / 622 / 623 / 624 / 625 / 626 / 627 / 628 / 629 / 630 / 631 / 632 / 633 / 634 / 635 / 636 / 637 / 638 / 639 / 640 / 641 / 642 / 643 / 644 / 645 / 646 / 647 / 648 / 649 / 650 / 651 / 652 / 653 / 654 / 655 / 656 / 657 / 658 / 659 / 660 / 661 / 662 / 663 / 664 / 665 / 666 / 667 / 668 / 669 / 670 / 671 / 672 / 673 / 674 / 675 / 676 / 677 / 678 / 679 / 680 / 681 / 682 / 683 / 684 / 685 / 686 / 687 / 688 / 689 / 690 / 691 / 692 / 693 / 694 / 695 / 696 / 697 / 698 / 699 / 700 / 701 / 702 / 703 / 704 / 705 / 706 / 707 / 708 / 709 / 710 / 711 / 712 / 713 / 714 / 715 / 716 / 717 / 718 / 719 / 720 / 721 / 722 / 723 / 724 / 725 / 726 / 727 / 728 / 729 / 730 / 731 / 732 / 733 / 734 / 735 / 736 / 737 / 738 / 739 / 740 / 741 / 742 / 743 / 744 / 745 / 746 / 747 / 748 / 749 / 750 / 751 / 752 / 753 / 754 / 755 / 756 / 757 / 758 / 759 / 760 / 761 / 762 / 763 / 764 / 765 / 766 / 767 / 768 / 769 / 770 / 771 / 772 / 773 / 774 / 775 / 776 / 777 / 778 / 779 / 780 / 781 / 782 / 783 / 784 / 785 / 786 / 787 / 788 / 789 / 790 / 791 / 792 / 793 / 794 / 795 / 796 / 797 / 798 / 799 / 800 / 801 / 802 / 803 / 804 / 805 / 806 / 807 / 808 / 809 / 810 / 811 / 812 / 813 / 814 / 815 / 816 / 817 / 818 / 819 / 820 / 821 / 822 / 823 / 824 / 825 / 826 / 827 / 828 / 829 / 830 / 831 / 832 / 833 / 834 / 835 / 836 / 837 / 838 / 839 / 840 / 841 / 842 / 843 / 844 / 845 / 846 / 847 / 848 / 849 / 850 / 851 / 852 / 853 / 854 / 855 / 856 / 857 / 858 / 859 / 860 / 861 / 862 / 863 / 864 / 865 / 866 / 867 / 868 / 869 / 870 / 871 / 872 / 873 / 874 / 875 / 876 / 877 / 878 / 879 / 880 / 881 / 882 / 883 / 884 / 885 / 886 / 887 / 888 / 889 / 890 / 891 / 892 / 893 / 894 / 895 / 896 / 897 / 898 / 899 / 900 / 901 / 902 / 903 / 904 / 905 / 906 / 907 / 908 / 909 / 910 / 911 / 912 / 913 / 914 / 915 / 916 / 917 / 918 / 919 / 920 / 921 / 922 / 923 / 924 / 925 / 926 / 927 / 928 / 929 / 930 / 931 / 932 / 933 / 934 / 935 / 936 / 937 / 938 / 939 / 940 / 941 / 942 / 943 / 944 / 945 / 946 / 947 / 948 / 949 / 950 / 951 / 952 / 953 / 954 / 955 / 956 / 957 / 958 / 959 / 960 / 961 / 962 / 963 / 964 / 965 / 966 / 967 / 968 / 969 / 970 / 971 / 972 / 973 / 974 / 975 / 976 / 977 / 978 / 979 / 980 / 981 / 982 / 983 / 984 / 985 / 986 / 987 / 988 / 989 / 990 / 991 / 992 / 993 / 994 / 995 / 996 / 997 / 998 / 999 / 1000



Washington County, AR
I certify this instrument was filed on
10/06/2022 11:52:28 AM
and recorded in Real Estate
File Number 2022-00032897
Kyle Sylvester - Circuit Clerk

by

