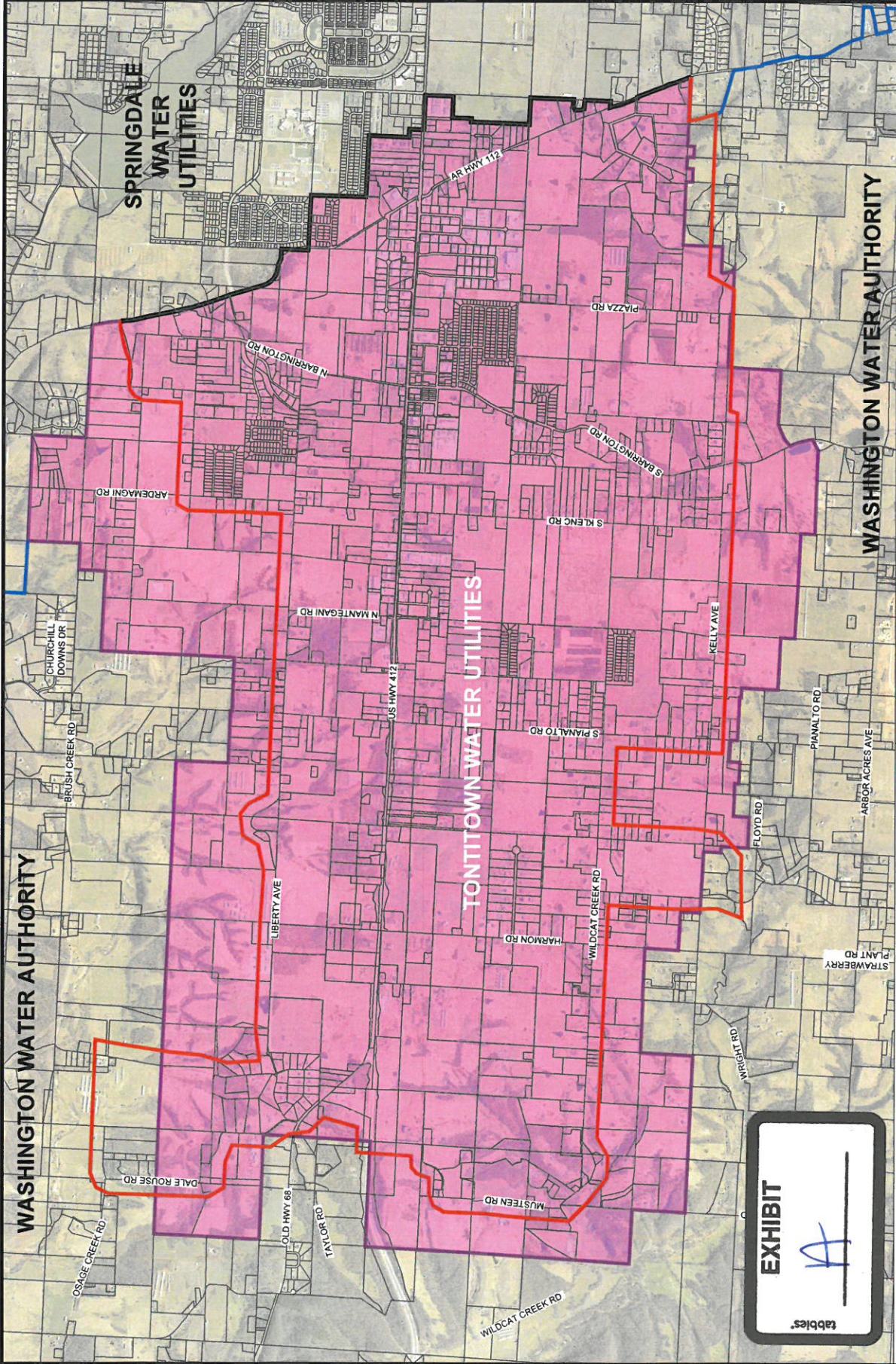


Washington Water Authority
 12567 West Highway 62
 Farmington, AR 72730
 479-267-2111

TONTITOWN UTILITIES - WWA SERVICE BOUNDARY MAP
 WASHINGTON COUNTY, ARKANSAS

Drawn By: RZJ
 Checked By:

Date: FEB 2021
 Scale:
 Revisions:
 Sheet
 MAP 01



SERVICE AREA BOUNDARY AGREEMENT
 THIS AGREEMENT IS HEREBY MADE BY AND BETWEEN THE CITY OF TONTITOWN AND THE WASHINGTON WATER AUTHORITY. THE SHADDED AREA SHALL BE THE SERVICE TERRITORY FOR TONTITOWN WATER UTILITIES. THIS MAP IS A FOLLOW UP TO THE SERVICE AREA MAP APPROVED BETWEEN TONTITOWN AND WASHINGTON COUNTY RDA IN 1987 AT THE WASHINGTON COUNTY CLERK'S OFFICE. ALL AREAS BEYOND SAID SHADDED BOUNDARY IN WASHINGTON COUNTY SHALL BE SERVED BY WASHINGTON WATER AUTHORITY. BOTH PARTIES AGREE TO ALLOW THE OTHER PARTY TO UTILIZE ITS UTILITY EASEMENTS IN AREAS OF PARALLEL MAINS.

AS APPROVED BY THE CITY OF TONTITOWN, ARKANSAS
 DATE _____
 AS APPROVED BY WASHINGTON WATER AUTHORITY
 DATE _____

MAYOR: PAUL COLVIN JR.
 PUBLIC WORKS DIRECTOR: JAMES CLARK
 WWA CHAIRMAN: RANDY DOGLEN
 WCRDA CHAIRMAN: RICK JOHNSON
 GENERAL MANAGER: JOSH MOORE

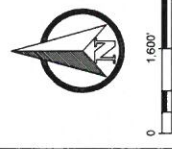
LEGEND

- TONTITOWN WATER UTILITIES SERVICE BOUNDARY
- WASHINGTON WATER AUTHORITY SERVICE BOUNDARY
- TONTITOWN WATER UTILITIES / WASHINGTON WATER AUTHORITY SERVICE BOUNDARY (WASHINGTON COUNTY RDA / CITY OF TONTITOWN FILED 1997)
- TONTITOWN WATER UTILITIES / WASHINGTON WATER AUTHORITY SERVICE BOUNDARY (2021)
- TONTITOWN WATER UTILITIES SERVICE TERRITORY (2021)
- WASHINGTON COUNTY PARCEL BOUNDARY

EXHIBIT

tabbles®

A



WASHINGTON WATER AUTHORITY

TONTITOWN WATER UTILITIES

SPRINGDALE WATER UTILITIES