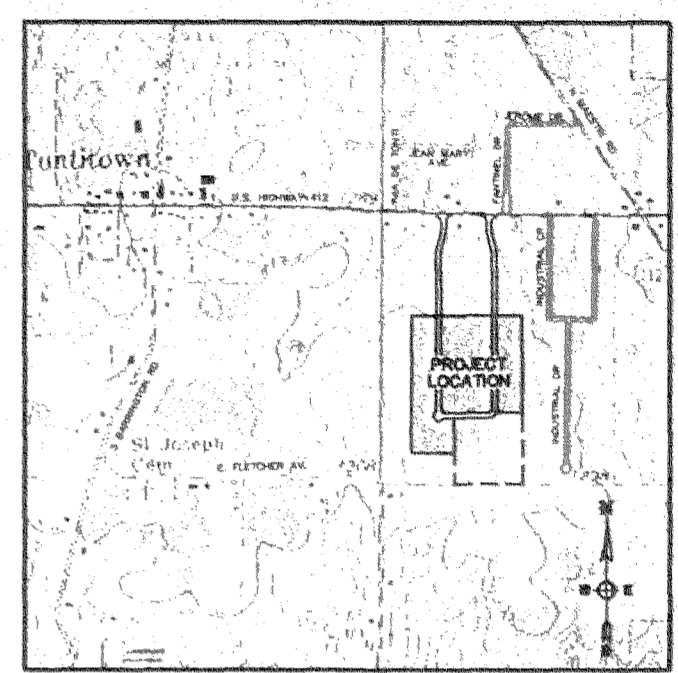
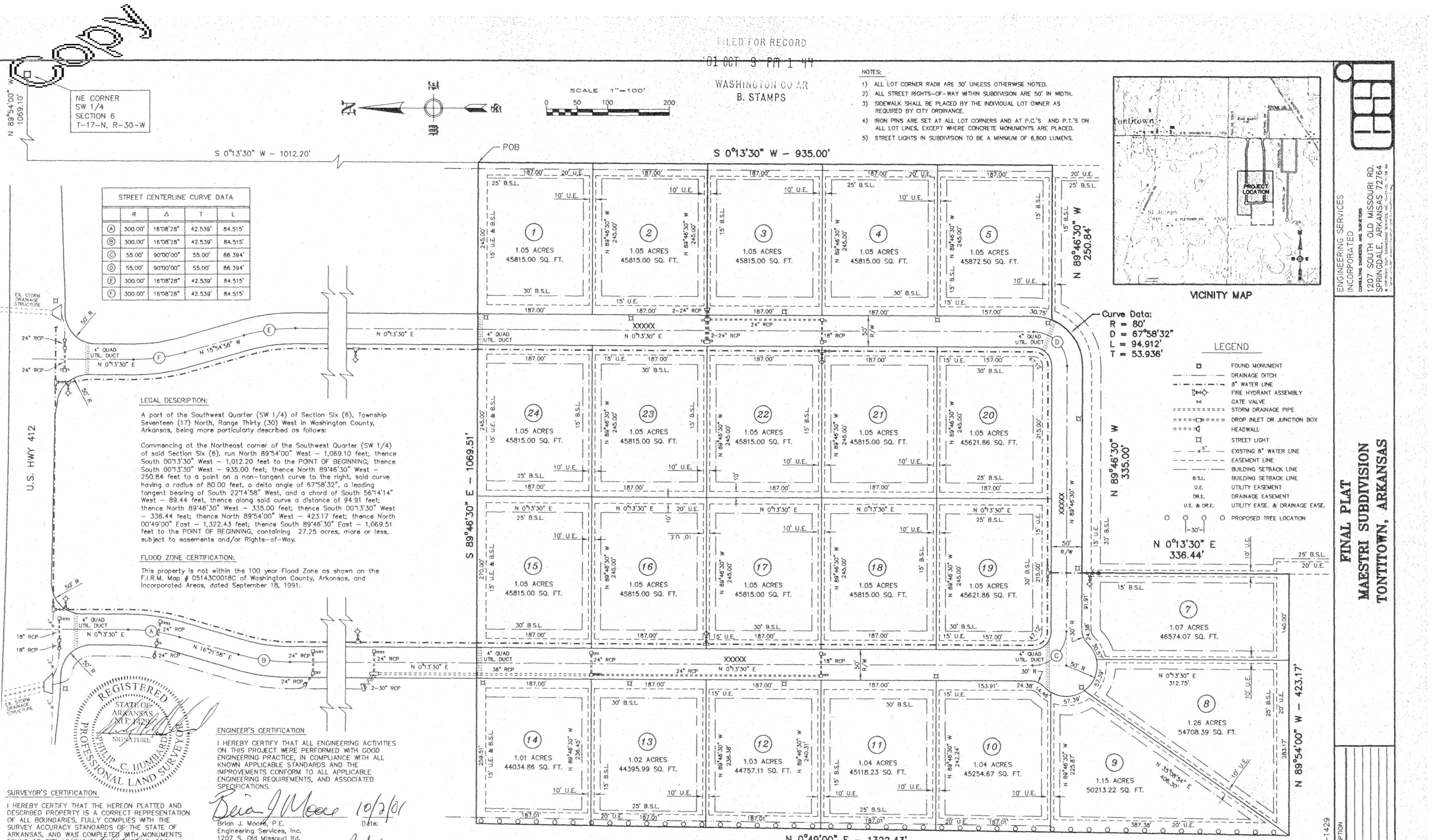


WASHINGTON CO AR
B. STAMPS

- NOTES:
- 1) ALL LOT CORNER RADII ARE 30° UNLESS OTHERWISE NOTED.
 - 2) ALL STREET RIGHTS-OF-WAY WITHIN SUBDIVISION ARE 50' IN WIDTH.
 - 3) SIDEWALK SHALL BE PLACED BY THE INDIVIDUAL LOT OWNER AS REQUIRED BY CITY ORDINANCE.
 - 4) IRON PINS ARE SET AT ALL LOT CORNERS AND AT P.C.'S AND P.T.'S ON ALL LOT LINES, EXCEPT WHERE CONCRETE MONUMENTS ARE PLACED.
 - 5) STREET LIGHTS IN SUBDIVISION TO BE A MINIMUM OF 8,000 LUMENS.



ESI
ENGINEERING SERVICES
INCORPORATED
CONSULTING ENGINEERS AND SURVEYORS
1207 SOUTH OLD MISSOURI RD.
SPRINGDALE, ARKANSAS 72764
© COPYRIGHT 2001, ENGINEERING SERVICES, INC. 001-171-1138



U.S. HWY 412

FINAL PLAT
MAESTRI SUBDIVISION
TONTITOWN, ARKANSAS

REGISTERED
STATE OF ARKANSAS
NO. 1429
PHILIP C. HUMBARD
PROFESSIONAL LAND SURVEYOR

ENGINEER'S CERTIFICATION
I HEREBY CERTIFY THAT ALL ENGINEERING ACTIVITIES ON THIS PROJECT WERE PERFORMED WITH GOOD ENGINEERING PRACTICE, IN COMPLIANCE WITH ALL KNOWN APPLICABLE STANDARDS AND THE IMPROVEMENTS CONFORM TO ALL APPLICABLE ENGINEERING REQUIREMENTS, AND ASSOCIATED SPECIFICATIONS.
Brian J. Moore 10/2/01
Date: Brian J. Moore, P.E.
Engineering Services, Inc.
1207 S. Old Missouri Rd.
Springdale, Ar 72764
501-751-8733

SURVEYOR'S CERTIFICATION
I HEREBY CERTIFY THAT THE HEREON PLATTED AND DESCRIBED PROPERTY IS A CORRECT REPRESENTATION OF ALL BOUNDARIES, FULLY COMPLIES WITH THE SURVEY ACCURACY STANDARDS OF THE STATE OF ARKANSAS, AND WAS COMPLETED WITH MONUMENTS FOUND OR SET AS SHOWN ON AUGUST 10, 2001.
Philip C. Humbard 10-02-01
Date: Philip C. Humbard, P.L.S.
Engineering Services, Inc.
1207 S. Old Missouri Rd.
Springdale, Ar 72764
501-751-8733

CERTIFICATES OF ACCEPTANCE: The undersigned hereby certify that this plat meets current regulations of the City of Tontitown as they pertain to this plat and to the offices of responsibility shown below.
DATE: 10/2/01 SIGNATURE: *[Signature]*
BUILDING OFFICIAL / CODE ENFORCEMENT OFFICER

PLANNING COMMISSION'S CERTIFICATION OF APPROVAL FOR RECORDING
THIS PLAT OF MAESTRI SUBDIVISION, LOCATED IN TONTITOWN, WASHINGTON COUNTY, ARKANSAS IS HEREBY APPROVED FOR RECORDING BY THE TONTITOWN, ARKANSAS PLANNING COMMISSION
THIS 2ND DAY OF OCTOBER 2001.
[Signature] 10/2/01
CHAIRMAN, TONTITOWN, ARKANSAS
[Signature] 10-2-01
SECRETARY, TONTITOWN, ARKANSAS

TOWN COUNCIL'S CERTIFICATION OF ACCEPTANCE OF DEDICATION
THIS PLAT OF MAESTRI SUBDIVISION, LOCATED IN TONTITOWN, WASHINGTON COUNTY, ARKANSAS IS HEREBY APPROVED, INCLUDING ACCEPTANCE OF ALL DEDICATION, BY THE TONTITOWN, ARKANSAS TOWN COUNCIL
THIS 2ND DAY OF OCTOBER 2001.
[Signature] 10/2/01
MAYOR, CITY OF TONTITOWN, ARKANSAS
[Signature] 10-2-01
CITY CLERK, CITY OF TONTITOWN, ARKANSAS

Frank Maestri 10-02-01
Date: FRANK MAESTRI, PARTNER
MAESTRI ENTERPRISES, L.L.C.
301 Emerald Point Dr.
SPRINGDALE, AR 72764
501-751-7393
Paul Maestri 10-2-01
Date: PAUL MAESTRI, PARTNER
MAESTRI ENTERPRISES, L.L.C.
301 Emerald Point Dr.
SPRINGDALE, AR 72764
501-751-7393

OWNER/DEVELOPER:
MAESTRI ENTERPRISES, L.L.C.
301 Emerald Point Dr.
Springdale, Ar 72764
ZONING: Commercial
SURVEYOR/ENGINEER:
Engineering Services, Inc.
1207 South Old Missouri Road
P.O. Box 282
Springdale, AR 72764
STATE OF ARKANSAS
COUNTY OF WASHINGTON
17-87
SUBSCRIBED AND SWORN BEFORE ME THIS _____ DAY OF _____, 2001
MY COMMISSION EXPIRES _____ NOTARY PUBLIC

PLAT CODE 500-17N-30W-0-06-300-72-1429

REVISION	DATE	DESCRIPTION

SCALE: 1" = 100'
DATE: OCT. 2001
DRAWN BY: _____
W.O. # 00915
1