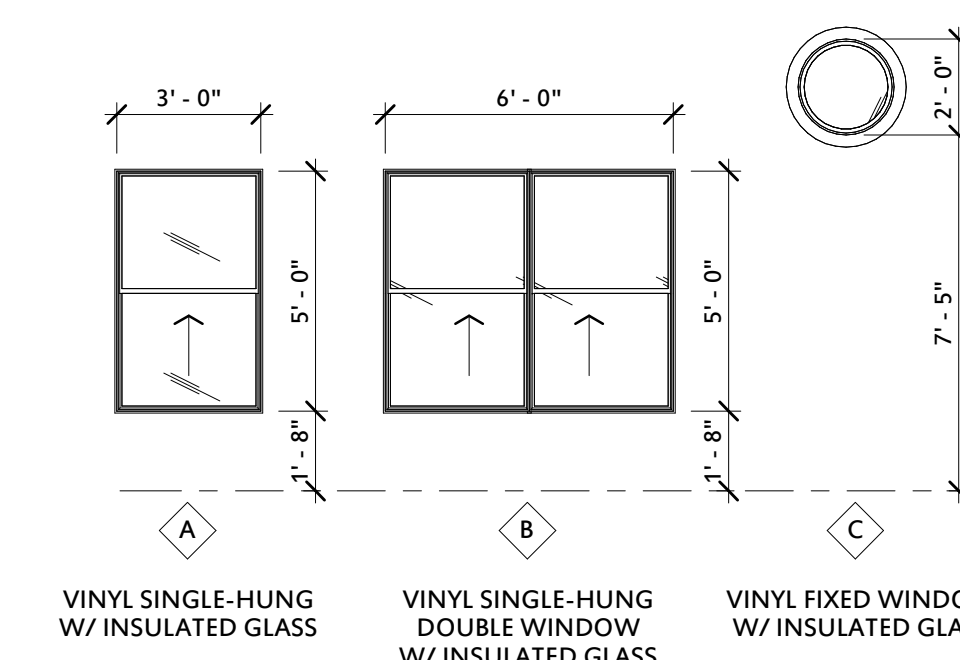




1-STORY ROW UNITS
FOR CASCADE CONSTRUCTION

CONSTRUCTION DOCUMENTS

-  ASPHALT SHINGLE ROOF
-  CEMENT BOARD SIDING W/ TRIM & BATTENS
-  BRICK VENEER

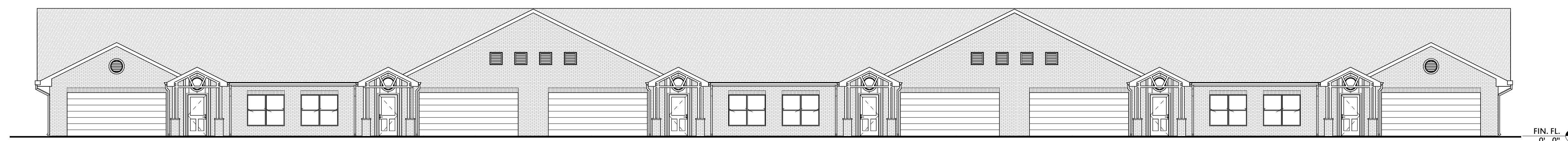


NOTE: ALL OPERABLE WINDOWS HIGHER THAN 6'-0" ABOVE GROUND BELOW SHALL HAVE INTEGRAL FALL PREVENTION DEVICES COMPLYING WITH ASTM F 2090

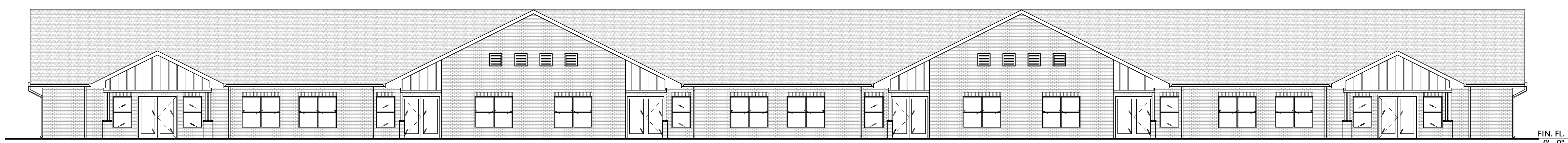
 WINDOW LEGEND

$1/4" = 1'-0"$

1 SIDE ELEVATION



2 OVERALL FRONT ELEVATION



3 OVERALL BACK ELEVATION

CASCADE MULTIFAMILY

Key Plan

[illegible]

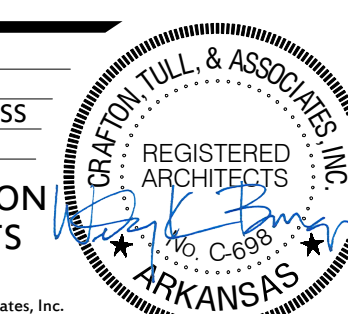
This document, and the ideas and designs incorporated herein, as an instrument of professional service, is the property of Crafton, Tull & Associates, Inc., and is not to be used, in whole or in part, for any other project, without the written authorization of Crafton, Tull & Associates, Inc.

PROJECT NO: 18114700
ISSUE DATE: 4/19/19
CONTACT: W.BURGESS
CHECKED BY:

CONSTRUCTION
DOCUMENTS

© 2019 Crafton, Tull & Associates, Inc.




EXTERIOR ELEVATIONS





NOTE: ALL OPERABLE WINDOWS HIGHER THAN 6'-0" ABOVE GROUND BELOW SHALL HAVE INTEGRAL FALL PREVENTION DEVICES COMPLYING WITH ASTM F 2090

$$1/4'' = 1'-0''$$

-  ASPHALT SHINGLE ROOF
 -  CEMENT BOARD SIDING W/ TRIM & BATTENS
 -  BRICK VENEER


$$\frac{1}{4}'' = 1'-0''$$


1/4" = 1'-0"

Key Plan

[illegible]

This document, and the ideas and designs incorporated herein, as an instrument of professional service, is the property of Crafton, Tull & Associates, Inc., and is not to be used, in whole or in part, for any other project, without the written authorization of Crafton, Tull & Associates, Inc.

PROJECT NO: 18114700
ISSUE DATE: 4/19/19
CONTACT: W.BURGESS
CHECKED BY:

CONSTRUCTION
DOCUMENTS

© 2019 Crafton, Tull & Associates, Inc.

ENLARGED ELEVATIONS

