

# CROSS POINTE CHURCH TONTITOWN, ARKANSAS

## LARGE SCALE DEVELOPMENT PLAN

### GENERAL NOTES TO CONTRACTOR

1. THE CONTRACTOR IS SPECIFICALLY CAUTIONED THAT THE LOCATION AND/OR ELEVATION OF EXISTING UTILITIES AS SHOWN ON THESE PLANS IS BASED ON RECORDS OF THE VARIOUS UTILITY COMPANIES, AND WHERE POSSIBLE, MEASUREMENTS MADE IN THE FIELD. THE INFORMATION IS NOT TO BE RELIED ON AS BEING EXACT OR COMPLETE. THE CONTRACTOR MUST CONTACT THE APPROPRIATE UTILITY COMPANIES AT LEAST 72 HOURS BEFORE ANY EXCAVATION PROCEEDS. MEASUREMENTS SHOWN ON THE PLANS. IT SHALL BE THE CONTRACTOR'S RESPONSIBILITY TO RELOCATE UTILITIES WHICH CONFLICT WITH THE PROPOSED CONSTRUCTION.
2. CONTRACTOR SHALL VERIFY HORIZONTAL AND VERTICAL LOCATION OF ALL EXISTING UTILITIES PRIOR TO STARTING CONSTRUCTION.
3. EXISTING GRADE CONTOURS ARE AT ONE FOOT INTERVALS.
4. PROPOSED CONTOURS ARE AT FINISH GRADE AND ARE AT ONE FOOT INTERVALS.
5. PROPOSED SPOT ELEVATIONS ARE TOP OF FINISH GROUND UNLESS OTHERWISE INDICATED OR SHOWN.
6. THE CONTRACTOR SHALL ADHERE TO ALL TERMS AND CONDITIONS AS OUTLINED IN THE STORMWATER POLLUTION PREVENTION PLAN.
7. CONTRACTOR TO INSTALL AND ABANDON ENTRIES ANYWHERE PROPOSED STREETS ENTER EXISTING PUBLIC STREETS. ENTRIES TO BE CONSTRUCTED A MIN. OF 50" IN LENGTH BY WIDTH OF PROPOSED STREET AND TO A DEPTH OF 8 INCHES.
8. CONTRACTOR TO INSTALL EROSION CONTROL FENCING PRIOR TO BEGINNING ANY CONSTRUCTION. FENCING SHALL BE MAINTAINED & REPAIRED AS NECESSARY BY THE CONTRACTOR DURING CONSTRUCTION.
9. CONTRACTOR SHALL ASSURE POSITIVE DRAINAGE AWAY FROM BUILDINGS FOR ALL NATURAL AND PAVED AREAS.
10. CONTRACTOR SHALL ADJUST AND/OR NEARLY CUT EXISTING PAVEMENT TO ASSURE A SMOOTH FIT AND TRANSITION.
11. ALL CONCRETE TO HAVE A MINIMUM 28 DAY COMPRESSION STRENGTH OF 3000 PSI.
12. DAMAGE DURING CONSTRUCTION TO ANY EXISTING STRUCTURES TO REMAIN SHALL BE THE CONTRACTOR'S RESPONSIBILITY TO REPAIR AND/OR REPLACE. THE CONSTRUCTION AND INSTALLATION OF WATER AND SANITARY SINKER UTILITIES SHALL BE IN COMPLIANCE WITH THE CITY OF TONTITOWN'S WATER AND SEWER SPECIFICATIONS, (REVISED APRIL 5, 2016) PROCEDURES AND DETAILS.
13. ALL MATERIALS AND CONSTRUCTION SHALL COMPLY WITH THE CITY OF TONTITOWN'S REQUIREMENTS. IN THE CASE OF CONFLICTS, THE CITY'S ORDINANCE SHALL GOVERN.
14. ALL SIDEWALKS AND HANDICAP RAMPWAYS SHALL BE BUILT TO THE CURRENT STANDARDS OF THE AMERICANS WITH DISABILITIES ACT REQUIREMENTS.
15. ALL SIDEWALKS AND HANDICAP RAMPWAYS SHALL BE BUILT TO THE CURRENT STANDARDS OF THE AMERICANS WITH DISABILITIES ACT REQUIREMENTS.

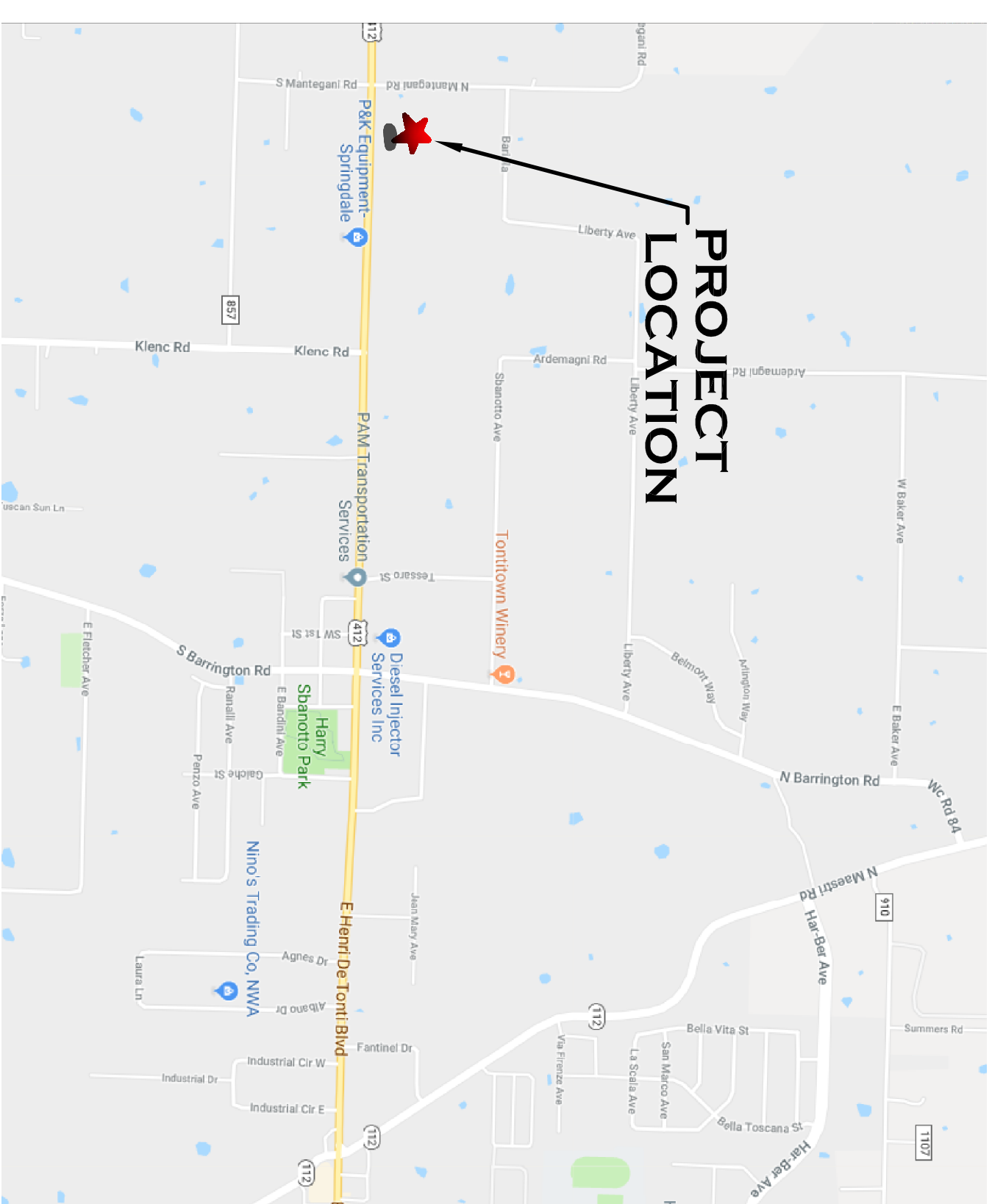
### CONTACT INFORMATION

**CITY OF TONTITOWN**  
**WALTER & SEWER**  
CONTACT: JAMES CLARK  
201 E. HENRI DE TONTI  
TONTITOWN, AR 72770  
PHONE: 479-442-3100  
FAX: 501-421-9774

**UTILITY**  
CONTACT: SUSAN CLOUSER  
P.O. BOX 7449  
SPRINGDALE, AR 72766  
PHONE: 479-442-3107  
FAX: 479-442-3117

**BLACK HILLS ENERGY**  
CONTACT: LEONARD TIDWYAN  
P.O. BOX 7449  
SPRINGDALE, AR 72766  
PHONE: 800-521-6144  
FAX: 479-684-4617  
CONTACT: WES MAHAFFEY  
PHONE: 479-263-2167

**COX COMMUNICATIONS**  
CHAD HODGE  
4901 SOUTH 48TH ST  
SPRINGDALE, AR 72762  
PHONE: 479-717-3607



VICINITY MAP  
NT-5.  
NORTH

INDEX OF DRAWINGS	COVER SHEET
01	COVER SHEET
02	PHASE PLAN
03	SITE PLAN
04	UTILITY PLAN
05	LANDSCAPE PLAN
06	GRADING, DRAINAGE AND EROSION CONTROL PLAN
07-08	DETAILS

PRELIMINARY PLAN FOR INSPECTION PURPOSES ONLY.  
NOT FOR RECORD PURPOSES.

PROJECT SITE ADDRESS: 1174 W HENRI DE TONTI BLVD  
SPRINGDALE, ARKANSAS 72762

PARCEL: 830-37866-000 & 830-37857-000

ZONING CLASSIFICATION: C-2

PROPOSED USE: CHURCH SANCTUARY  
OWNER: CROSS POINTE COMMUNITY CHURCH, INC  
1174 W HENRI DE TONTI BLVD  
SPRINGDALE, AR 72762  
PHONE: (479) 361-9922  
FAX: (479) 361-9932

DEVELOPER: DON PETERS CONSTRUCTION, INC.  
ATTN: TIM ATWOOD  
500 E COMETS AVE #22718  
STATE SPRING, AR 72778  
PHONE: (479) 248-2116  
FAX: (479) 248-1019

ENGINEER/SURVEYOR: BATES & ASSOCIATES, INC.  
7230 S PLEASANT RIDGE DR.  
FAVETTEVILLE, AR 72704  
PHONE: (479) 442-9350  
FAX: (479) 521-9350

ARCHITECT: BARRS ARCHITECTURE  
820 TIGER BLVD SUITE 4  
BENTONVILLE, AR 72715  
PHONE: (479) 319-6045

### OWNERSHIP OF DOCUMENTS

THIS DOCUMENT AND THE IDEAS AND DESIGNS INCORPORATED HEREIN AS AN INSTRUMENT OF PROFESSIONAL SERVICES, IS THE PROPERTY OF BATES & ASSOCIATES, INC. AND IS NOT TO BE USED, IN WHOLE OR PART, FOR ANY OTHER PROJECT WITHOUT THE WRITTEN AUTHORIZATION OF BATES & ASSOCIATES, INC.

### SAFETY NOTICE TO CONTRACTOR

IN ACCORDANCE WITH GENERALLY ACCEPTED CONSTRUCTION PRACTICES, THE CONTRACTOR WILL BE SOLELY AND COMPLETELY RESPONSIBLE FOR CONDITIONS OF THE JOB SITE, INCLUDING SAFETY OF ALL PERSONS AND PROPERTY DURING PERFORMANCE OF THE WORK. THIS REQUIREMENT WILL APPLY CONTINUOUSLY AND NOT BE LIMITED TO NORMAL WORKING HOURS.

THE DUTY OF THE ENGINEER TO CONDUCT CONSTRUCTION REVIEW OF THE CONTRACTOR'S PERFORMANCE IS LIMITED TO THE CONTRACTOR'S SAFETY PRACTICES IN OR NEAR THE CONSTRUCTION SITE.



### ENGINEER'S NOTICE TO CONTRACTOR

THE EXISTENCE AND LOCATION OF ANY UNDERGROUND UTILITY PIPES OR STRUCTURES SHOWN ON THESE DRAWINGS ARE OBTAINED BY A SEARCH OF THE AVAILABLE RECORDS, TO THE BEST OF OUR KNOWLEDGE THERE ARE NO EXISTING UTILITIES EXCEPT AS SHOWN ON THESE DRAWINGS AND WE ASSUME NO RESPONSIBILITY AS TO THE ACCURACY OF THESE DEFICED LOCATION ON THESE DRAWINGS. THE CONTRACTOR IS REQUIRED TO TAKE DUE PRECAUTIONARY MEASURES TO PROTECT THE UTILITY LINES SHOWN AND ALL OTHER LINES NOT OF RECORD OR NOT SHOWN ON THESE DRAWINGS BY NOTIFICATION OF THE LOCATION IN THE FIELD PRIOR TO THE INITIATION OF THE ACTUAL PORTION OF THEIR WORK.

NO INFORMATION AVAILABLE FOR STATIC PRESSURE AND FLOW ON NEAREST FIRE HYDRANTS.

### LEGAL DESCRIPTIONS

PARCEL #830-37857-000 OF C & T BUSINESS PARK IN THE CITY OF TONTITOWN, AS PER FINAL PLAT OF SAID BUSINESS PARK ON FILE IN THE OFFICE OF THE CIRCUIT CLERK AND EX-OFFICIO RECORDER OF WASHINGTON COUNTY, ARKANSAS, SUBJECT TO ALL EASEMENTS AND RIGHTS-OF-WAY OF RECORD.  
PARCEL #830-37866-000 OF C & T BUSINESS PARK IN THE CITY OF TONTITOWN, AS PER FINAL PLAT OF SAID BUSINESS PARK ON FILE IN THE OFFICE OF THE CIRCUIT CLERK AND EX-OFFICIO RECORDER OF WASHINGTON COUNTY, ARKANSAS, SUBJECT TO ALL EASEMENTS AND RIGHTS-OF-WAY OF RECORD.

### GENERAL SURVEY NOTE:

THE UNDERGROUND UTILITIES SHOWN HAVE BEEN LOCATED FROM FIELD SURVEY INFORMATION AND EXISTING DRAWINGS THE SURVEYOR MAKES NO GUARANTEES THAT THE UNDERGROUND UTILITIES SHOWN ARE IN THE EXACT LOCATION INDICATED, ALTHOUGH THE SURVEYOR DOES CERTIFY THAT THEY ARE LOCATED AS ACCURATELY AS POSSIBLE FROM INFORMATION AVAILABLE. THE SURVEYOR HAS NOT PHYSICALLY LOCATED THE UNDERGROUND UTILITIES.

**PARKING INFORMATION:**  
CHURCH SANCTUARY  
ONE (1) PARKING SPACE FOR EACH FOUR (4) SEATS BASED ON MAXIMUM SEATING CAPACITY IN THE PRINCIPAL ASSEMBLY ROOM.  
MAXIMUM SEATING CAPACITY = 295  
PARKING SPACES = 74  
PARKING PROVIDED = 72  
HANDICAP PARKING REQUIRED = 4  
HANDICAP PARKING PROVIDED = 5

### BUILDING SETBACKS (C-2)

FRONT	25ft (RESIDENTIAL USES)
FRONT	25ft (NONRESIDENTIAL USES)
SIDE	25ft (STREET SIDE)
SIDE	30ft (INTERIOR RESIDENTIAL USES)
REAR	10ft (INTERIOR NONRESIDENTIAL USES)
REAR	25ft (RESIDENTIAL USES)
REAR	25ft (NONRESIDENTIAL USES)

### FLOOD CERTIFICATION:

NO PORTION OF THIS PROPERTY IS LOCATED WITHIN FLOOD ZONE "A" OR "AE" AS DETERMINED BY THE NATIONAL FLOOD FIRM PANEL #051430045F, DATED MAY 16, 2009. INSURANCE PROGRAM FLOOD INSURANCE RATE MAP FOR WASHINGTON COUNTY, ARKANSAS.

**BASE OF ELEVATION:** CITY OF TONTITOWN GIS CONTROL MONUMENT #R (ELEV: 1278.55 - NAVD 88)

**BASE OF BEARING:** ARKANSAS STATE PLAN COORDINATE SYSTEM - AR NORTH ZONE

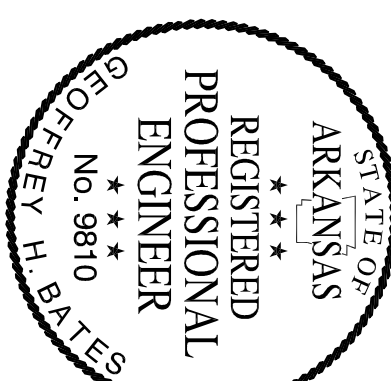
THERE ARE NO EXISTING WETLANDS ON THIS SITE.

PROPOSED	EXISTING	DESCRIPTION
[Symbol]	[Symbol]	ASPHALT (EDGE)
[Symbol]	[Symbol]	ASPHALT (SURFACE)
[Symbol]	[Symbol]	BUILDING
[Symbol]	[Symbol]	BUILDING SETBACK LINE
[Symbol]	[Symbol]	BOLD TYPED (UNDERGROUND)
[Symbol]	[Symbol]	CABLE TV (OVERHEAD)
[Symbol]	[Symbol]	CENTERLINE
[Symbol]	[Symbol]	CONCRETE SURFACE
[Symbol]	[Symbol]	CONDUIT
[Symbol]	[Symbol]	CONTINUOUS
[Symbol]	[Symbol]	CORB & GUTTER
[Symbol]	[Symbol]	ELECTRICAL (UNDERGROUND)
[Symbol]	[Symbol]	ELECTRICAL (OVERHEAD)
[Symbol]	[Symbol]	ELECT. TRANSFORMER
[Symbol]	[Symbol]	EASEMENT
[Symbol]	[Symbol]	FENCE (WIRE/WOOD/CHAIN)
[Symbol]	[Symbol]	FIBER OPTIC CABLE
[Symbol]	[Symbol]	FIRE HYDRANT ASSEMBLY
[Symbol]	[Symbol]	FLOWLINE
[Symbol]	[Symbol]	FORCE MAIN
[Symbol]	[Symbol]	GAS MAIN
[Symbol]	[Symbol]	GAS METER
[Symbol]	[Symbol]	GRAVEL SURFACE (EDGE)
[Symbol]	[Symbol]	GRAVEL SURFACE
[Symbol]	[Symbol]	IRON PIN (5/8" RE-BAR)
[Symbol]	[Symbol]	LIGHT
[Symbol]	[Symbol]	MONUMENT (CONCRETE)
[Symbol]	[Symbol]	POND
[Symbol]	[Symbol]	POWER POLE
[Symbol]	[Symbol]	PROPERTY LINE (EXTERNAL)
[Symbol]	[Symbol]	RETAINING WALL
[Symbol]	[Symbol]	RIGHT-OF-WAY
[Symbol]	[Symbol]	SANITARY SEWER PIPE
[Symbol]	[Symbol]	SANITARY SEWER MANHOLE
[Symbol]	[Symbol]	SANITARY SEWER SERVICE
[Symbol]	[Symbol]	SECTION LINE
[Symbol]	[Symbol]	SIDEWALK
[Symbol]	[Symbol]	SIGN
[Symbol]	[Symbol]	SPOT ELEVATION
[Symbol]	[Symbol]	STORM SEWER PIPE
[Symbol]	[Symbol]	STORM SEWER INLET
[Symbol]	[Symbol]	STORM SEWER BALES
[Symbol]	[Symbol]	TELEPHONE (PEP/MANHOLE)
[Symbol]	[Symbol]	TELEPHONE (UNDERGROUND)
[Symbol]	[Symbol]	TELEPHONE (OVERHEAD)
[Symbol]	[Symbol]	TREE LINE CANOPY
[Symbol]	[Symbol]	TREE/TREE TO BE REMOVED
[Symbol]	[Symbol]	UTILITY EASEMENT
[Symbol]	[Symbol]	WATER MAIN PIPE
[Symbol]	[Symbol]	WATER VALVE
[Symbol]	[Symbol]	WATER METER
[Symbol]	[Symbol]	WATER THIRST BLOCK
[Symbol]	[Symbol]	WATER MAIN REDUCER
[Symbol]	[Symbol]	WATER MAIN BLOWER VALVE

REVISIONS	DATE
BUDGET SET	03/16/18
1st SUBMITTAL	04/03/18
2nd SUBMITTAL	04/17/18

DRAWN BY: T. Ford

ENGINEER: G. Bates



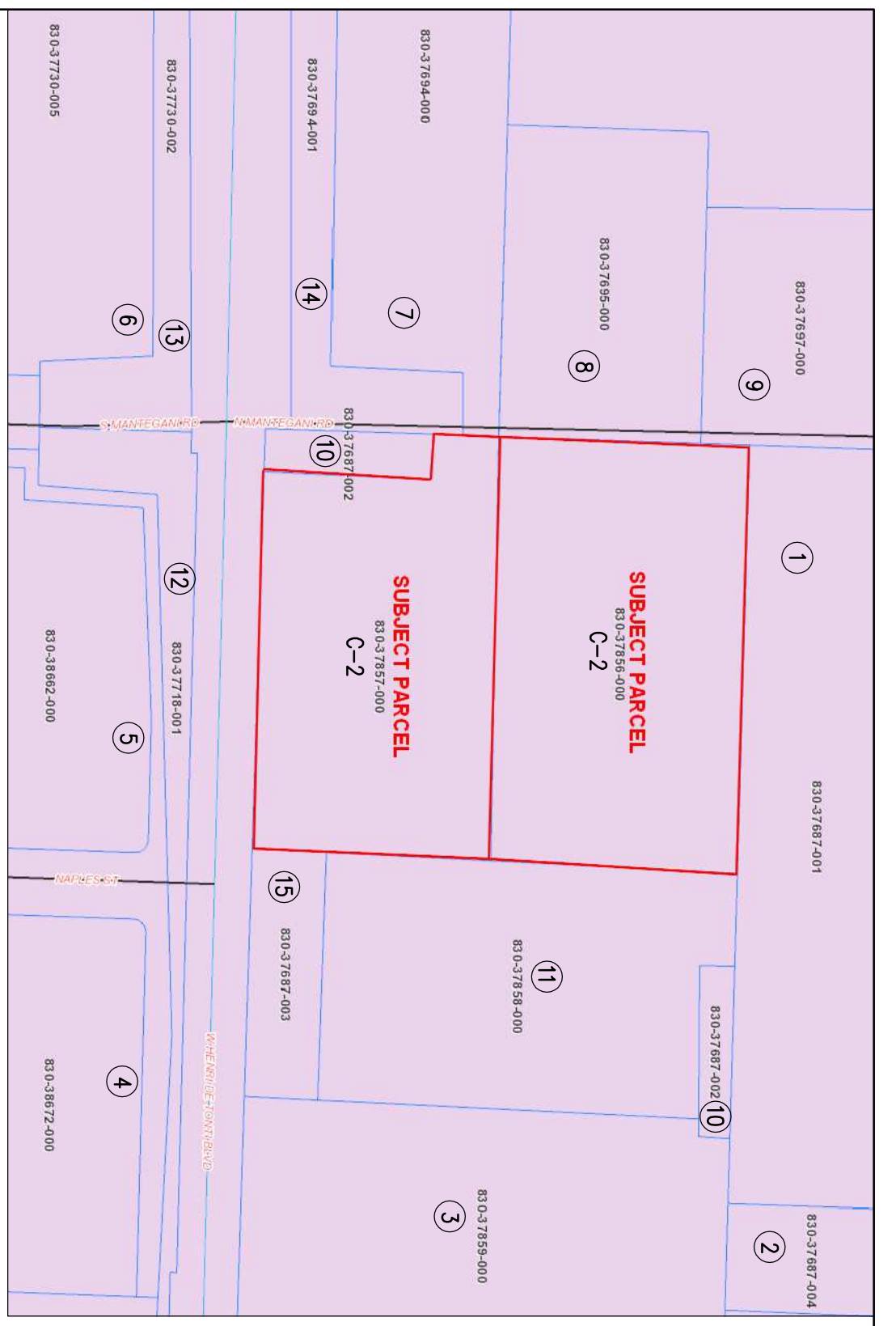
Copyright © 2018 Bates & Associates, Inc.

CROSS POINTE CHURCH  
LARGE SCALE DEVELOPMENT PLAN  
COVER SHEET  
TONTITOWN, ARKANSAS

**Bates & Associates, Inc.**  
Civil Engineering & Surveying  
7230 S. Pleasant Ridge Drive Phone • 479.442.9350 • Fax 479.521.9350  
Fayetteville, Arkansas 72704

PROJECT NO: 18-015  
DATE: 01





- ADJACENT PROPERTY OWNERS:**
- 1) JB HANNA LLC  
 2700 S ARMSTRONG AVE  
 FAYETTEVILLE, AR 72701-7274  
 PARCEL #830-37687-001  
 ZONED: C-2
  - 2) JB HANNA LLC  
 2700 S ARMSTRONG AVE  
 FAYETTEVILLE, AR 72701-7274  
 PARCEL #830-37687-004  
 ZONED: C-2
  - 3) JB HANNA LLC  
 2700 S ARMSTRONG AVE  
 FAYETTEVILLE, AR 72701-7274  
 PARCEL #830-37689-000  
 ZONED: C-2
  - 4) FARM CREDIT OF WESTERN ARKANSAS,  
 3115 WEST 2ND COURT  
 RUSSELLVILLE, AR 72801  
 PARCEL #830-38672-000  
 ZONED: C-2
  - 5) ARROW INVESTMENTS NORTHWEST, INC  
 PO BOX 545  
 TONTITOWN, AR 72770  
 PARCEL #830-38662-000  
 ZONED: C-2
  - 6) JE DEVELOPMENT, LLC  
 PO BOX 1549  
 SPRINGDALE, AR 72765  
 PARCEL #830-57730-005  
 ZONED: C-2
  - 7) J&J BOLEK PROPERTIES, LLC  
 PO BOX 640  
 TONTITOWN, AR 72770-0640  
 PARCEL #830-37694-000  
 ZONED: C-2
  - 8) J&J BOLEK PROPERTIES, LLC  
 ATTN: JOE & JUDY BOLEK  
 PO BOX 640  
 TONTITOWN, AR 72770-0640  
 PARCEL #830-37695-000  
 ZONED: C-2
  - 9) J&J BOLEK PROPERTIES, LLC  
 ATTN: JOE & JUDY BOLEK  
 PO BOX 640  
 TONTITOWN, AR 72770-0640  
 PARCEL #830-37697-000  
 ZONED: C-2
  - 10) JB HANNA LLC  
 2700 S ARMSTRONG AVE  
 FAYETTEVILLE, AR 72701-7274  
 PARCEL #830-37687-002  
 ZONED: C-2
  - 11) GROSS PONTE COMMUNITY CHURCH  
 1724 W HENRI DE TOULI BLVD  
 TONTITOWN, AR 72770-0000  
 PARCEL #830-37698-000  
 ZONED: C-2
  - 12) ARKANSAS STATE HIGHWAY COMM  
 PO BOX 2261  
 LITTLE ROCK, AR 72203  
 PARCEL #830-37716-001  
 ZONED: C-2
  - 13) ARKANSAS STATE HIGHWAY COMM  
 PO BOX 2261  
 LITTLE ROCK, AR 72203  
 PARCEL #830-37730-002  
 ZONED: C-2
  - 14) ARKANSAS STATE HIGHWAY COMM  
 PO BOX 2261  
 LITTLE ROCK, AR 72203  
 PARCEL #830-37694-001  
 ZONED: C-2
  - 15) ARKANSAS STATE HIGHWAY COMM  
 PO BOX 2261  
 LITTLE ROCK, AR 72203  
 PARCEL #830-37687-003  
 ZONED: C-2

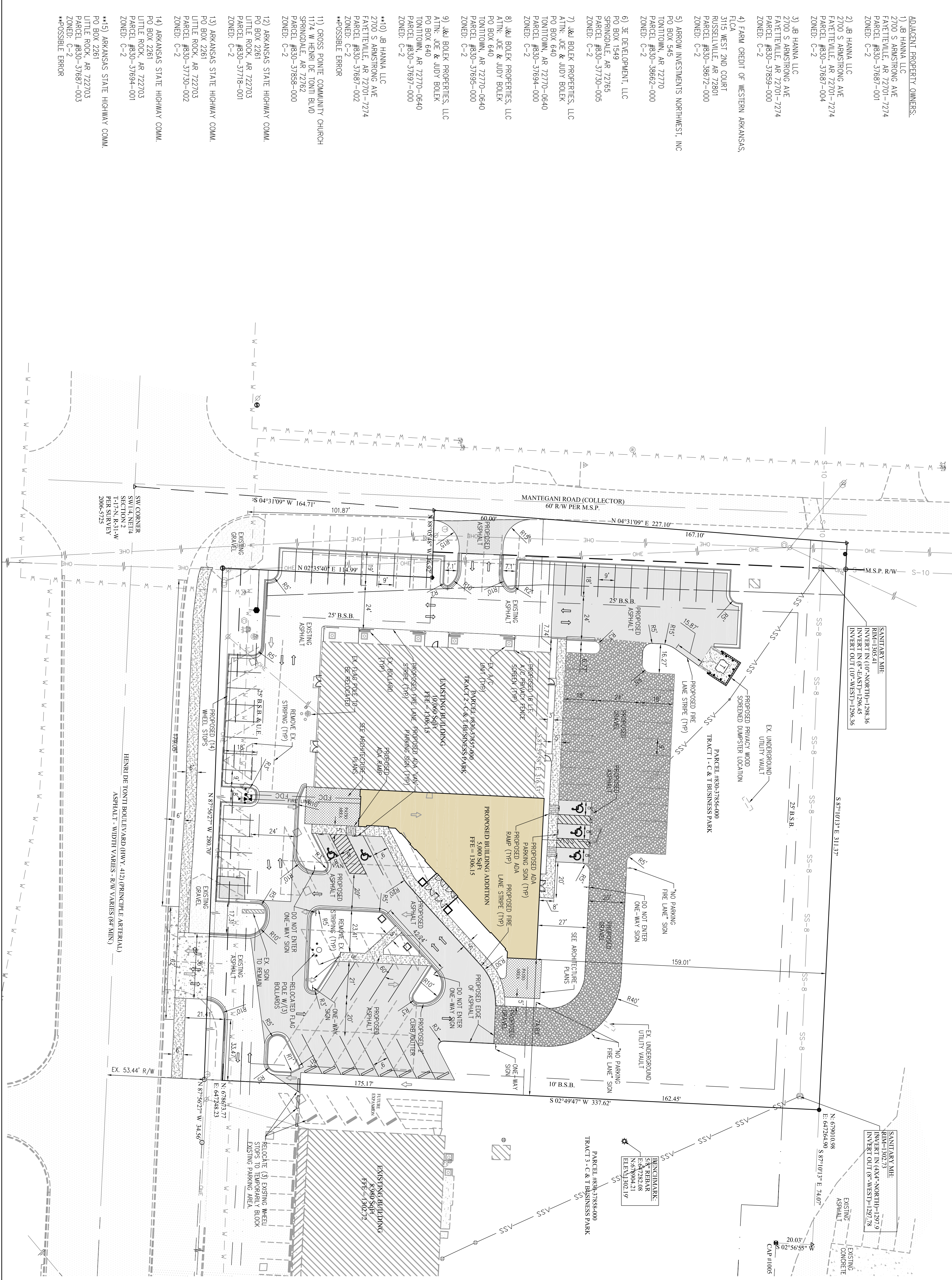
- NOTES:**
1. THERE ARE NO EXISTING WETLANDS ON THIS SITE.
  2. THIS SITE IS NOT WITHIN THE 100' FLOOD FLOODPLAIN ACCORDING TO ROW PANEL #8514200869. DATED MAY 16, 2008.
  3. THERE ARE NO KNOWN POTENTIAL HAZARDOUS MATERIALS ON THE PROPERTY.
  4. THERE ARE NO KNOWN POTENTIAL HAZARDOUS MATERIALS ON THE PROPERTY.
  5. THERE ARE NO KNOWN ABANDONED WATER WELLS, Sumps, CESSPOOLS, SPRINGS, WATER IMPOUNDMENTS, OR UNDERGROUND STRUCTURES WITHIN THE PROJECT.
  6. THERE ARE NO KNOWN EXISTING OR PROPOSED GROUND LEASES OR ACCESS AGREEMENTS ON THIS PROPERTY.
  7. THERE ARE NO KNOWN POTENTIALLY DANGEROUS AREAS, INCLUDING AREAS SUBJECT TO FLOODING, SOPE STABILITY, SETTLEMENT, EXCESSIVE NOISE, OR PREVIOUSLY FILLED AREAS.
  8. ALL INTERIOR DRIVE SHALL MEET THE REQUIRED COOPERATION RATING TO SUPPORT EMERGENCY VEHICLES.
  9. PRELIMINARY PLAN FOR INSPECTION PURPOSES ONLY, NOT FOR RECORD PURPOSES.
- ADA NOTES:**
1. CONTACT ADA ADMINISTRATOR AND REQUEST AN INSPECTION PRIOR TO POURING ANY SIDEWALK OR DRIVEWAY IN THE RIGHT-OF-WAY.
  2. HANDICAP ACCESS AREAS MUST HAVE NO MORE THAN 2% GRADE.

**LEGAL DESCRIPTIONS:**

PARCEL #830-37687-000  
 TRACT 1 OF C & T BUSINESS PARK IN THE CITY OF TONTITOWN, AS PER FINAL PLAT OF SAID BUSINESS PARK ON THE COUNTY RECORDS OF THE COUNTY OF WASHINGTON, ARKANSAS, SUBJECT TO ALL EASEMENTS AND RIGHTS-OF-WAY OF RECORD.

PARCEL #830-37687-004  
 TRACT 2 OF C & T BUSINESS PARK IN THE CITY OF TONTITOWN, AS PER FINAL PLAT OF SAID BUSINESS PARK ON THE COUNTY RECORDS OF THE COUNTY OF WASHINGTON, ARKANSAS, SUBJECT TO ALL EASEMENTS AND RIGHTS-OF-WAY OF RECORD.

**GENERAL SURVEY NOTE:**  
 ALL UTILITIES SHOWN HAVE BEEN LOCATED FROM FIELD SURVEY INFORMATION AND EXISTING DRAWINGS. THE SURVEYOR MAKES NO GUARANTEES THAT THE UNDERGROUND UTILITIES SHOWN ARE IN THE EXACT LOCATION INDICATED, ALTHOUGH THE SURVEYOR DOES CERTIFY THAT THEY ARE LOCATED AS ACCURATELY AS POSSIBLE FROM INFORMATION AVAILABLE. THE SURVEYOR HAS NOT PHYSICALLY LOCATED THE UNDERGROUND UTILITIES.



PROPOSED	LEGEND	DESCRIPTION
[Symbol]	[Symbol]	ASPHALT (EDGE)
[Symbol]	[Symbol]	ASPHALT (SURFACE)
[Symbol]	[Symbol]	BUILDING SETBACK LINE
[Symbol]	[Symbol]	BOLLARD
[Symbol]	[Symbol]	CABLE TV (UNDERGROUND)
[Symbol]	[Symbol]	CABLE TV (OVERHEAD)
[Symbol]	[Symbol]	CENTRIFUGAL
[Symbol]	[Symbol]	CONCRETE SURFACE
[Symbol]	[Symbol]	CONDUIT
[Symbol]	[Symbol]	CURB & GUTTER
[Symbol]	[Symbol]	ELECTRICAL (UNDERGROUND)
[Symbol]	[Symbol]	ELECTRICAL (OVERHEAD)
[Symbol]	[Symbol]	ELECT. TRANSDUCER
[Symbol]	[Symbol]	ELEVATOR (WOOD/GYAN)
[Symbol]	[Symbol]	FIBER OPTIC CABLE
[Symbol]	[Symbol]	FIRE LOGRANT ASSEMBLY
[Symbol]	[Symbol]	FLOOR LINE
[Symbol]	[Symbol]	FLOOR MAN
[Symbol]	[Symbol]	GAS METER
[Symbol]	[Symbol]	GRAVEL SURFACE (EDGE)
[Symbol]	[Symbol]	GRAVEL SURFACE (ELEV)
[Symbol]	[Symbol]	IRON PIN (5/8" RE-BAR)
[Symbol]	[Symbol]	LIGHT
[Symbol]	[Symbol]	MONUMENT (CONCRETE)
[Symbol]	[Symbol]	POND
[Symbol]	[Symbol]	POWER POLE
[Symbol]	[Symbol]	PROPERTY LINE (EXTERNAL)
[Symbol]	[Symbol]	RETAINING WALL
[Symbol]	[Symbol]	RIGHT-OF-WAY
[Symbol]	[Symbol]	SHANLEY SOWER PIPE
[Symbol]	[Symbol]	SHANLEY SOWER MANHOLE
[Symbol]	[Symbol]	SHANLEY SOWER SERVICE
[Symbol]	[Symbol]	SIGNAL
[Symbol]	[Symbol]	SIGNAL
[Symbol]	[Symbol]	SILT FENCE
[Symbol]	[Symbol]	SPOT ELEVATION
[Symbol]	[Symbol]	STORM SEWER PIPE
[Symbol]	[Symbol]	STORM SEWER INLET
[Symbol]	[Symbol]	STORM SEWER BALS
[Symbol]	[Symbol]	TELEPHONE FEED/MANHOLE
[Symbol]	[Symbol]	TELEPHONE (UNDERGROUND)
[Symbol]	[Symbol]	TELEPHONE (OVERHEAD)
[Symbol]	[Symbol]	TREE LINE CANOPY
[Symbol]	[Symbol]	TREE/TREE TO BE REMOVED
[Symbol]	[Symbol]	UTILITY EASEMENT
[Symbol]	[Symbol]	WATER MAIN PIPE
[Symbol]	[Symbol]	WATER VALVE
[Symbol]	[Symbol]	WATER METER
[Symbol]	[Symbol]	WATER METER BLOCK
[Symbol]	[Symbol]	WATER MAIN REDUCER
[Symbol]	[Symbol]	WATER MAIN BLOWOFF VALVE

**BUILDING SETBACKS (C-2):**

FRONT 25ft (RESIDENTIAL USES)  
 FRONT 25ft (NONRESIDENTIAL USES)  
 SIDE 25ft (STREET SIDE)  
 SIDE 30ft (INTERIOR RESIDENTIAL USES)  
 SIDE 10ft (INTERIOR NONRESIDENTIAL USES)  
 REAR 25ft (RESIDENTIAL USES)  
 REAR 25ft (NONRESIDENTIAL USES).

**FLOOD CERTIFICATION:**  
 NO PORTION OF THIS PROPERTY IS LOCATED WITHIN FLOOD ZONE "A", "AE", OR "X" AS DETERMINED BY THE NATIONAL FLOOD INSURANCE PROGRAM FLOOD INSURANCE RATE MAP FOR WASHINGTON COUNTY, ARKANSAS.

**CITY OF TONTITOWN GIS CONTROL MONUMENT #6 (ELEV: 1278.55 - NAVD 88)**

**BASE OF RECORD:**  
 ARKANSAS STATE PLAN COORDINATE SYSTEM - AR NORTH ZONE

HERE ARE NO EXISTING WETLANDS ON THIS SITE.



PROJECT NO 18-015  
 DATE 02

**Bates & Associates, Inc.**  
 Civil Engineering & Surveying  
 www.batesnwa.com  
 7230 S. Pleasant Ridge Drive Phone • 479.442.9350 • Fax 479.521.9350  
 Fayetteville, Arkansas 72704

CROSS PONTE CHURCH  
 LARGE SCALE DEVELOPMENT PLAN  
 SITE PLAN  
 TONTITOWN, ARKANSAS

REVISIONS	DATE
BUDGET SET	03/16/18
1st SUBMITTAL	04/03/18
2nd SUBMITTAL	04/17/18

DRAWN BY: T. Ford  
 ENGINEER: G. Bates

ARKANSAS REGISTERED PROFESSIONAL ENGINEER No. 9810  
 GEOFFREY H. BATES

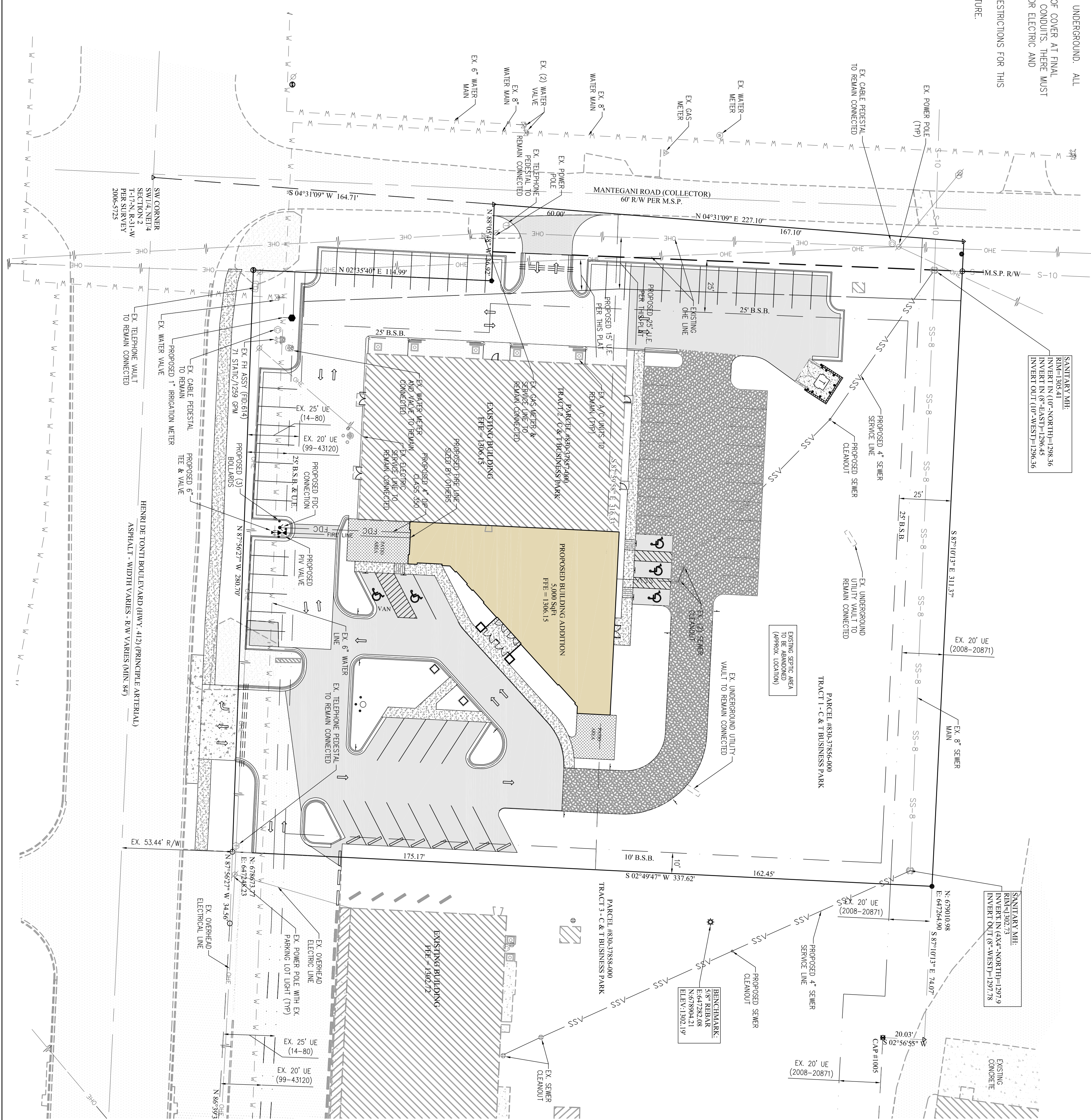
Copyright © 2018 Bates & Associates, Inc.

ALL WORK SHALL COMPLY WITH THE TONTITOWN STANDARD WATER AND SEWER SPECIFICATIONS, REVISED APRIL 5, 2016, EXCEPT WHERE EXPRESSLY ALLOWED BY THE WATER DEPARTMENT

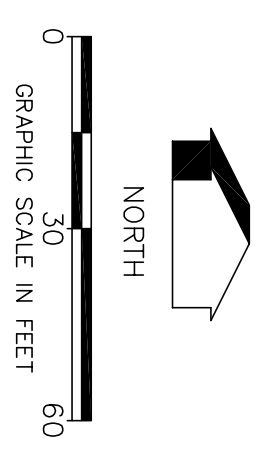
- SITE NOTES:**
1. THERE ARE NO EXISTING WETLANDS ON THIS SITE.
  2. THIS SITE IS NOT WITHIN THE 100-YEAR FLOODPLAIN ACCORDING TO FIRM PANEL #05143X0065F, DATED MAY 16, 2008.
  3. THERE ARE NO KNOWN OVERFLOW PROBLEMS ON-SITE OR IN THE PROXIMITY OF THE SITE.
  4. THERE ARE NO KNOWN EROSION PROBLEMS ON-SITE OR WITHIN 100' DOWNSTREAM OF THE PROPERTY.
  5. THERE ARE NO KNOWN ABANDONED WATER WELLS, SWAMPS, CESSPOOLS, SPRINGS, WATER IMPONDMENTS, OR UNDERGROUND STRUCTURES WITHIN THE PROJECT.
  6. THERE ARE NO KNOWN EXISTING OR PROPOSED GROUND LEASES OR ACCESS AGREEMENTS ON THIS PROPERTY.
  7. THERE ARE NO KNOWN POTENTIALLY DANGEROUS AREAS INCLUDING AREAS SUBJECT TO FLOODING, SLOPE STABILITY, SETTLEMENT, EXCESSIVE MOISTURE, OR PREVIOUSLY FILLED AREAS.

- UTILITY NOTES:**
1. DAMAGE TO OR RELOCATION OF EXISTING UTILITIES SHALL BE AT THE DEVELOPER'S EXPENSE.
  2. ALL PUBLIC WORKS AND RELOCATION REQUIREMENTS MUST BE APPROVED BY THE TONTITOWN WATER DIVISION.
  3. NOTIFY PUBLIC WORKS INSPECTOR IN ADVANCE OF PERFORMING WORK IN THE RIGHT OF WAY OR PUBLIC INFRASTRUCTURE.
  4. CONNECTION OF WATER AND SEWER SERVICES SHOULD BE COORDINATED WITH THE CITY.
  5. IF PRZ IS INSTALLED AT THIS LOCATION, PROVISIONS FOR PROTECTION AGAINST FREEZING WILL NEED TO BE MADE.

- NOTES:**
1. ALL MECHANICAL AND UTILITY EQUIPMENT LOCATED ON THE WALL OR GROUND SHALL BE SCREENED WITH TALL GRASSES OR SHRUBS.
  2. ALL EXISTING UTILITIES BELOW 12" SHALL BE RELOCATED UNDERGROUND. ALL INSTALLED UTILITIES BELOW 12" SHALL BE RELOCATED UNDERGROUND.
  3. ALL CONDUITS PLACED BY CONTRACTOR MUST HAVE 48" OF COVER AT FINAL GRADE AND BE MARKED WITH POST TO DENOTE THE END OF CONDUIT. THERE MUST BE A MINIMUM OF 12" BETWEEN CONDUITS FOR ELECTRIC AND WATER.
  4. THE EXISTING SEPTIC SYSTEM IS TO BE ABANDONED.
  5. THERE ARE NO PROPOSED COVENANTS, CONDITIONS, OR RESTRICTIONS FOR THIS PROJECT.
  6. EXTERIOR LIGHTING FIXTURES SHALL BE A "OUT-OFF" FIXTURE.



PROPOSED	EXISTING	DESCRIPTION
[Symbol]	[Symbol]	ASPHALT (EDGE)
[Symbol]	[Symbol]	ASPHALT (SURFACE)
[Symbol]	[Symbol]	BUILDING (SURFACE)
[Symbol]	[Symbol]	BUILDING SETBACK LINE
[Symbol]	[Symbol]	BOLLARD
[Symbol]	[Symbol]	CABLE TV (UNDERGROUND)
[Symbol]	[Symbol]	CABLE TV (OVERHEAD)
[Symbol]	[Symbol]	CENTERLINE
[Symbol]	[Symbol]	CONCRETE SURFACE
[Symbol]	[Symbol]	CONTOURS
[Symbol]	[Symbol]	CURB & GUTTER
[Symbol]	[Symbol]	ELECTRICAL (UNDERGROUND)
[Symbol]	[Symbol]	ELECTRICAL (OVERHEAD)
[Symbol]	[Symbol]	ELECT. TRANSFORMER
[Symbol]	[Symbol]	EASEMENT
[Symbol]	[Symbol]	FENCE (WMC/WOOD/CHAIN)
[Symbol]	[Symbol]	FIBER OPTIC CABLE
[Symbol]	[Symbol]	FIRE TRUCKWAY ASSEMBLY
[Symbol]	[Symbol]	FOUR-WAY
[Symbol]	[Symbol]	GAS MAIN
[Symbol]	[Symbol]	GAS METER
[Symbol]	[Symbol]	GRAVEL SURFACE (EDGE)
[Symbol]	[Symbol]	GRAVEL SURFACE (INTERNAL)
[Symbol]	[Symbol]	IRON PIN (5/8" RE-BAR)
[Symbol]	[Symbol]	LIGHT
[Symbol]	[Symbol]	MONUMENT (CONCRETE)
[Symbol]	[Symbol]	POND
[Symbol]	[Symbol]	POWER POLE
[Symbol]	[Symbol]	PROPERTY LINE (EXTERNAL)
[Symbol]	[Symbol]	RETAINING WALL
[Symbol]	[Symbol]	RIGHT-OF-WAY
[Symbol]	[Symbol]	SANITARY SEWER PIPE
[Symbol]	[Symbol]	SANITARY SEWER MANHOLE
[Symbol]	[Symbol]	SANITARY SEWER SERVICE
[Symbol]	[Symbol]	SECTION LINE
[Symbol]	[Symbol]	SEWER
[Symbol]	[Symbol]	SID FENCE
[Symbol]	[Symbol]	SPOT ELEVATION
[Symbol]	[Symbol]	STORM SEWER PIPE
[Symbol]	[Symbol]	STORM SEWER MANHOLE
[Symbol]	[Symbol]	TELEPHONE (UNDERGROUND)
[Symbol]	[Symbol]	TELEPHONE (OVERHEAD)
[Symbol]	[Symbol]	TREE LINE CANOPY
[Symbol]	[Symbol]	TREE/TREE TO BE REMOVED
[Symbol]	[Symbol]	UTILITY EASEMENT
[Symbol]	[Symbol]	WATER MAIN PIPE
[Symbol]	[Symbol]	WATER MAIN VALVE
[Symbol]	[Symbol]	WATER METER
[Symbol]	[Symbol]	WATER THROST BLOCK
[Symbol]	[Symbol]	WATER MAIN REDUCER
[Symbol]	[Symbol]	WATER MAIN BLOWOFF VALVE



PROJECT NO 18-015

**Bates & Associates, Inc.**  
 Civil Engineering & Surveying  
 7230 S. Pleasant Ridge Drive Phone • 479.442.9350 • Fax 479.521.9350  
 Fayetteville, Arkansas 72704

CROSS POINTE CHURCH  
 LARGE SCALE DEVELOPMENT PLAN  
 UTILITY PLAN  
 TONTITOWN, ARKANSAS

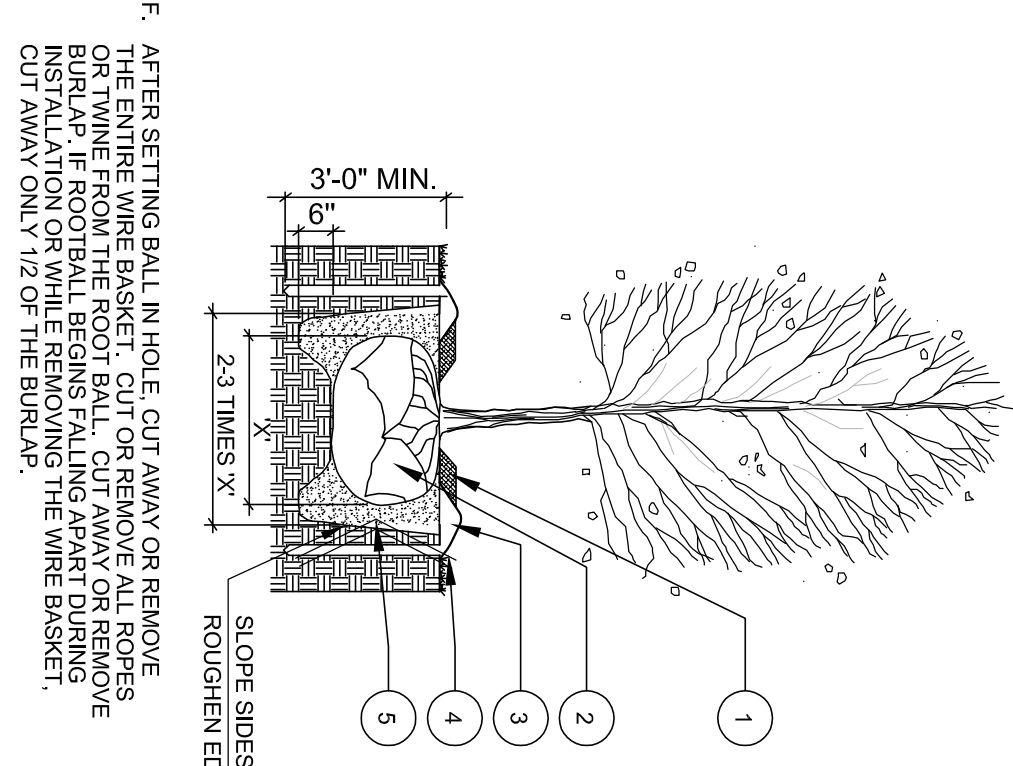
REVISIONS	DATE
BUDGET SET	03/16/18
1st SUBMITTAL	04/03/18
2nd SUBMITTAL	04/17/18

Drawn By: T. Ford  
 Engineer: G. Bates

Arkansas State Seal: REGISTERED PROFESSIONAL ENGINEER, GEOFFREY H. BATES, No. 9810

CERTIFICATE OF AUTHORIZATION, BATES & ASSOCIATES, INC., ARKANSAS

Copyright © 2018 Bates & Associates, Inc.



DECIDUOUS TREE PLANTING LEGEND

- SYMBOL DESCRIPTION
- 1 4" ORGANIC MULCH, 3'-4" AWAY FROM TRUNK
  - 2 REMOVE BALL WRAP FROM TOP 1/3 OF BALL
  - 3 ROOTBALL - ROOT COLLAR SHALL BE VISIBLE REMOVE EXCESS SOIL SETTLING
  - 4 TREE SAUCER (4" EARTHEN BERM AT EDGE OF DRIP LINE)
  - 5 EXCAVATE AND REPLACE EXISTING SOIL. ADD SOIL AMENDMENTS AS NECESSARY AS DIRECTED BY PROJECT MANAGER. WATER THOROUGHLY TO ELIMINATE AIR POCKETS. DO NOT TAMP.

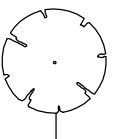
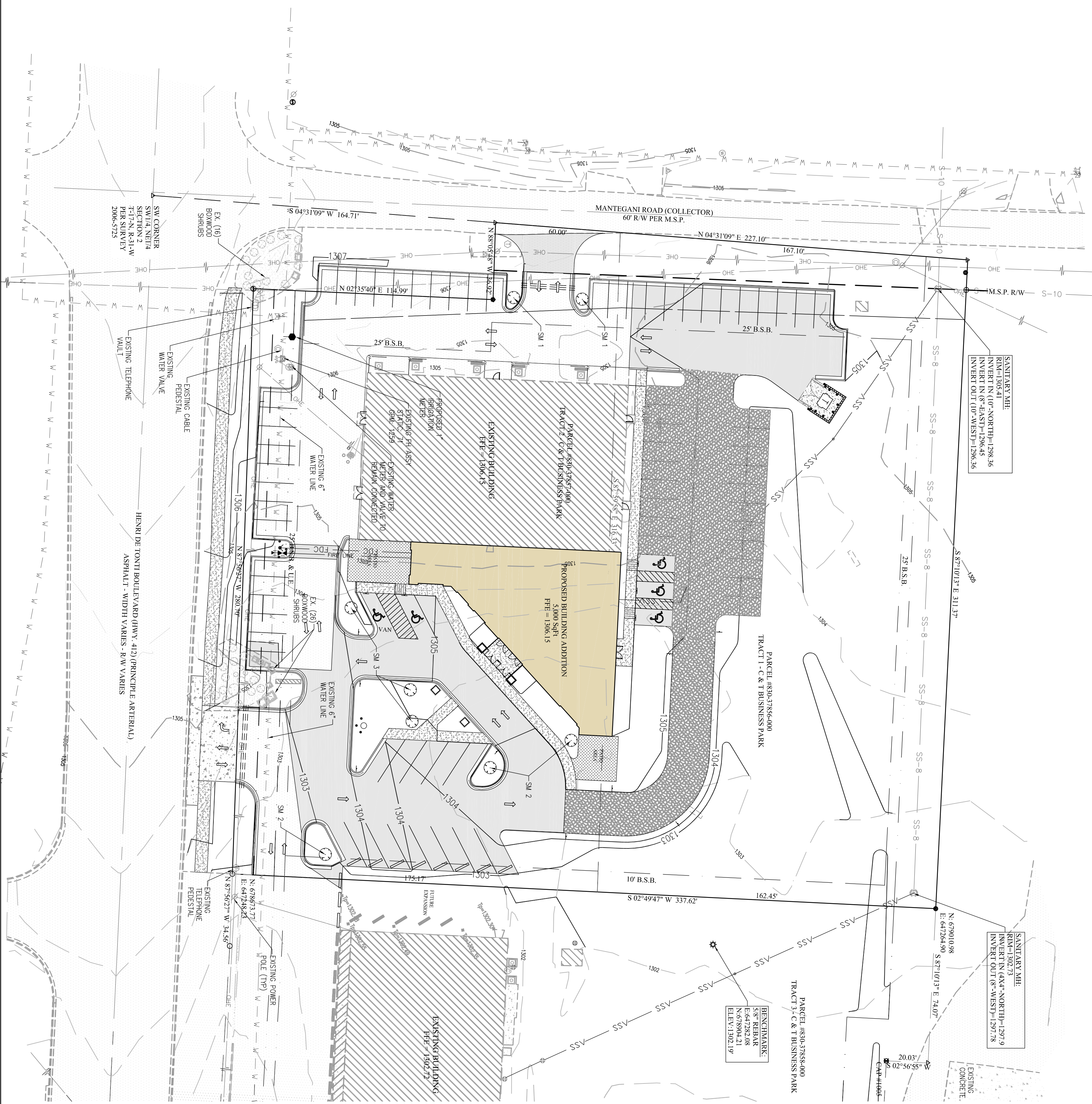
PLANTING NOTES

- A. RETAIN NATURAL SHAPE. DO NOT SHEAR OR CUT CENTRAL LEADER. TREES WITH CENTRAL LEADERS ARE NOT ACCEPTED IF LEADERS IS DAMAGED OR REMOVED.
- B. PRUNE DAMAGED TWIGS OR DOUBLE LIMBS AFTER PLANTING
- C. DO NOT WRAP IF PLANTED IN SPRING.
- D. PLACE TREE BALL ON FIRM UNDISTURBED SOIL.
- E. REMOVE ANY TWINE, ROPE, FLAGGING, WRAPPING OR GUARDS FROM THE TREE.

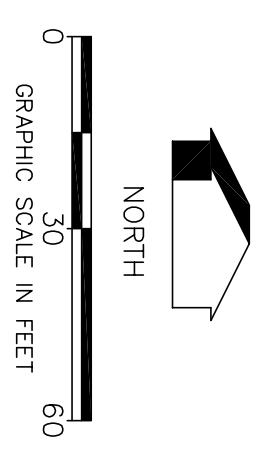
TREE PLANTING DETAIL NOTES

GENERAL LANDSCAPE NOTES

ALL PLANTING BEDS AND TREE AND SHRUB SAUCERS ARE TO HAVE 4" THICK ORGANIC MULCH EVENLY APPLIED IN PLANTING BED.  
 ALL PROPOSED PLANTING AREAS COVERED BY GRASS SHALL HAVE THE SOIL COMPLETELY REMOVED BEFORE PLANTING BEGINS.  
 PLANTING AREAS ARE TO HAVE THE SOIL AMENDED TO ALLOW FOR PROPER TREE GROWTH AS SPECIFIED BY THE LANDSCAPE ARCHITECT.  
 HOSE BIB IRRIGATION PER CITY OF TONTITOWN SPECIFICATIONS EVERY 100'.  
 REQUIRED PLANT MATERIAL WILL BE GUARANTEED FOR 3 YEARS. LANDSCAPING THAT DIES OR IS DAMAGED SHALL BE REPLACED BY THE CURRENT OWNER.  
 IT IS THE OWNER'S RESPONSIBILITY TO PROVIDE A SURETY TO THE CITY OF TONTITOWN FOR ALL REQUIRED LANDSCAPING.  
 MULCH TO BE 2"-3" AWAY FROM TRUNK.  
 PLANTED VEGETATION TO MEET OR EXCEED ANSI-Z60.1 STANDARDS.  
 ALL SHRUBS AND PLANTING BEDS WILL BE CONTAINED WITH 3" OR 4" METAL EDGING.



PLANT LIST				
QTY	SYM	COMMON NAME/ BOTANICAL NAME	ROOT MIN. SIZE	NOTES
8	SM	SUGAR MAPLE acer saccharum	4" HIGH	SMALL DECIDUOUS TREE
LANDSCAPE REQUIRED		ONE TREE OR THREE FIVE-GALLON SHRUBS FOR EACH TEN PARKING SPACES		8 TREES REQUIRED
TOTAL				8 TREES PROVIDED



PROJECT NO 18-015

**Bates & Associates, Inc.**  
 www.batesna.com  
 Civil Engineering & Surveying  
 7230 S. Pleasant Ridge Drive Phone · 479.442.9350 · Fax 479.521.9350  
 Fayetteville, Arkansas 72704

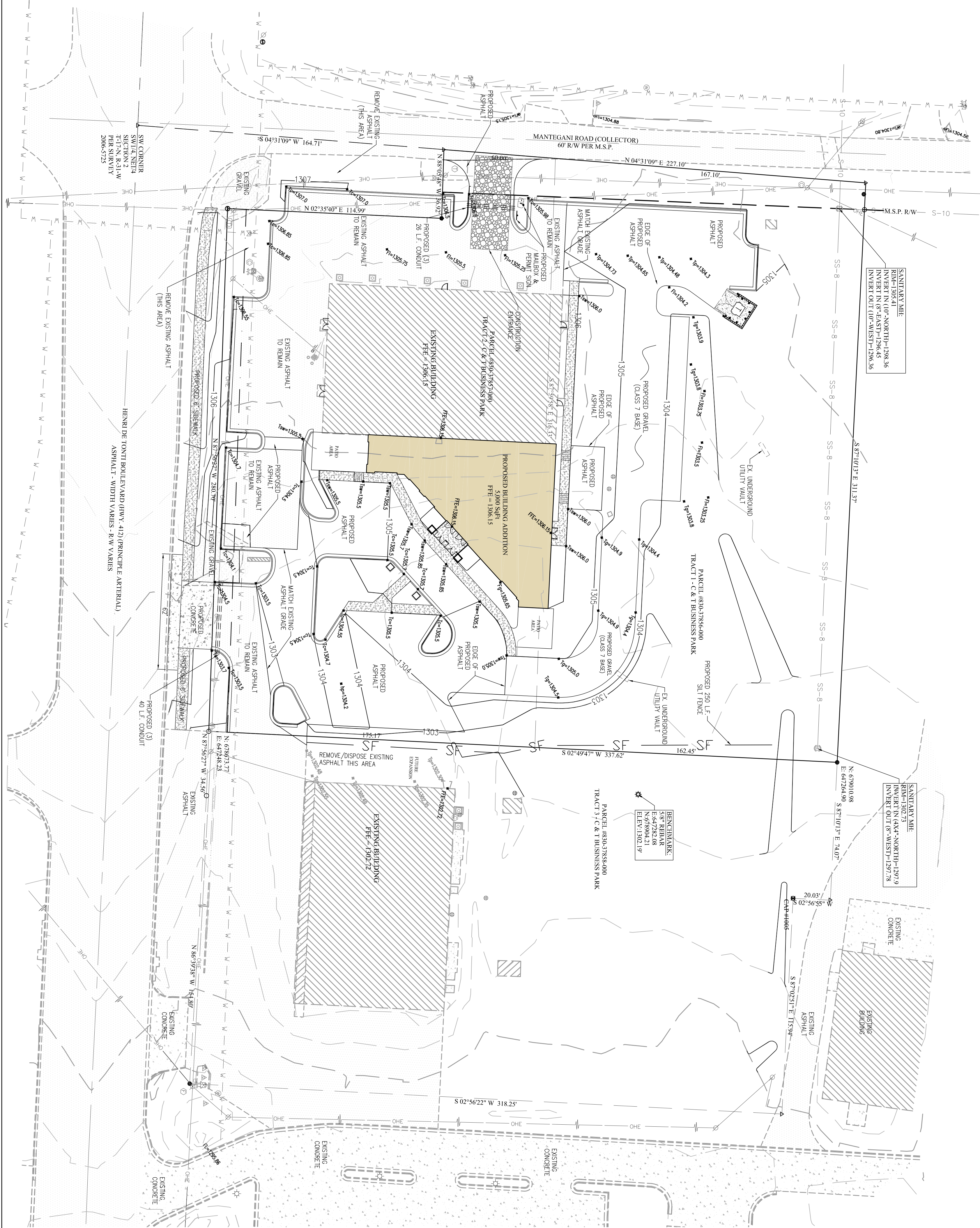
CROSS POINTE CHURCH  
 LARGE SCALE DEVELOPMENT PLAN  
 LANDSCAPE PLAN  
 TONTITOWN, ARKANSAS

REVISIONS	DATE
BUDGET SET	03/16/18
1st SUBMITTAL	04/03/18
2nd SUBMITTAL	04/17/18

DRAWN BY: T. Ford  
 ENGINEER: G. Bates

Copyright © 2018 Bates & Associates, Inc.

DATE 05

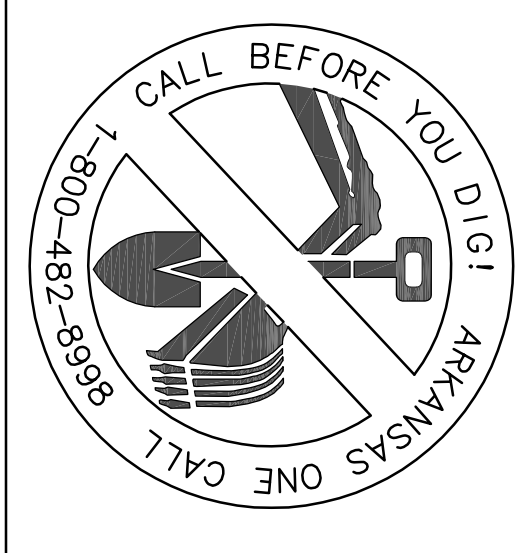


**REVEGETATION NOTES:**  
 REVEGETATION OF DISTURBED AREAS SHALL BE IN ACCORDANCE WITH THE FOLLOWING:  
 - PERMANENT IMPROVEMENTS, PERMANENT IMPROVEMENTS SUCH AS STREETS, STORM SEWERS, CURB AND GUTTERS, AND OTHER FEATURES FOR CONTROL OF RUNOFF SHALL BE SCHEDULED CONCURRENTLY TO REMOVING VEGETATION COVER FROM THE AREA SO THAT LARGE AREAS ARE NOT LEFT EXPOSED BEYOND THE CAPACITY OF TEMPORARY CONTROL MEASURES.  
 - TOP SOIL, TOP SOIL SHALL BE STOCKPILED AND PROTECTED FOR LATER USE ON AREAS REQUIRING LANDSCAPING. IF TOP SOIL OR OTHER SOIL IS TO BE STOCKPILED FOR MORE THAN 30 DAYS, A TEMPORARY COVER OF ANNUAL P.R.E. OR OTHER SUITABLE GRASS SHALL BE PLANTED.  
 - EXISTING VEGETATION, EVERY MEANS SHALL BE TAKEN TO CONSERVE AND PROJECT EXISTING VEGETATION.  
 - SEDIMENT CONTROLS SHALL REMAIN IN PLACE UNTIL RE-VEGETATION IS ESTABLISHED UNLESS OTHERWISE ALLOWED BY THE CITY.  
 - 4.1 TO 3.1 GRADE: THE SLOPE SHALL BE COVERED WITH LANDSCAPE FABRIC AND HYDRO-SEEDING WITH MULCH AND FERTILIZER, OR STATED SOIL, OR GROUND COVER. SAID PLANTING SHALL PROVIDE COMPLETE AND UNIFORM COVERAGE IN NO MORE THAN TWO GROWING SEASONS.

**CONSTRUCTION NOTES:**  
 1. ALL AREAS UNDER BUILDINGS AND PAVED AREAS SHALL BE STRIPPED OF TOPSOIL. THE RESULTING SUB GRADE SHALL BE THOROUGHLY COMPACTED. ANY SOFT OR YIELDING AREAS SHALL BE STABILIZED OR REMOVED AND REPLACED WITH SUITABLE MATERIAL.  
 2. FILL MATERIAL SHALL BE APPROVED BY THE ENGINEER. ALL FILL SHALL BE MADE IN LIFTS NOT EXCEEDING 8" THICKNESS WITH EACH LIFT COMPACTED TO 95% STANDARD PROCTOR DENSITY. FILL SLOPES SHALL NOT BE STEEPER THAN 3:1 SLOPE.  
 3. ALL GRADED AREAS SHALL HAVE 4" OF TOPSOIL, SOIL, EROSION FABRIC, HERBACEOUS GROUND COVER, AND/OR HYDROSEEDING WITH A WINTER SEASON GRASS. REVEGETATION SHALL BE IMMEDIATELY AFTER THE PHYSICAL ALTERATION OF THE LAND IS COMPLETE (MAXIMUM OF 15 DAYS).  
 4. ALL WORK SHALL BE IN ACCORDANCE WITH THE CITY GRADING REGULATIONS. SILT FENCES, BERMS, DETENTION PONS, OR OTHER MEANS NEEDED TO MEET THE CITY GRADING REQUIREMENTS SHALL BE PROVIDED AS REQUIRED TO MEET THESE REGULATIONS.  
 5. ALL HEAVILY TRAVELED DIRT AREAS SHALL BE WETTED TO PREVENT EXCESSIVE DUST DURING CONSTRUCTION.  
 6. ALL MUD/DIRT LEFT ON PUBLIC STREETS OR ADJACENT PROPERTIES AS A RESULT OF THIS CONSTRUCTION SHALL BE IMMEDIATELY SHOVELED OR SWEEP AWAY UNTIL IT IS COMPLETELY REMOVED BY THE CONTRACTOR.

**SEDIMENT & EROSION CONTROL NOTES:**  
 1. CONTRACTOR SHALL OBTAIN ALL PERMITS REQUIRED FROM A.D.E.Q. AND CITY REGARDING RUNOFF, EROSION CONTROL, AND GRADING BEFORE BEGINNING CONSTRUCTION.  
 2. CONTRACTOR SHALL POST STORM WATER POLLUTION PREVENTION PLAN.  
 3. ALL EROSION & SEDIMENT CONTROL DEVICES SHALL BE MAINTAINED AND OCCASIONALLY REPLACED THROUGHOUT THE CONSTRUCTION PROCESS.  
 4. ALL EROSION & SEDIMENT CONTROL DEVICES SHALL BE INSTALLED BEFORE CONSTRUCTION BEGINS. THOSE ITEMS SHALL REMAIN IN PLACE UNTIL ALL EXCAVATION IS COMPLETE.  
 5. THE PROPERTY OWNER OR MAIN CONTRACTOR ON SITE WILL BE RESPONSIBLE FOR RESTORING ALL EROSION AND SEDIMENT CONTROL SYSTEMS AND PUBLIC INFRASTRUCTURE DAMAGE OR DISTURBED BY UNDERGROUND PRIVATE FRANCHISED UTILITY CONSTRUCTION SUCH AS WATER AND SEWER SERVICE LINES, TELEPHONE, GAS, CABLE, ETC. EROSION AND SEDIMENT CONTROL SYSTEMS MUST BE IMMEDIATELY RESTORED AFTER EACH UTILITY CONSTRUCTION.

PROPOSED	EXISTING	DESCRIPTION
[Symbol]	[Symbol]	ASPHALT (EDGE)
[Symbol]	[Symbol]	ASPHALT (SURFACE)
[Symbol]	[Symbol]	BUILDING SETBACK LINE
[Symbol]	[Symbol]	BUILDING
[Symbol]	[Symbol]	CABLE (TV UNDERGROUND)
[Symbol]	[Symbol]	CABLE (TV OVERHEAD)
[Symbol]	[Symbol]	CENTRIFUGAL
[Symbol]	[Symbol]	CONCRETE SURFACE
[Symbol]	[Symbol]	CONTOURS
[Symbol]	[Symbol]	CURB & GUTTER
[Symbol]	[Symbol]	ELECTRICAL (UNDERGROUND)
[Symbol]	[Symbol]	ELECTRICAL (OVERHEAD)
[Symbol]	[Symbol]	ELECT. TRANSFORMER
[Symbol]	[Symbol]	EASEMENT
[Symbol]	[Symbol]	FENCE (WIRE/WOOD/CHAIN)
[Symbol]	[Symbol]	FIBER OPTIC CABLE
[Symbol]	[Symbol]	FIRE ATTENDANT ASSEMBLY
[Symbol]	[Symbol]	FOLLOWING
[Symbol]	[Symbol]	GAS MAIN
[Symbol]	[Symbol]	GAS METER
[Symbol]	[Symbol]	GRAVEL SURFACE (EDGE)
[Symbol]	[Symbol]	GRAVEL SURFACE
[Symbol]	[Symbol]	IRON PIN (5/8" RE-BAR)
[Symbol]	[Symbol]	LIGHT
[Symbol]	[Symbol]	MONUMENT (CONCRETE)
[Symbol]	[Symbol]	POND
[Symbol]	[Symbol]	POWER POLE
[Symbol]	[Symbol]	PROPERTY LINE (EXTERNAL)
[Symbol]	[Symbol]	RETAINING WALL
[Symbol]	[Symbol]	RIGHT-OF-WAY
[Symbol]	[Symbol]	SANITARY SEWER PIPE
[Symbol]	[Symbol]	SANITARY SEWER MANHOLE
[Symbol]	[Symbol]	SANITARY SEWER SERVICE
[Symbol]	[Symbol]	SECTION LINE
[Symbol]	[Symbol]	SEWER
[Symbol]	[Symbol]	SIGN FENCE
[Symbol]	[Symbol]	SPOT ELEVATION
[Symbol]	[Symbol]	STORM SEWER PIPE
[Symbol]	[Symbol]	STORM SEWER INLET
[Symbol]	[Symbol]	TELEPHONE (UNDERGROUND)
[Symbol]	[Symbol]	TELEPHONE (OVERHEAD)
[Symbol]	[Symbol]	TREE LINE (CANOPY)
[Symbol]	[Symbol]	TREE/TREE TO BE REMOVED
[Symbol]	[Symbol]	UTILITY EASEMENT
[Symbol]	[Symbol]	WATER MAIN PIPE
[Symbol]	[Symbol]	WATER VALVE
[Symbol]	[Symbol]	WATER METER
[Symbol]	[Symbol]	WATER THROST BLOCK
[Symbol]	[Symbol]	WATER MAIN REDUCER
[Symbol]	[Symbol]	WATER MAIN BLOWOFF VALVE



PROJECT NO: 18-015  
 DATE: 06

**Bates & Associates, Inc.**  
 Civil Engineering & Surveying  
 www.bateswa.com  
 7230 S. Pleasant Ridge Drive Phone • 479.442.9350 • Fax 479.521.9350  
 Fayetteville, Arkansas 72704

CROSS POINTE CHURCH  
 LARGE SCALE DEVELOPMENT PLAN  
 GRADING, DRAINAGE &  
 EROSION CONTROL PLAN  
 TONTITOWN, ARKANSAS

REVISIONS	DATE
BUDGET SET	03/16/18
1st SUBMITTAL	04/03/18
2nd SUBMITTAL	04/17/18

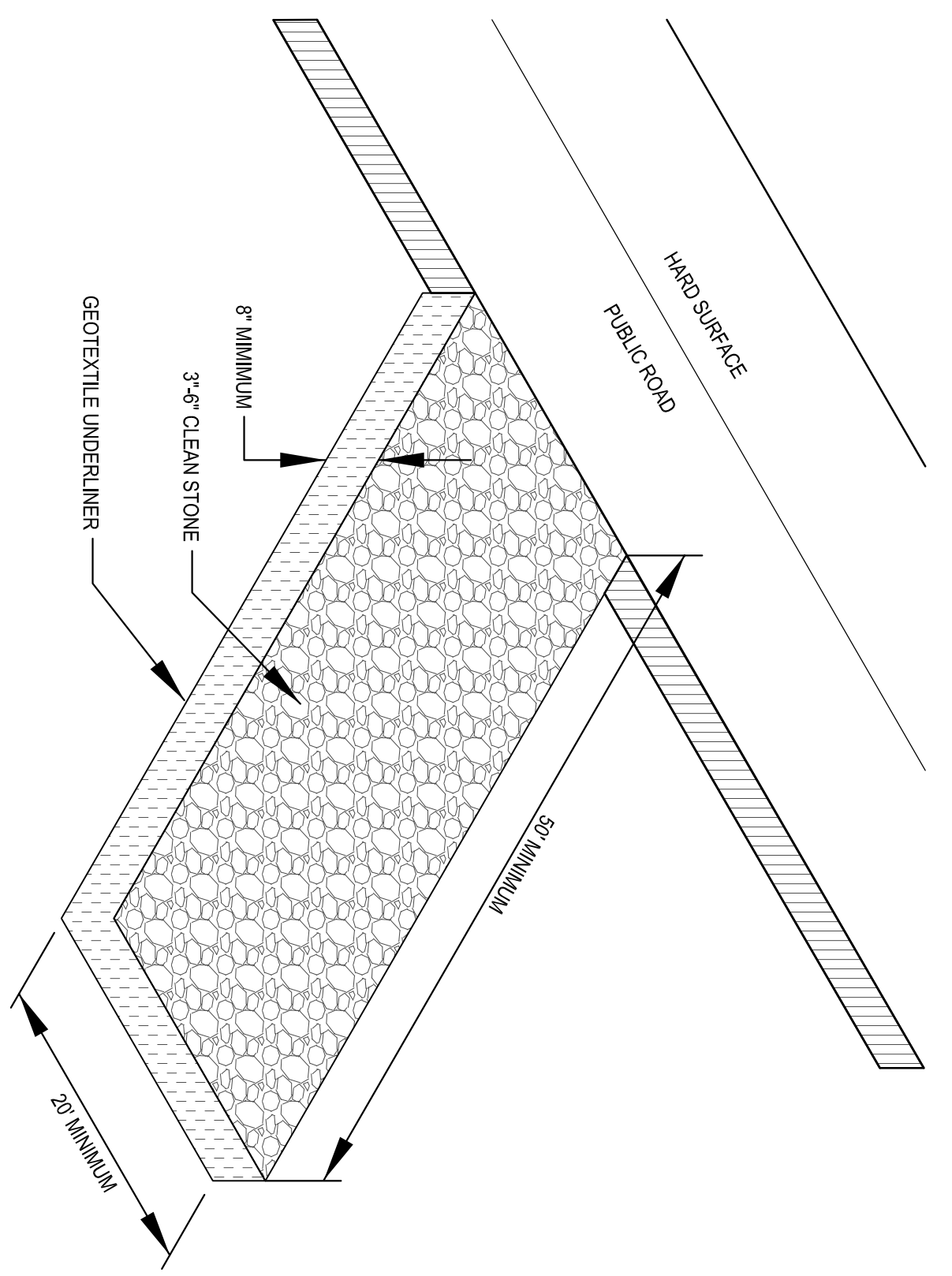
DRAWN BY: T. Ford  
 ENGINEER: G. Bates

**ARKANSAS REGISTERED PROFESSIONAL ENGINEER**  
 No. 9810  
 JOSEPH H. BATES

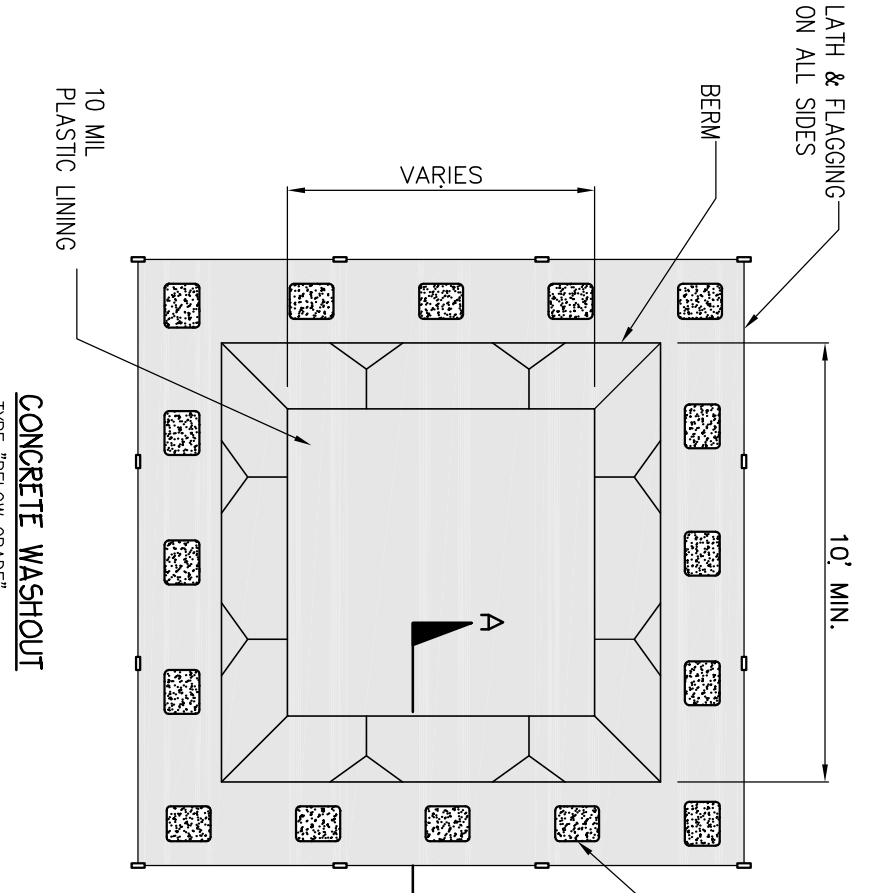
**CERTIFICATE OF AUTHORIZATION**  
 BATES & ASSOCIATES, INC.  
 No. 4355

Copyright © 2018 Bates & Associates, Inc.

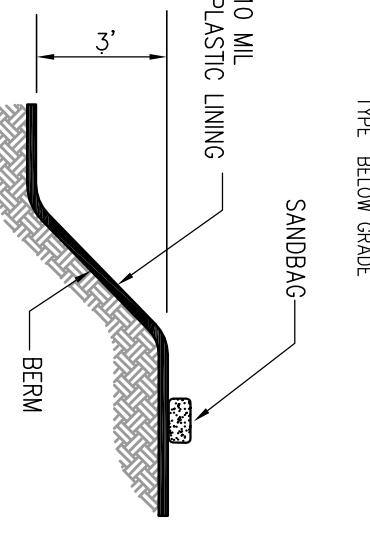
- CONSTRUCTION EXIT NOTES**
1. REPLACE CONTAMINATED STONE AS REQUIRED TO PREVENT TRACKING OF SEDIMENT OR MUD ON PUBLIC STREETS.
  2. CLEAN STREETS DAILY WITH BROOM AND SHOVEL. THE USE OF WATER IS PROHIBITED.
  3. ALL VEHICLES MUST USE CONSTRUCTION EXIT.



**CONSTRUCTION EXIT**  
 N.T.S.

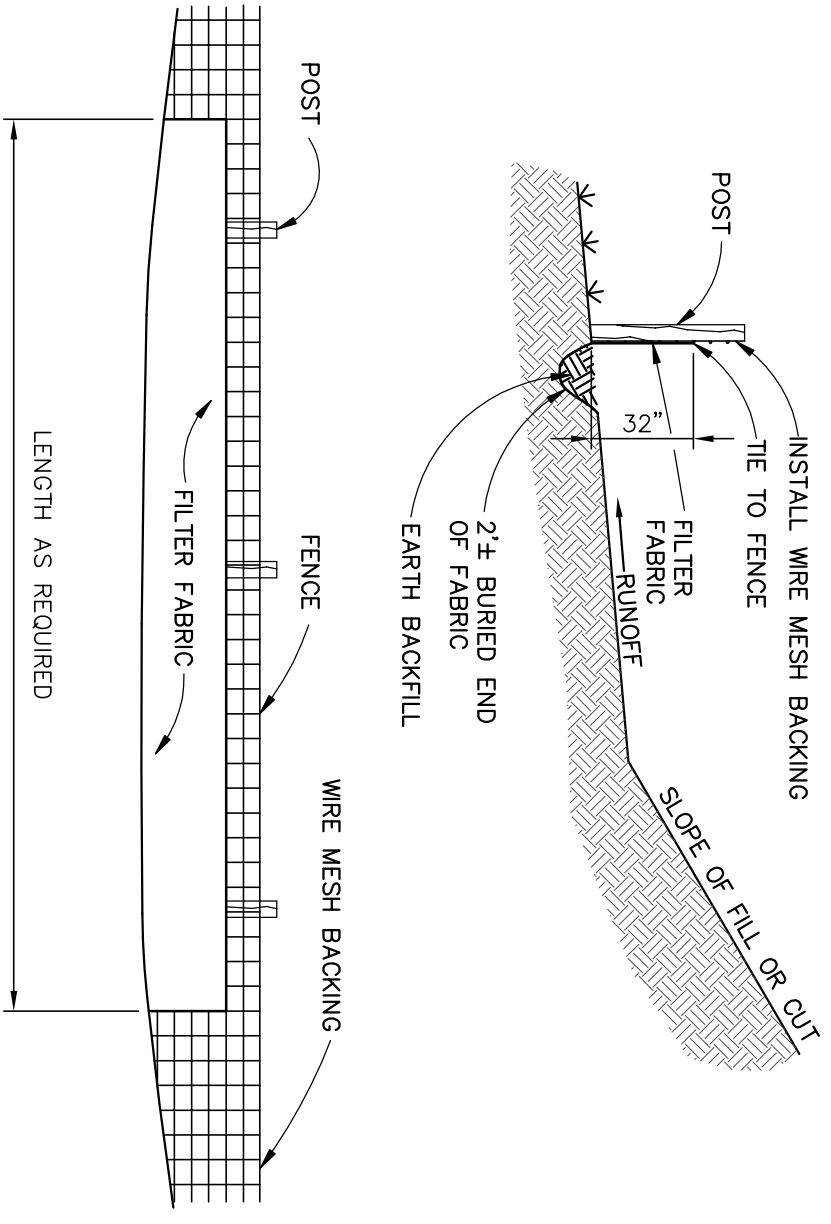
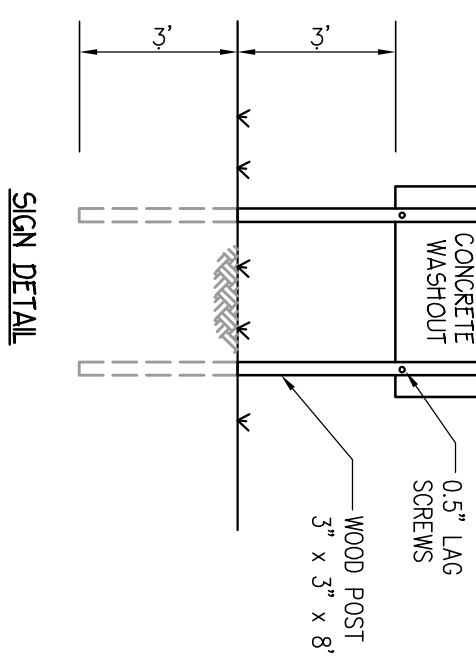


- NOTES**
1. WASH OUT OF CONCRETE TRUCKS OR WASHING OF SHEETINGS FROM EXPOSED AGGREGATE CONCRETE INTO STORM DRAINS, OPEN DITCHES, STREETS, OR STREAMS IS ALLOWED.
  2. EXCESS CONCRETE IS NOT ALLOWED TO BE DUMPED ON-SITE, EXCEPT IN DESIGNATED TEMPORARY CONCRETE WASHOUT PIT.
  3. ON-SITE TEMPORARY CONCRETE WASHOUT AREAS WILL BE LOCATED AT LEAST 50 FEET FROM STORM DRAINS, OPEN DITCHES, OR WATER BODIES AS DETERMINED IN THE FIELD.
  4. THE CONCRETE WASHOUT SIGN SHALL BE INSTALLED WITHIN 30 FT. OF THE CONCRETE WASHOUT AREA.
  5. TEMPORARY CONCRETE WASHOUT FACILITIES SHALL BE CONSTRUCTED AND MAINTAINED IN SUFFICIENT QUANTITY AND SIZE TO CONTAIN ALL LIQUID AND CONCRETE WASTE GENERATED BY WASHOUT OPERATIONS.
  6. WASHOUT FACILITIES WILL BE CLEANED OUT ONCE THE WASHOUTS ARE COMPLETE.
  7. PLASTIC LINING MATERIAL WILL BE MINIMUM OF 10 MIL POLYETHYLENE SHEETING AND WILL BE FREE OF HOLES, TEARS, OR OTHER DEFECTS.
  8. WHEN WASHOUT FACILITIES ARE NO LONGER REQUIRED FOR WORK, MATERIALS USED TO CONSTRUCT TEMPORARY CONCRETE WASHOUT FACILITIES WILL BE REMOVED FROM THE SITE AND DISPOSED OF PROPERLY.

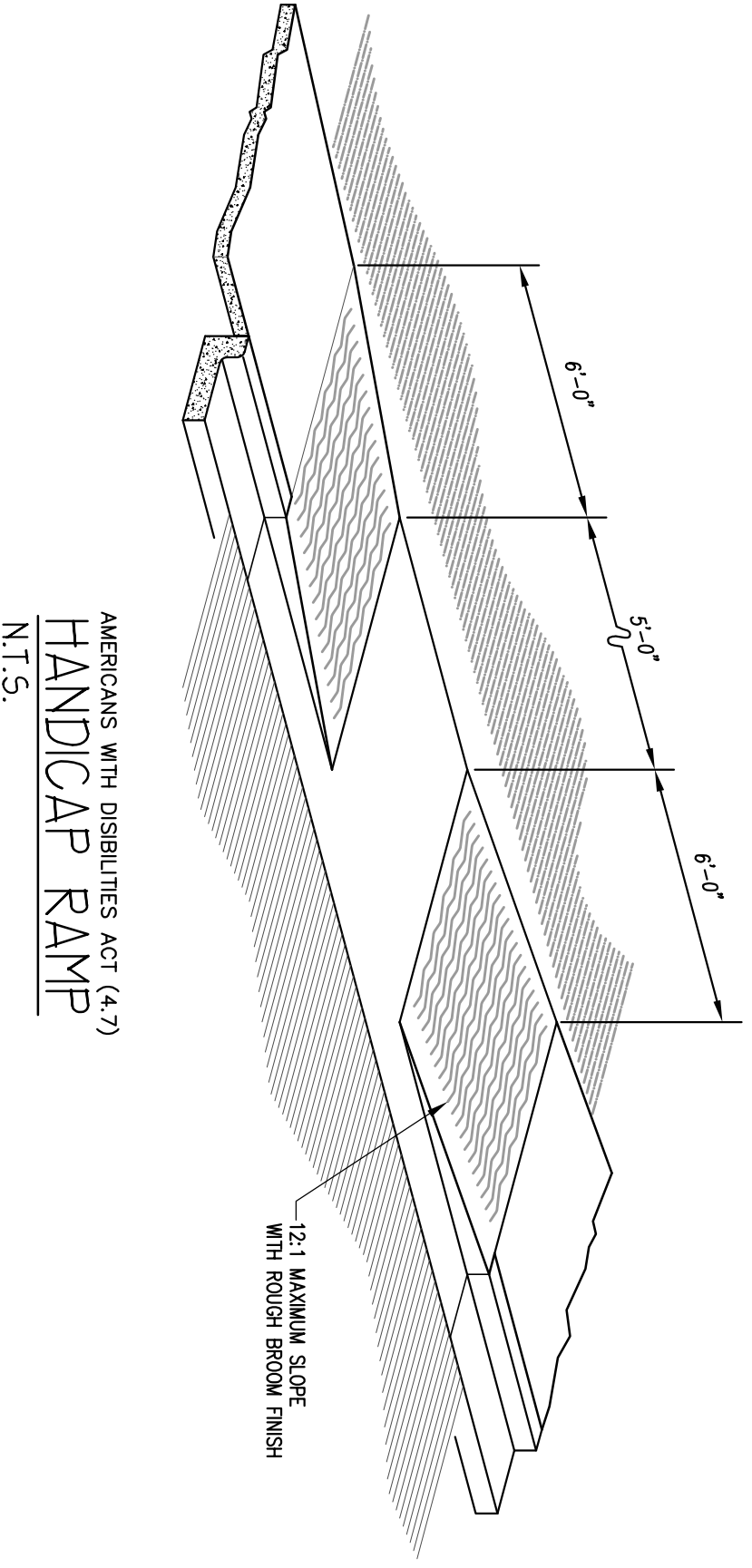


**SECTION A-A**

**CONCRETE WASTE MANAGEMENT DETAIL**  
 N.T.S.

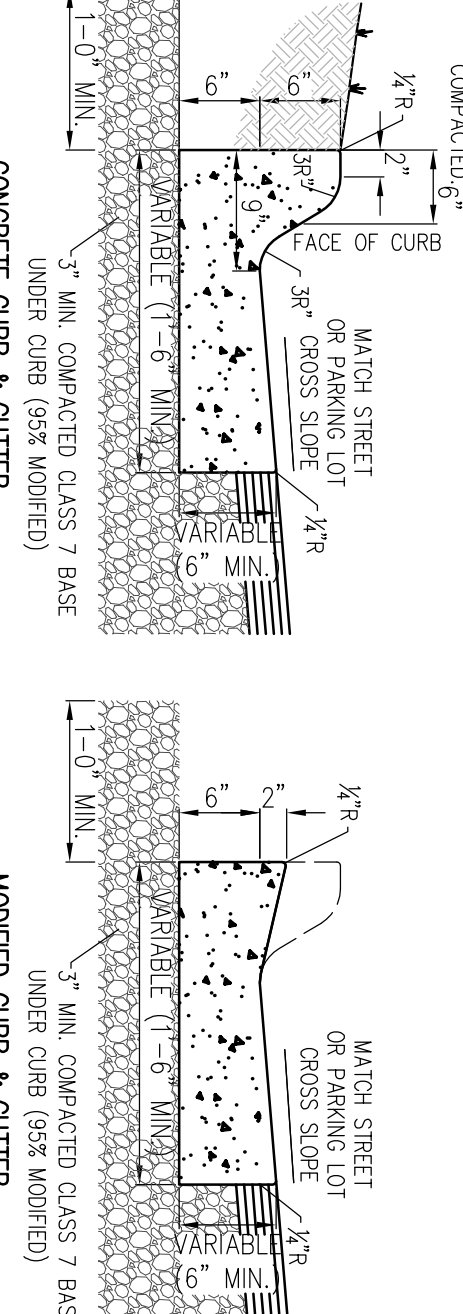


**FILTER FABRIC BARRIER (SILT FENCE)**  
 N.T.S.

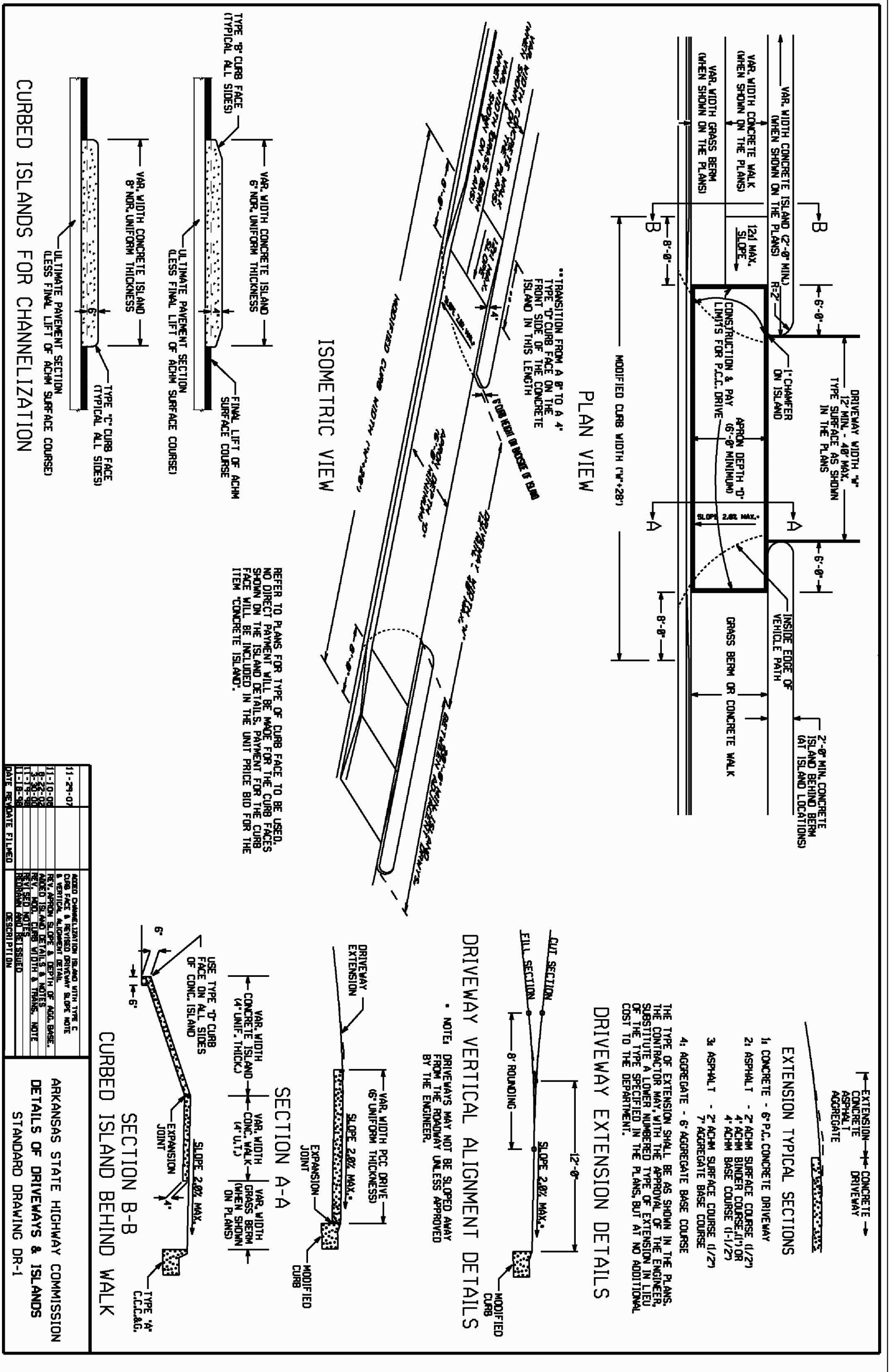


**AMERICANS WITH DISABILITIES ACT (ADA) HANDICAP RAMP**  
 N.T.S.

- NOTES**
1. CONCRETE FOR CURB AND GUTTER TO BE CLASS A, 3500 PSI, 5.5 BAG MIX WITH 4-7% AIR ENTRAINMENT.
  2. ALL CURB AND GUTTER SHALL HAVE A BROOMED FINISH UNLESS OTHERWISE SPECIFIED.
  3. CURB AND GUTTER SHALL BE 1'-0\"/>



**CURB AND GUTTER DETAILS**  
 N.T.S.



**DRIVEWAY EXTENSION DETAILS**

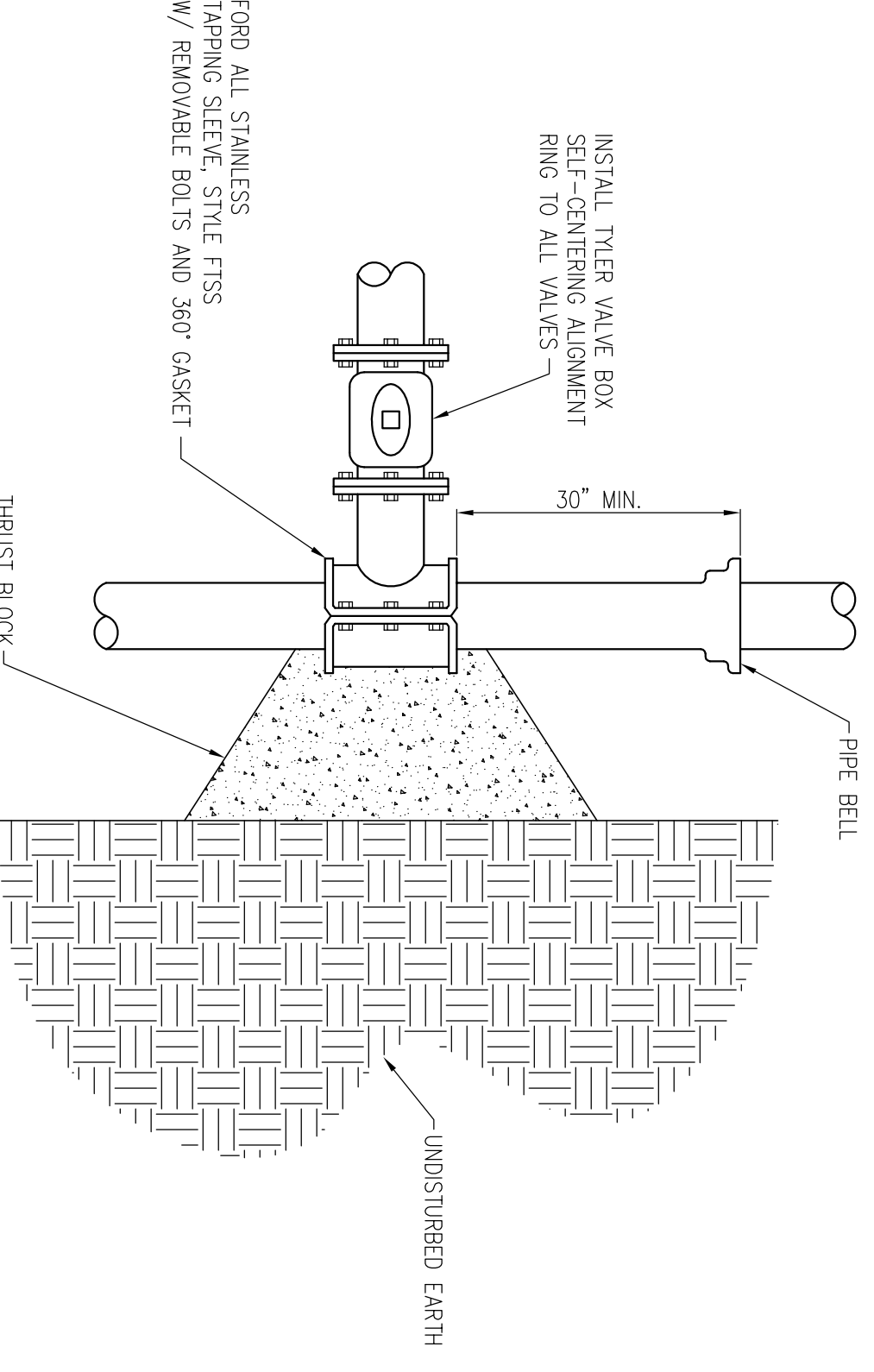
**DRIVEWAY VERTICAL ALIGNMENT DETAILS**

**SECTION A-A**

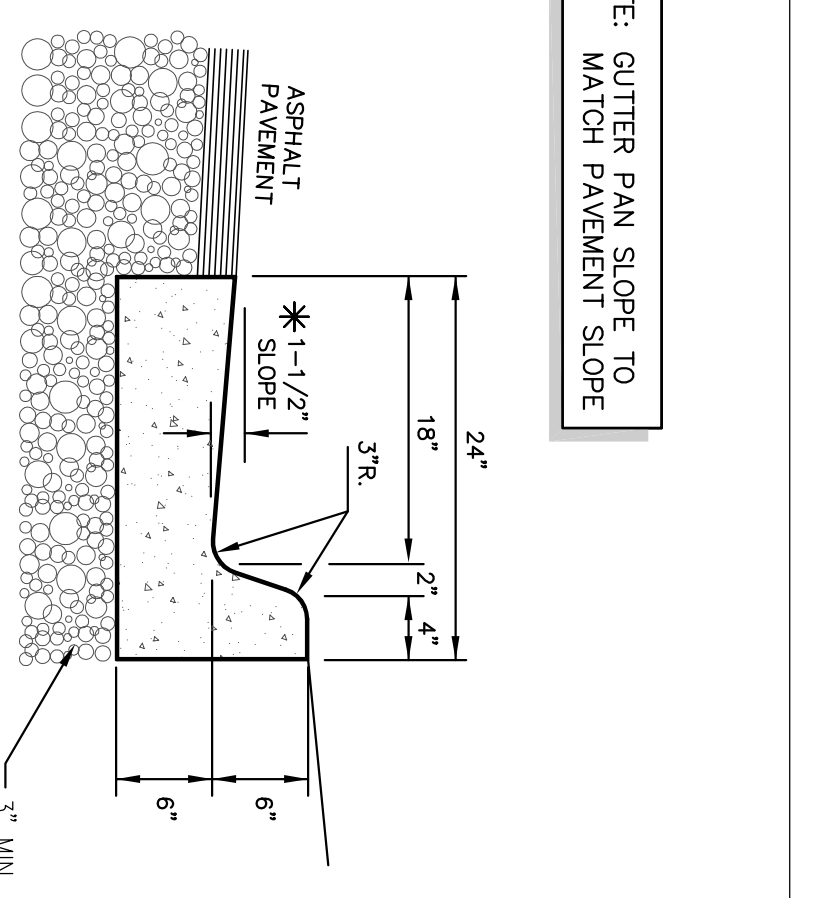
**SECTION B-B**

**CURBED ISLANDS FOR CHANNELIZATION**

**ARKANSAS STATE HIGHWAY COMMISSION DETAILS OF DRIVEWAYS & ISLANDS STANDARD DRAWING DR-1**



**FORD STAINLESS STEEL TAPPING SLEEVE + VALVE**  
 N.T.S.



**TYPICAL CURB SECTION**  
 N.T.S.

REVISIONS	DATE
BUDGET SET	03/16/18
1st SUBMITTAL	04/03/18
2nd SUBMITTAL	04/17/18

DRAWN BY: T. Ford  
 ENGINEER: G. Bates

**CERTIFICATE OF AUTHORIZATION**  
 REGISTERED PROFESSIONAL ENGINEER  
 NO. 9810  
 JOSEPH H. BATES

Copyright © 2018 Bates & Associates, Inc.

CROSS POINTE CHURCH  
 LARGE SCALE DEVELOPMENT PLAN

SITE DETAILS

TONTITOWN, ARKANSAS

**Bates & Associates, Inc.**  
 Civil Engineering & Surveying

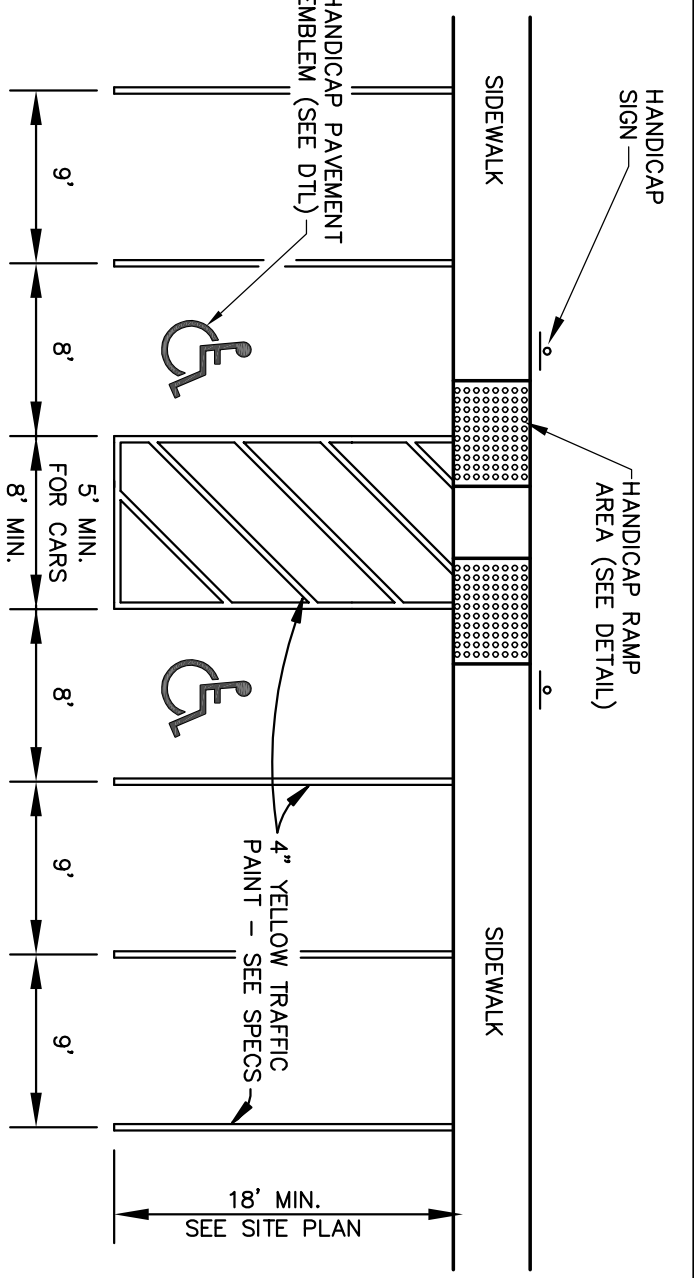
7230 S. Pleasant Ridge Drive Phone • 479.442.9350 • Fax 479.521.9350  
 Fayetteville, Arkansas 72704

PROJECT NO 18-015

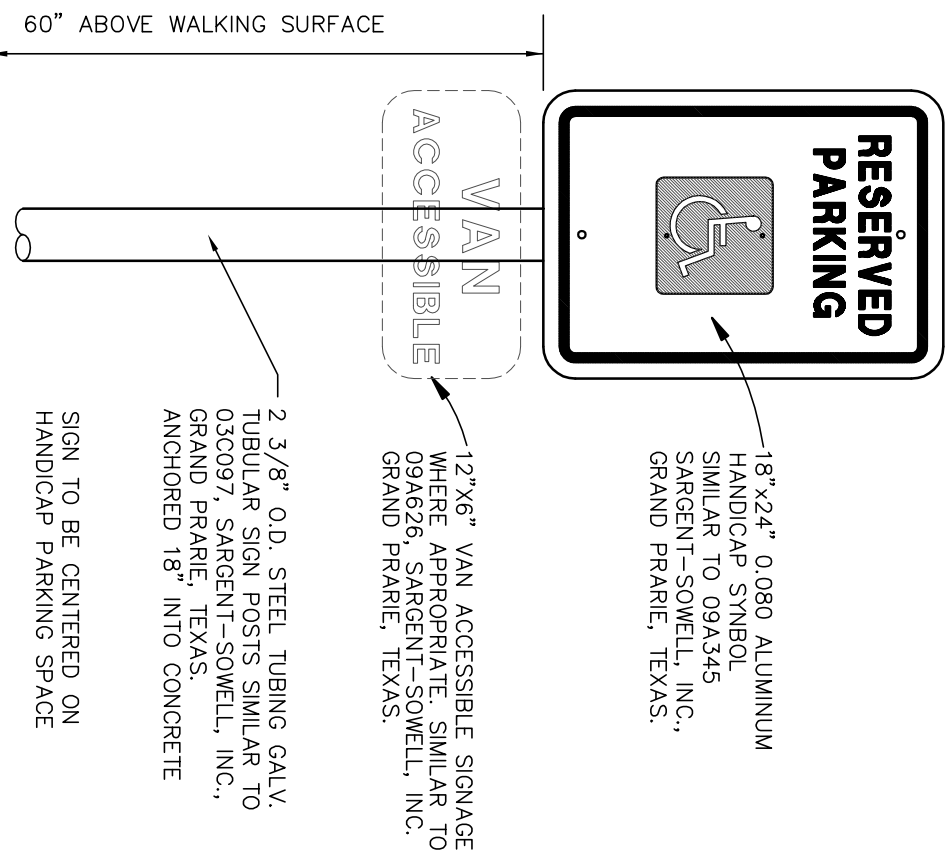
DATE 07

TOTAL NUMBER OF SPACES PROVIDED (PER LOT)	TOTAL MINIMUM PARKING SPACES ACCESSIBLE (60' & 96' ASSES)	VAN ACCESSIBLE WITH WIDE ACCESS
1 to 25	1	1
26 to 50	2	1
51 to 75	3	1
76 to 100	4	1
101 to 150	5	1
151 to 200	6	1
201 to 300	7	1
301 to 400	8	1
401 to 500	9	2
501 to 1000	2% of total parking provided in each lot	1/8 of Column A*
1001 and over	20 plus 1 for each 100 over 1000	1/8 of Column A*

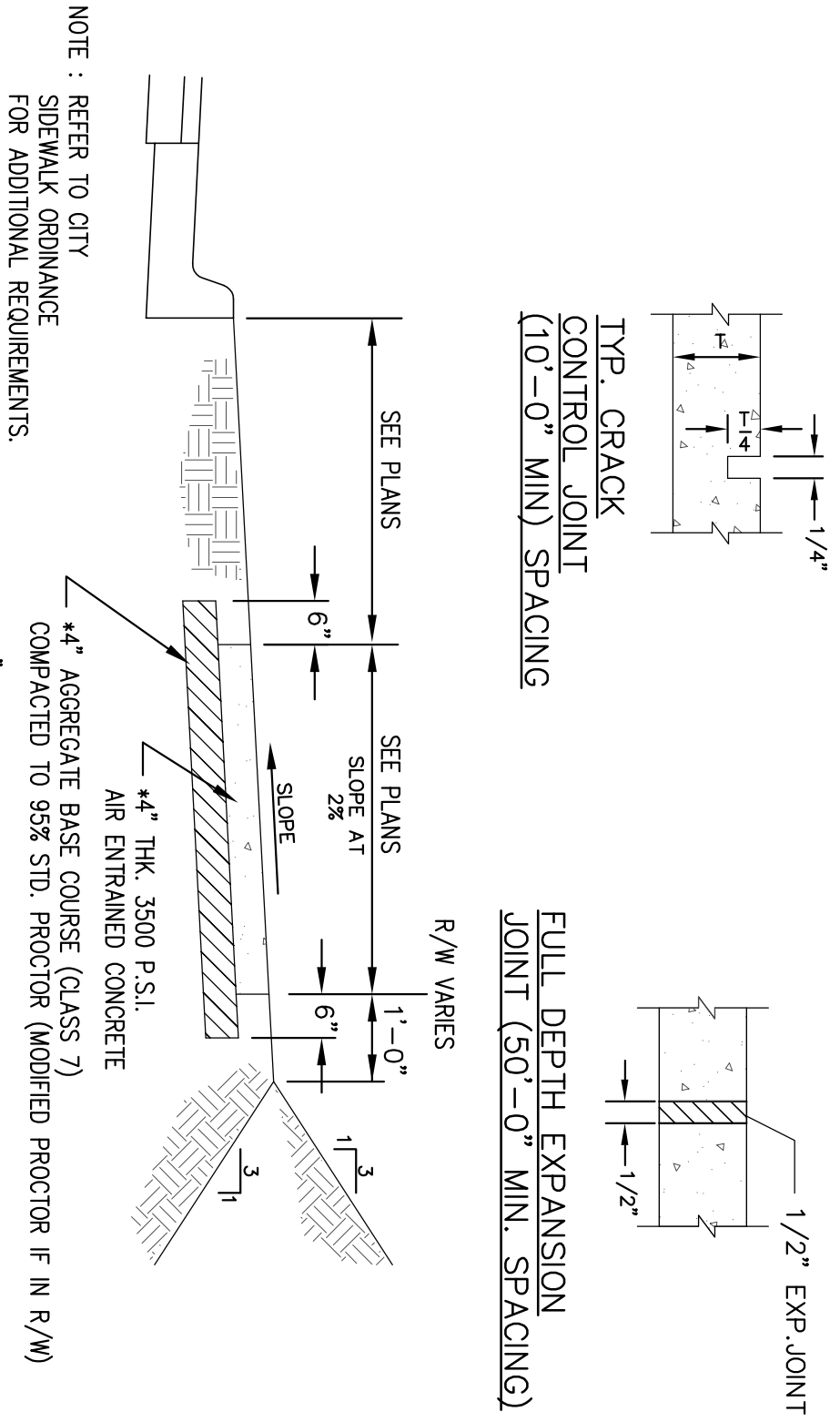
\* ONE OUT OF EVERY 8 ACCESSIBLE SPACES



TYP. PARKING STRIPING LAYOUT  
 N.T.S.



AMERICANS WITH DISABILITIES ACT (46.4)  
 HANDICAP SIGN  
 N.T.S.



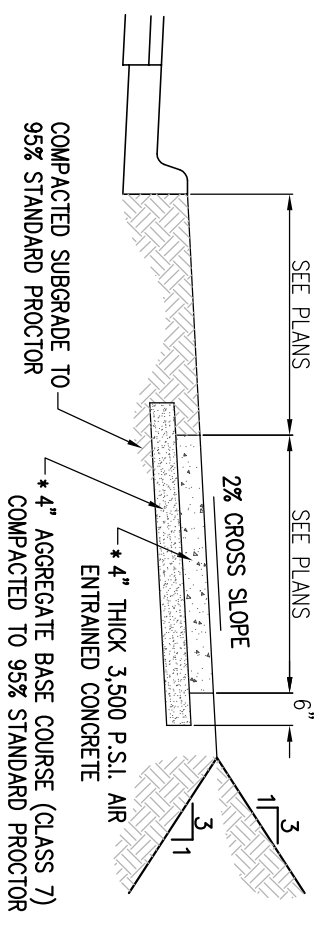
TYP. CRACK CONTROL JOINT (10'-0" MIN. SPACING)

FULL DEPTH EXPANSION JOINT (50'-0" MIN. SPACING)

TYPICAL SECTION OF SIDEWALK  
 SIDEWALK DETAIL (STREET)  
 N.T.S.

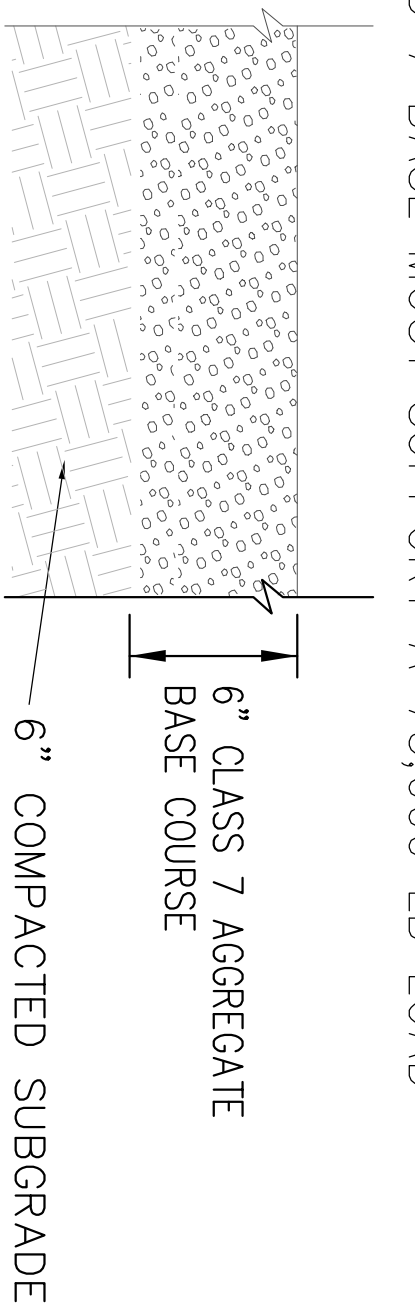
- NOTES:
- CONCRETE FOR SIDEWALKS TO BE CLASS A, 3500 P.S.I., 5.5 BAG MIX WITH 4% AIR ENTRAINMENT.
  - SEWERS SHALL HAVE A BROOKED FINISH UNLESS OTHERWISE SPECIFIED.
  - SIDEWALKS MUST HAVE CONTRACTION JOINTS SPACED EVERY 5 FEET ON CENTER, AND SHALL BE SAWS TO A DEPTH OF 1-1/2" WITH A WIDTH OF 5/8" AND STANDARD SPECIFICATIONS OR AS APPROVED BY THE ENGINEER (MINIMUM 50 OR EQUAL).
  - EXPANSION JOINTS SHALL BE PROVIDED AT 25 FOOT INTERVALS, AT ALL SPOTWELDING JOINTS SUCH AS DRIVES, AND AT CORNER JOINTS. JOINTS SHALL BE A THICKNESS OF 1/2" AND COMPACT TO MATCH WITH STANDARDS.
  - ALL SIDEWALKS SHALL BE CURED WITH A CURING COMPOUND OR WITH MET BRUSH TREATMENT AND CONSTRUCTION SHALL COMPLY WITH CITY REQUIREMENTS. IN THE CASE OF CONFLICTS, THE CITY'S CRITERIA SHALL GOVERN.

FULL DEPTH EXPANSION JOINT (25'-0" MIN. SPACING)

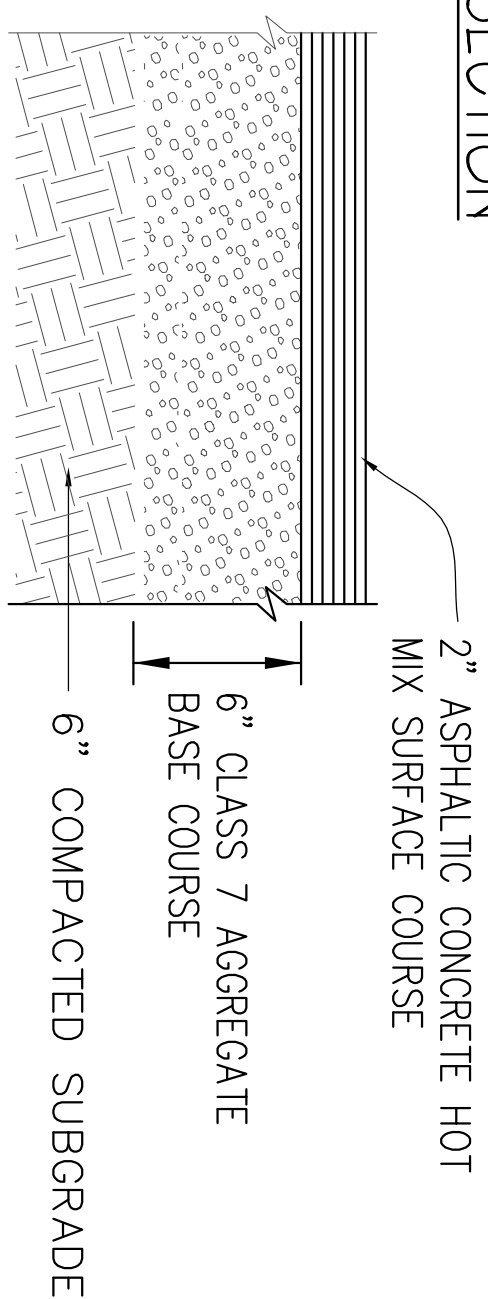


TYPICAL SECTION OF SIDEWALK  
 SIDEWALK DETAIL  
 N.T.S.

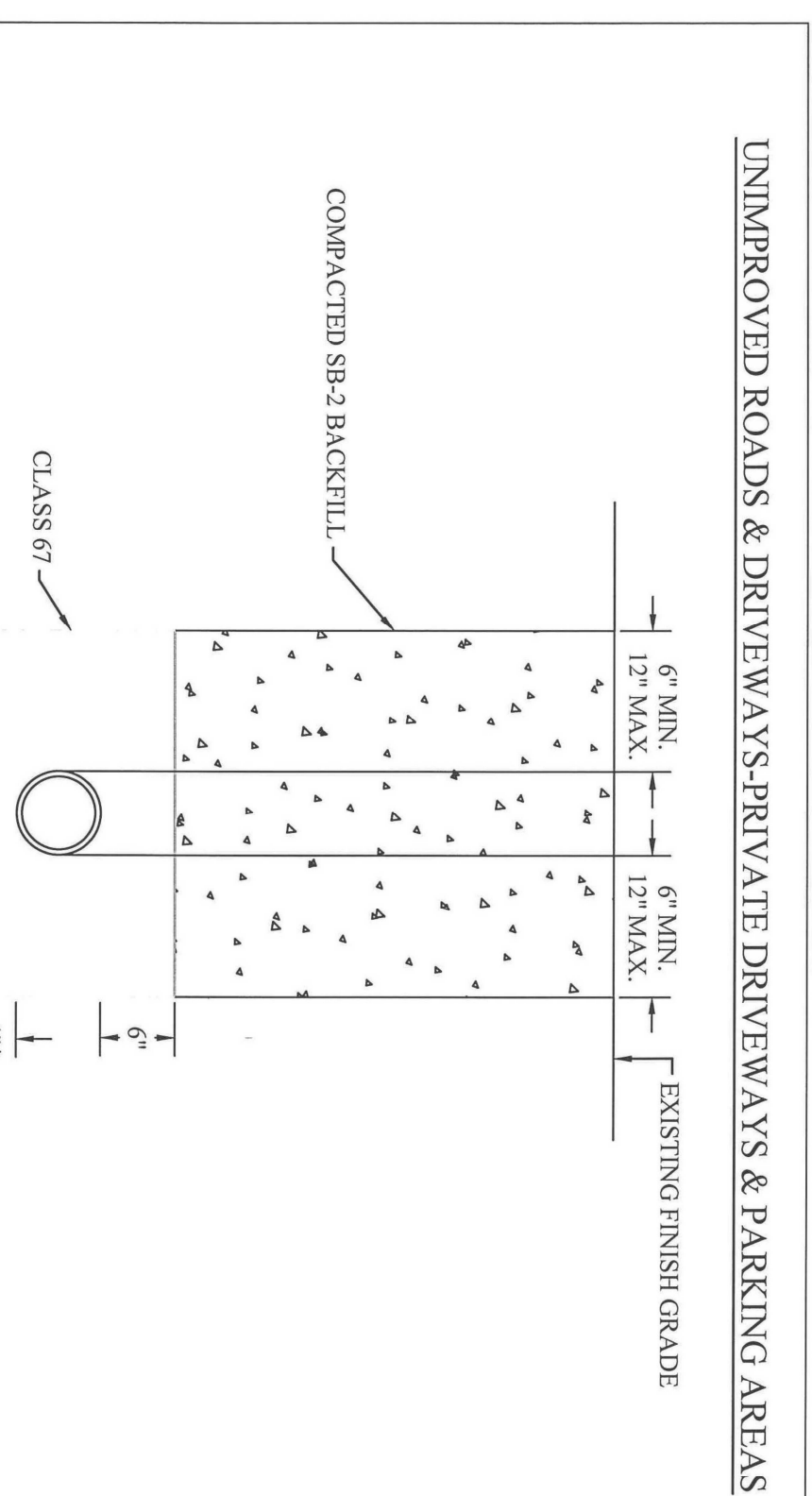
NOTE:  
 CLASS 7 BASE MUST SUPPORT A 75,000 LB LOAD



GRAVEL PARKING + DRIVE SECTION

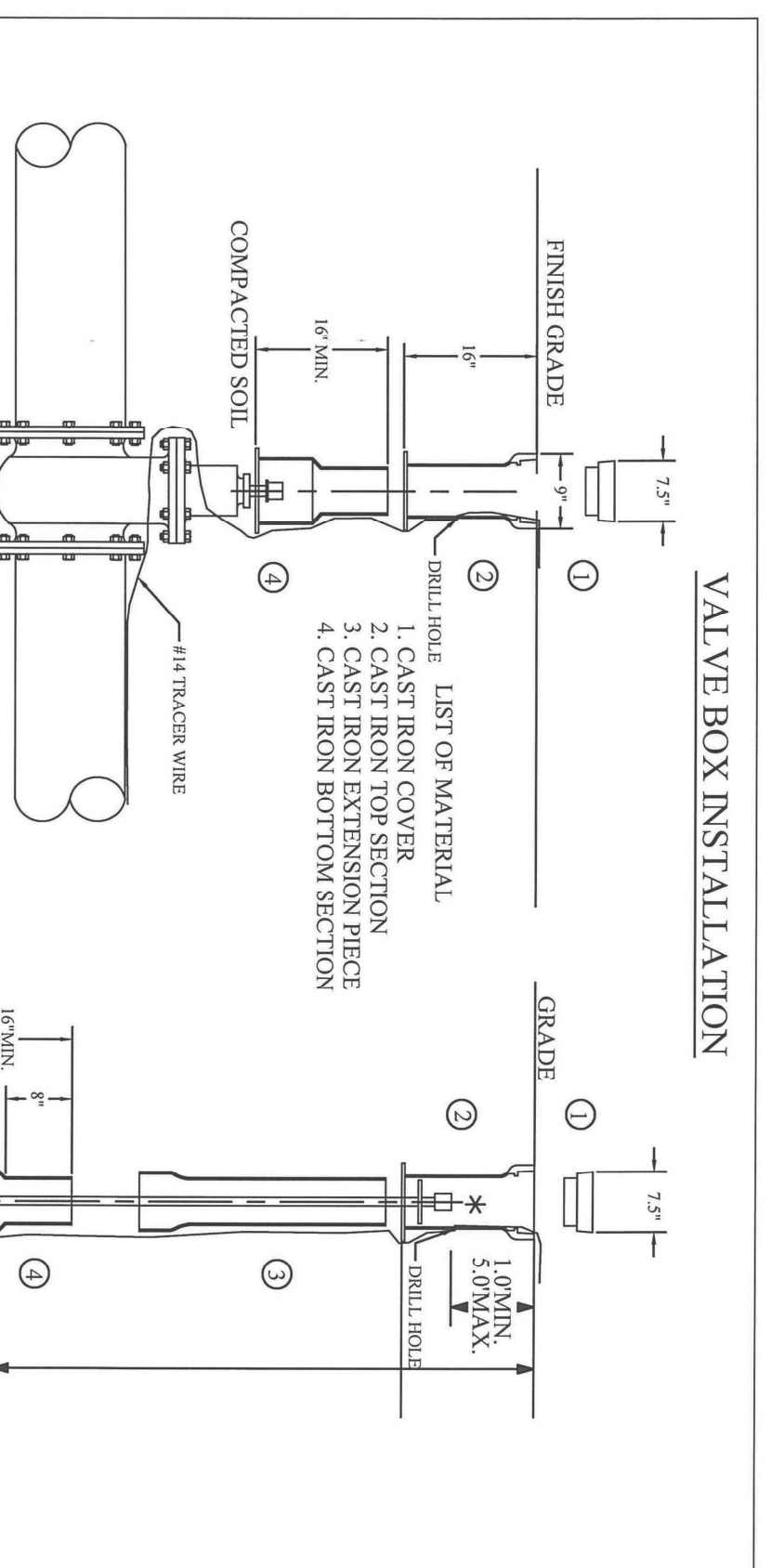


LIGHT DUTY ASPHALT



- \*\* IF IN ROCK 6" MIN. CLASS #67 STONE REQUIRED.  
 \*\* IMPROVED PRIVATE DRIVEWAYS AND PARKING AREAS BACKFILLED AS SHOWN ABOVE. SUBSURFACE MATERIAL TO EQUAL OR EXCEED EXISTING SURFACE. ASPHALTIC CONCRETE WALKS - MINIMUM THICKNESS 4". CONCRETE DRIVES OR PARKING AREAS - MINIMUM THICKNESS 6".  
 NOTE: PRIVATE PARKING AREAS, DRIVEWAYS & WALKS-SEE UNIMPROVED ROADS

CITY OF TONTITOWN  
 GEN. WATERSHEBER DETAIL, GWSB9  
 DRAWN BY: CHB  
 CHECKED BY: \_\_\_\_\_  
 APPROVED: \_\_\_\_\_  
 DATE: 08/07/06



- NOTES:
- IF EXTENSION PIECE IS USED, ANOTHER VALVE BOX BOTTOM SECTION SHALL BE USED.
  - EXTENSION PIECE CAN BE CUT TO LENGTH REQUIRED.
  - SINGLE #14 GAUGE TYPE INSULATED COPPER TRACER SERVICES FOR OTHER APPLICATIONS.
  - PROVIDE VALVE STEM EXTENSION WITH CENTERING DEVICE IF GREATER THAN 4" DEEP.

CITY OF TONTITOWN  
 WATER DETAIL, WAT  
 DRAWN BY: CHB  
 CHECKED BY: \_\_\_\_\_  
 APPROVED: \_\_\_\_\_  
 DATE: 08/07/06

CROSS POINTE CHURCH  
 LARGE SCALE DEVELOPMENT PLAN  
 SITE DETAILS  
 TONTITOWN, ARKANSAS

REVISIONS	DATE
BUDGET SET	03/16/18
1st SUBMITTAL	04/03/18
2nd SUBMITTAL	04/17/18

DRAWN BY: T. Ford  
 ENGINEER: G. Bates

Copyright © 2018 Bates & Associates, Inc.

**Bates & Associates, Inc.**  
 Civil Engineering & Surveying  
 7230 S. Pleasant Ridge Drive Phone • 479.442.9350 • Fax 479.521.9350  
 Fayetteville, Arkansas 72704