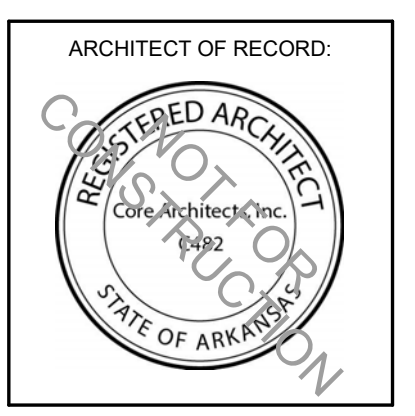
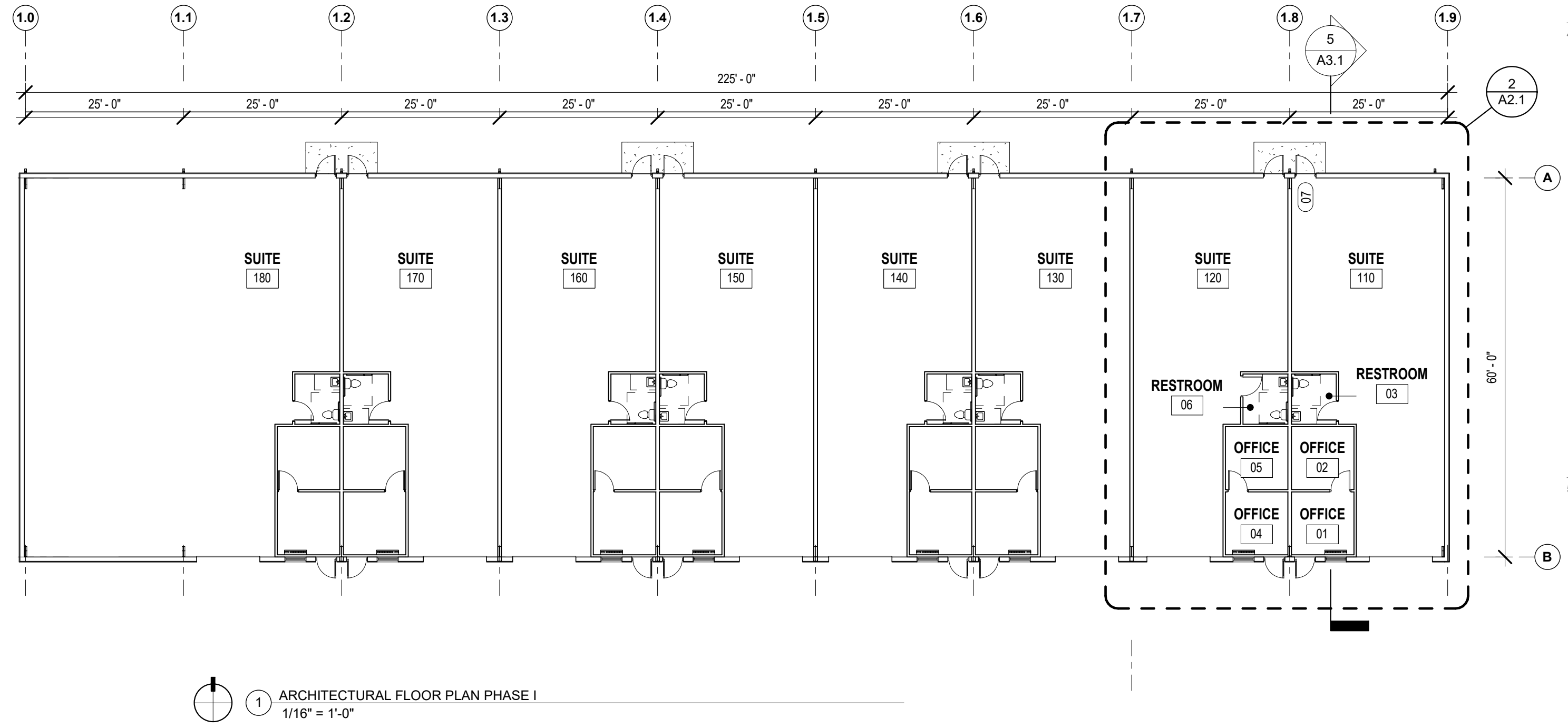


RESTROOM LEGEND	
GB-1:	GRAB BAR 36"L. X 1-1/2"DIA.
GB-2:	GRAB BAR 42"L. X 1-1/2"DIA.
M1:	24"W x 36"H MIRROR
TT:	SURFACE MOUNTED TOILET TISSUE DISPENSER
PTD:	SURFACE MOUNTED PAPER TOWEL DISPENSER
SD:	SURFACE MOUNTED SOAP DISPENSER



REVISION		
NO.	ISSUE	DATE

CONSULTANT:

CASALINI COURT PHASE II

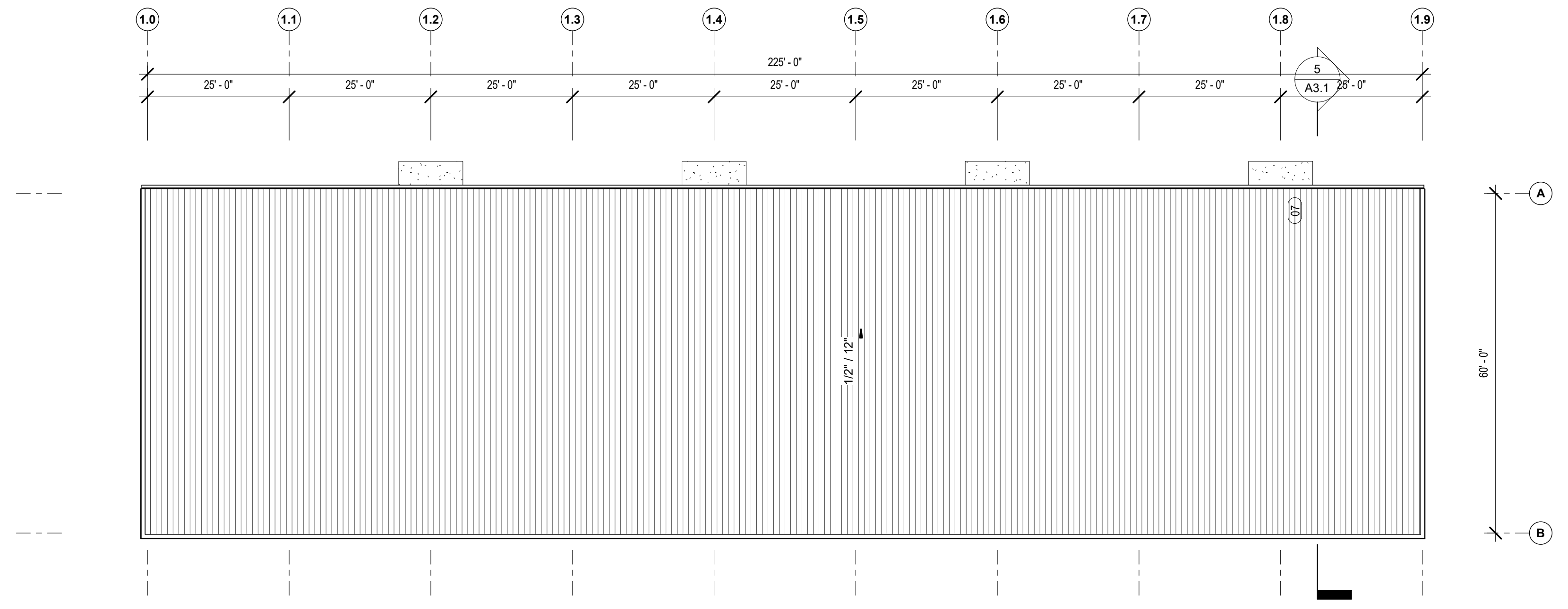
992 E. HENRI DE TONTI BLVD.
TONTITOWN, ARKANSAS 72762

DRAWN BY:
GON
CHECKED BY:
DG

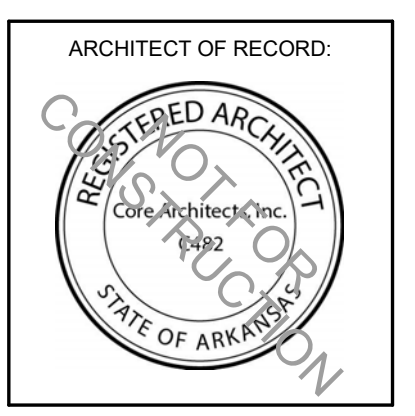
PROJECT #:
19-014

DATE:
2019.03.25

DRAWING:
A2.1
ARCHITECTURAL
FLOOR PLAN(S)



1 ROOF PLAN PHASE I
1/16" = 1'-0"



REVISION		
NO.	ISSUE	DATE

CONSULTANT:

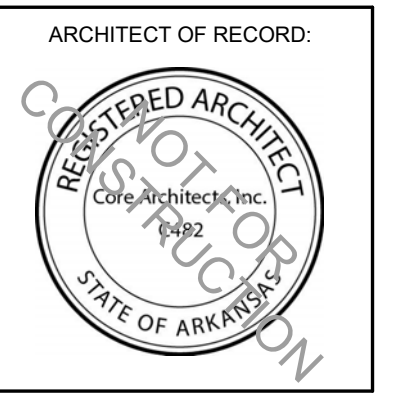
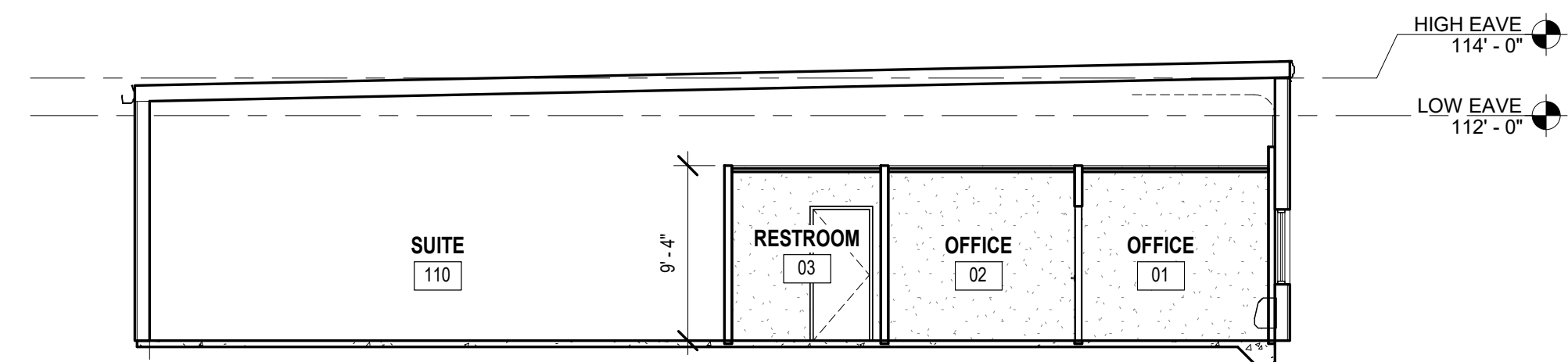
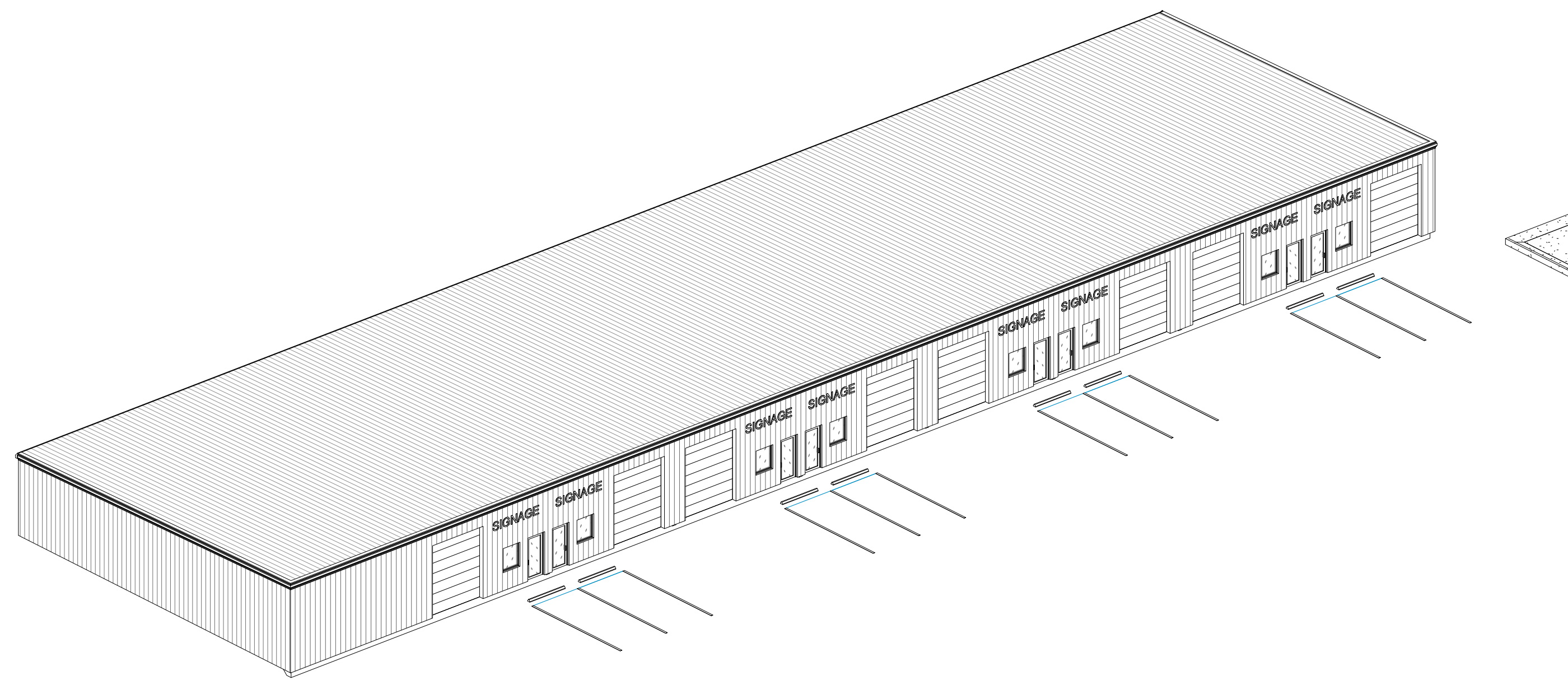
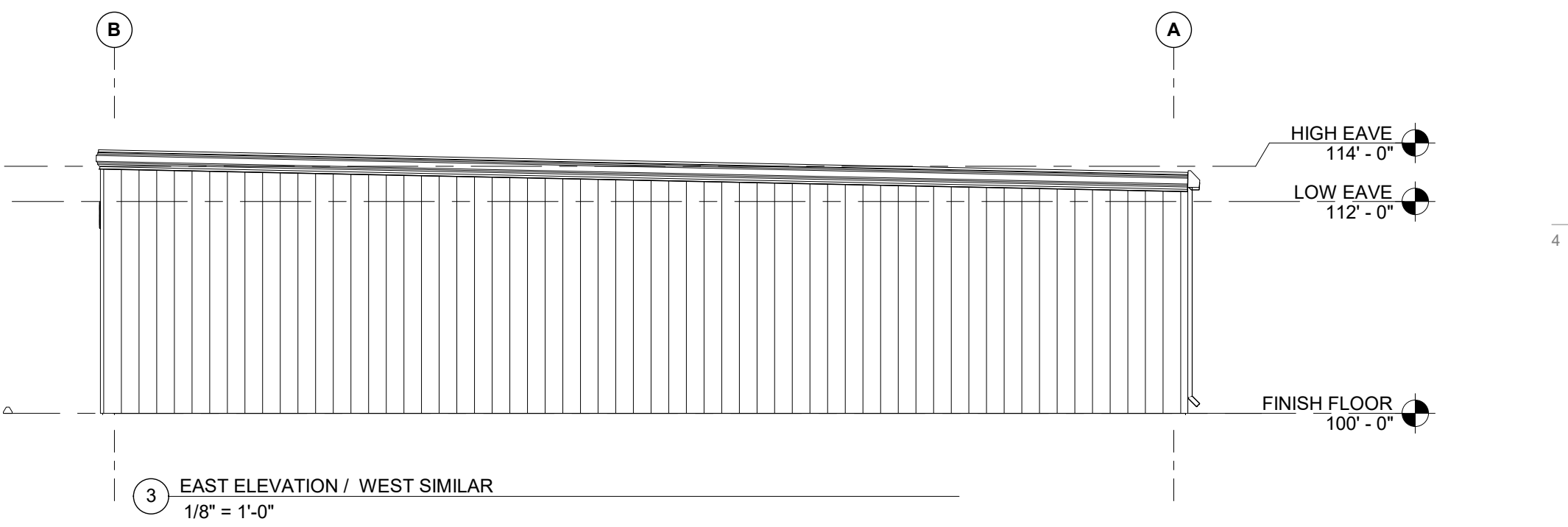
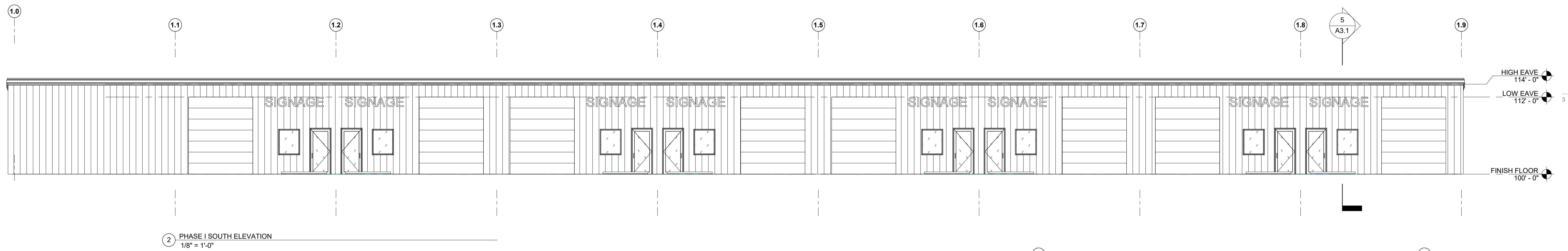
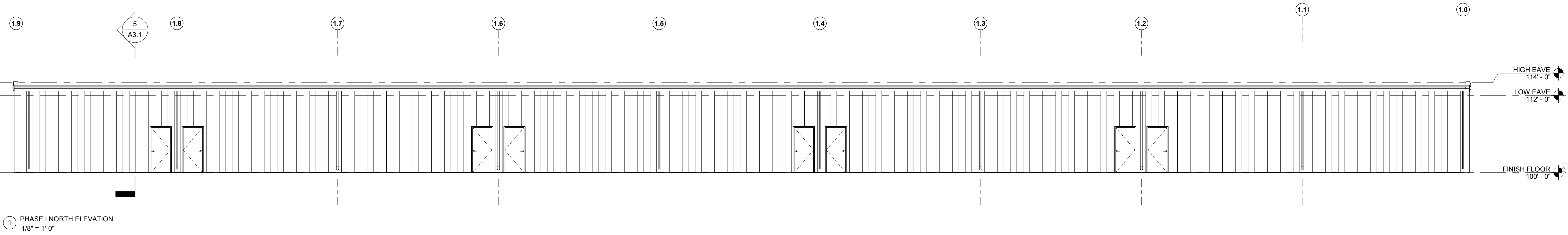
CASALINI COURT PHASE II
982 E. HENRI DE TONTI BLVD.
TONTITOWN, ARKANSAS 72762

DRAWN BY:
GON
CHECKED BY:
DG

PROJECT #:
19-014

DATE:
2019.03.25

DRAWING:
A2.3
ROOF PLAN



REVISION		
NO.	ISSUE	DATE

CONSULTANT:

CASALINI COURT PHASE II

992 E. HENRI DE TONTI BLVD.
TONTITOWN, ARKANSAS 72762

DRAWN BY:
GON
CHECKED BY:
DG

PROJECT #:
19-014

DATE:
2019.03.25

DRAWING:
A3.1
EXTERIOR BUILDING
ELEVATION(S)