



### Planning Board

Darrell Watts – Chairman  
Rocky Clinton-Vice-Chairman  
Jim Miller-Secretary  
Susan Sedberry-Member  
Ken Robertson-Member

City Engineer-Terry Carpenter  
City Planner-Jeff Hawkins  
City Attorney-Harrington-Miller  
Public Works Director-James Clark  
Code Enforcement Officer-Brett Freeland

---

### ***Planning Board Agenda***

Date: April 17<sup>th</sup>, 2017

Time: 7:00 p.m. – Tontitown City Hall, 235 east Henri de Tonti Boulevard, Tontitown Arkansas

---

1. **Planning Board Public Hearing Meeting Call to Order**
2. **Roll Call**
3. **New Business**
  - Conditional Use Permit – Victory Church**
  - Parcel # 830-37584-002 (Hwy 112 N)**
  - Proposed Use: The Edge – Teen Prevention Production**
4. **Comments from Citizens on Victory Church Conditional Use Request**
5. **Meeting Adjourned**



Production Manager

Phil Johnson

The Edge

502-303-7240

e-mail: [phil@reachinnovations.com](mailto:phil@reachinnovations.com)

website: [www.theedgetour.com](http://www.theedgetour.com)

**The ultimate walk-through experience  
Reaching and Rescuing teenagers in cities across America**

The Edge is a walk-through production housed in a 20,000 sq. ft. air inflated structure and focuses on the end result of choices among teenagers and young adults. The reality theater depicts what can happen as a result of good or bad decisions. Groups of 25-30 enter the production every four and a half minutes and enjoy a 45 minute walk-through experience.

According to national statistics many young people die everyday in America from the following causes:

- 31 in auto related accidents (texting & driving is now #1)
- 16 from domestic violence or homicide
- 12 commit suicide
- The remainder from consequences, death from diseases and natural causes

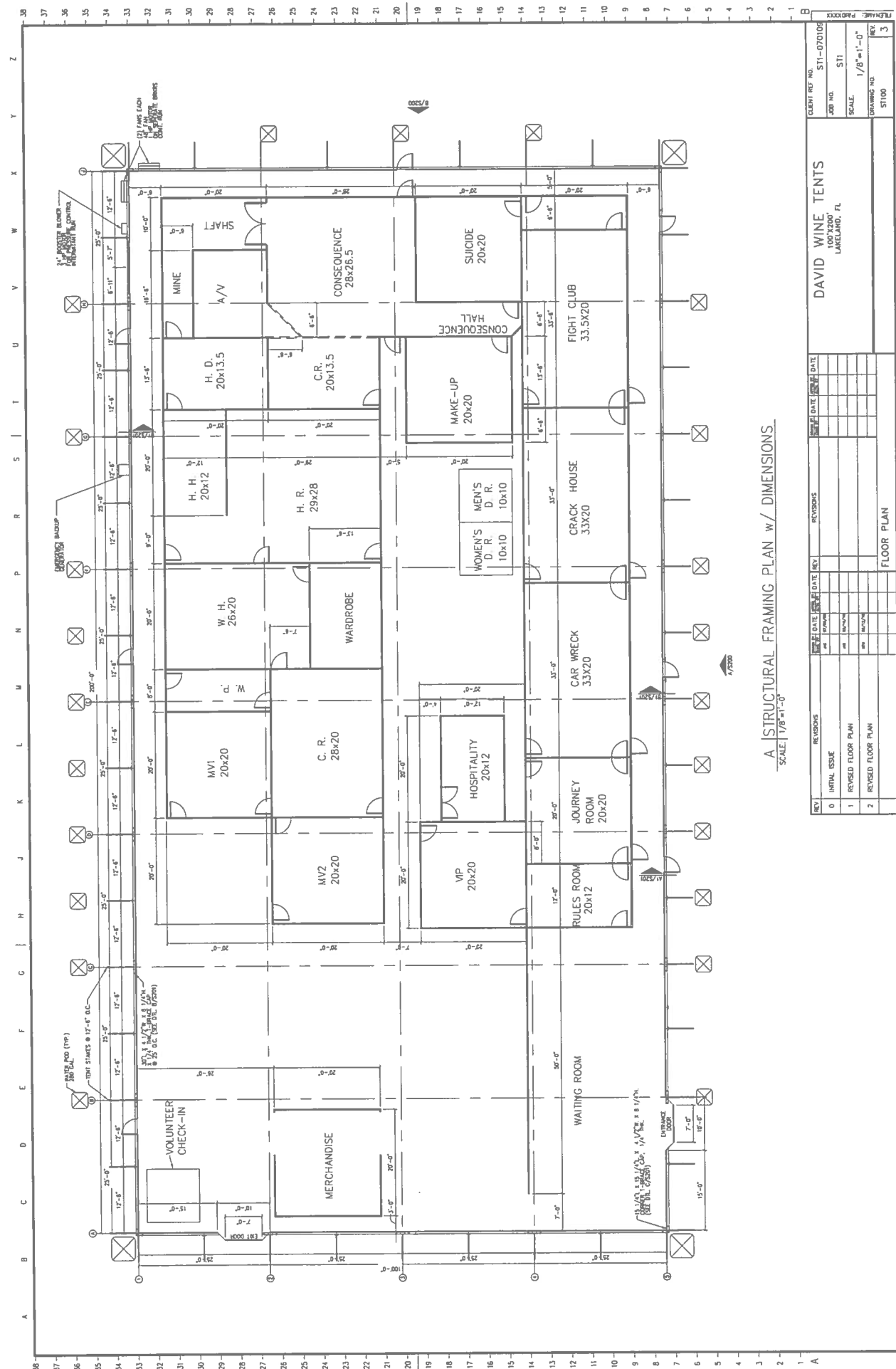
Teenagers many times want to see how close to the edge they can go without getting burned. The Edge will show teenagers the end result of poor choices or a lack of consequences. It also reveals the harsh reality of what happens when hanging out with the wrong kind of people.

This thirteen room, traveling experience, shows young adults and teenagers the power of life or death in their choices. It helps them understand that if you get into a car with someone who is drinking, texting, or racing, you may not live. There is a real crack house, designed by former crack addicts to portray the end result of drug addiction. We have found that after a teenager goes through each scene; their eyes are opened to the reality that life is more than a cheap thrill or succumbing to the negative peer-pressure from friends.

The Edge is positioned to handle 8,000 to 12,000 people over a four weekend period. Each evening of the production 150 volunteers unite together to help stage the production and bring awareness to this generation.

**The Edge will be in production from April 28<sup>th</sup> – May 21<sup>st</sup> every Friday, Saturday, and Sunday night. Doors open @7:00 PM and close at 10:00 PM. There is a \$5.00 cover charge per person.**

# STRUCTURAL FRAMING PLAN



A | STRUCTURAL FRAMING PLAN w/ DIMENSIONS  
SCALE 1/8"=1'-0"

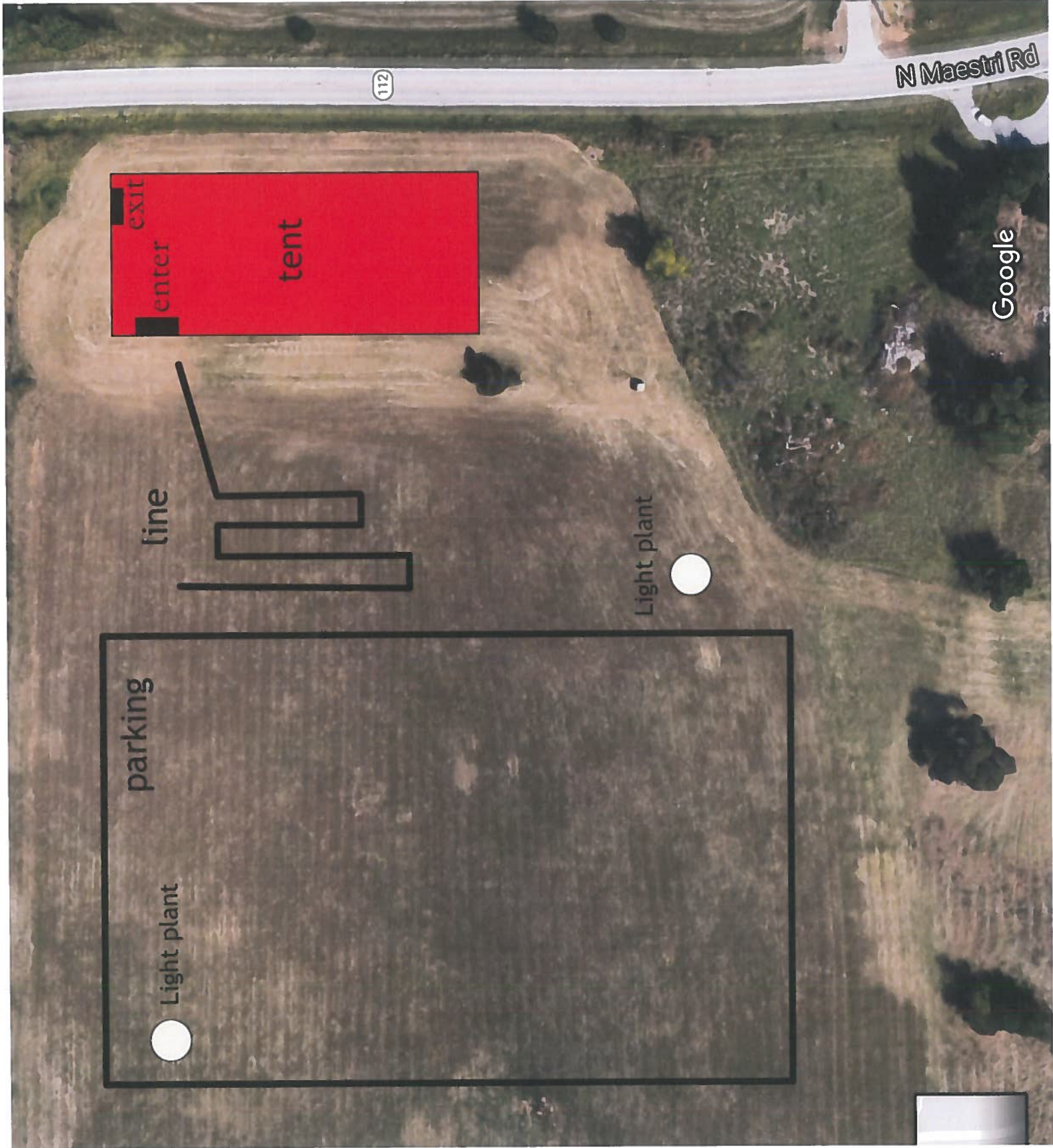
REV	REVISIONS	DATE	REV	REVISIONS	DATE
0	INITIAL ISSUE				
1	REVISED FLOOR PLAN				
2	REVISED FLOOR PLAN				

CLIENT REF. NO.	S11-070106
JOB NO.	S11
SCALE	1/8"=1'-0"
DRAWING NO.	S1100
REV.	3

DAVID WINE TENTS LANEALAND, FL	
FLOOR PLAN	



N Maestri Rd

112

enter  
tent  
exit

line

Light plant

parking

Light plant

Google