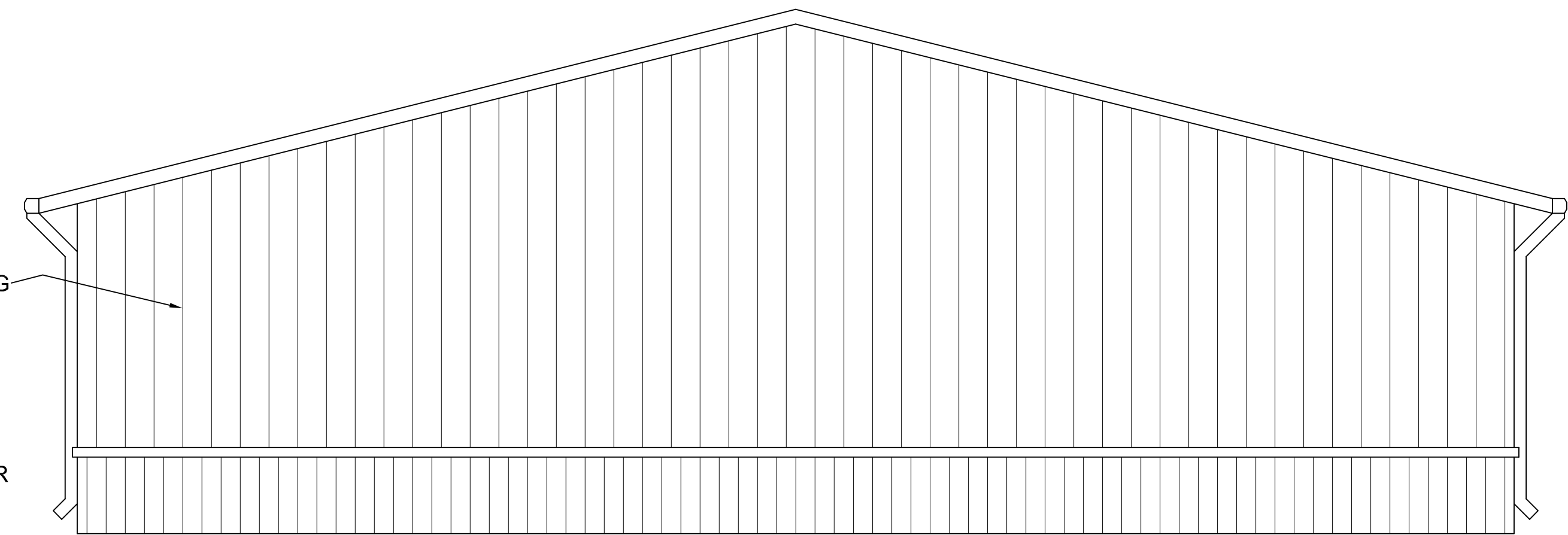
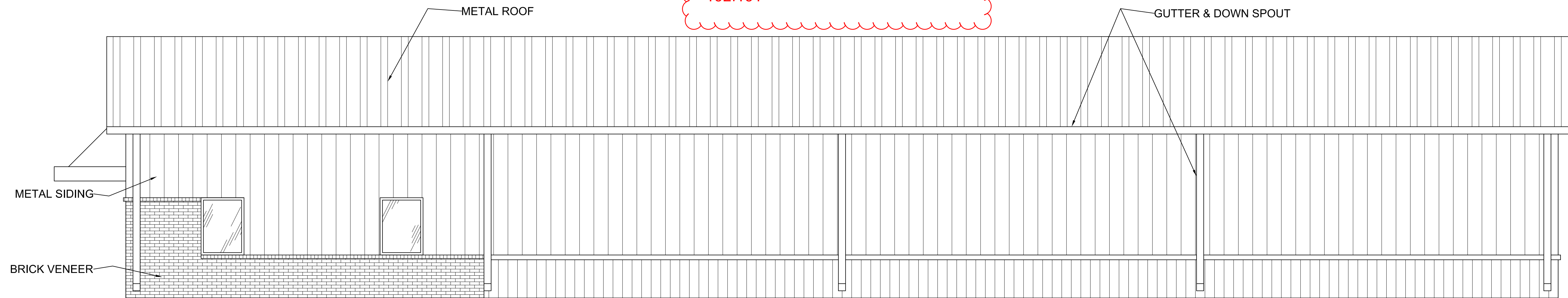


WEST ELEVATION ————— SCALE: 1/4" = 1'-0"

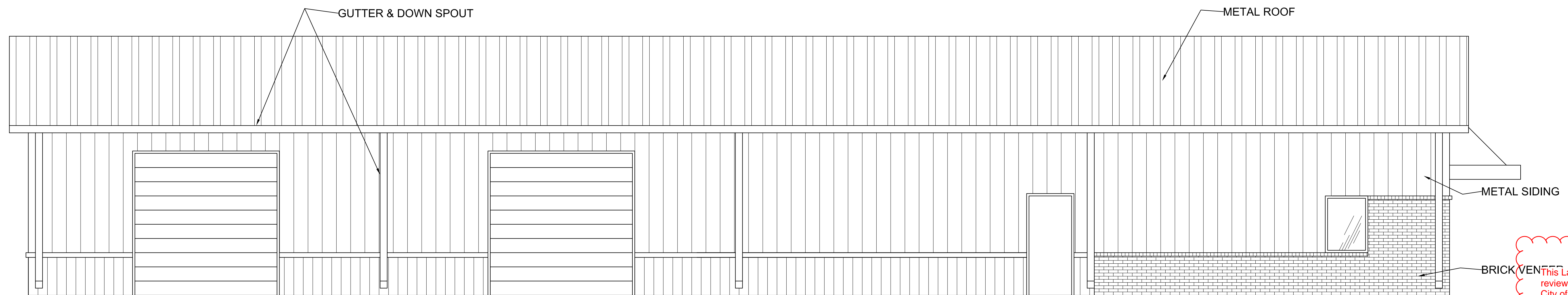


EAST ELEVATION ————— SCALE: 1/4" = 1'-0"

All materials shall comply with Section 152.151



SOUTH ELEVATION ————— SCALE: 1/4" = 1'-0"

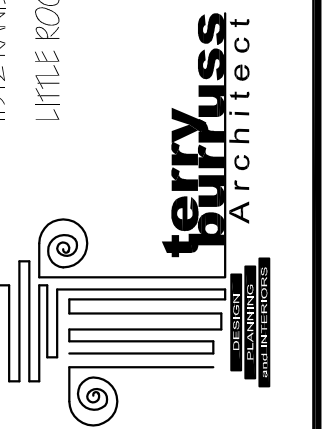


NORTH ELEVATION ————— SCALE: 1/4" = 1'-0"

T-1545

COPYRIGHT, TBA

11912 KANSAS ROAD, SUITE F-8
LITTLE ROCK, ARKANSAS, 72211
(OFFICE) 501-376-3676
(FAX) 501-376-3766
tba@tbaarchitect.com



SHEET TITLE:

ELEVATIONS

NEW FACILITY FOR:

AUTOMATIC DOOR SALES & SERVICE

ARKANSAS

TONTITOWN,

PROJECT # 1545

This Large Scale Development has been reviewed for general compliance with the City of Tontitown Zoning and Planning Ordinances. Oversight of any regulations does not relieve the Owner of their responsibility to comply with all regulations.

Terry W. Carpenter, P.E.
Tontitown City Engineer, October 26, 2015