

FILED  
FOR RECORD  
86 APR 30 PM 3 15  
WASHINGTON COUNTY AR  
ALMA KOLLMEYER  
CIRCUIT CLERK

SURVEYS  
J. F. SUTVEYORS  
1965 N. College  
Payetteville, Ar. 72703

TRINITY CENTER AND DEVELOPER  
J. B. and Kaye J. Ottwell  
Payetteville, Ar. 72703

**LEGAL DESCRIPTION:**

Part of the Northeast Quarter (NE 1/4) of Section 26, also a part of the South One Half (S 1/2) of the Southeast Quarter (SE 1/4) of Section 23, all in Township 17 North, Range 31 West of the Fifth Principal Meridian, Washington County, Arkansas, and being more particularly described as follows, to-wit: Beginning at a point that is 38.30' N 11° W, 330 feet; thence S 89° 50' 40" W, 475.00 feet; thence N 1° 07' 31" W, 1320.00 feet; thence S 31° 53' 53" W, 692.31 feet; thence S 30° 27' 22" W, 317.87 feet to a point that is on the centerline of County Road 200; thence with said centerline, N 54° 00' 12" W, 372.13 feet; thence N 71° 04' 13" E, 136.93 feet; thence N 67° 45' 51" E, 111.70 feet; thence N 71° 04' 13" E, 322.52 feet; thence N 74° 29' 13" E, 519.31 feet; thence leaving said centerline, S 22° 53' 09" E, 422.67 feet; thence N 69° 00' 11" E, 330 feet to the point of beginning and containing 96.66 acres, more or less and subject to that portion that lies in County Road 200 on the north side and all other easements of record.

LOCATION  
Washington County Highway #74

**CERTIFICATE OF ACCURACY**

I certify that the plan shows and describes hereon is a true and correct survey and that the monuments have been placed as shown hereon as required by Washington County Subdivision Code Chapter 11, A.R.S. 7-1-1, 7-1-2, 7-1-3, 7-1-4, 7-1-5, 7-1-6, 7-1-7, 7-1-8, 7-1-9, 7-1-10, 7-1-11, 7-1-12, 7-1-13, 7-1-14, 7-1-15, 7-1-16, 7-1-17, 7-1-18, 7-1-19, 7-1-20, 7-1-21, 7-1-22, 7-1-23, 7-1-24, 7-1-25, 7-1-26, 7-1-27, 7-1-28, 7-1-29, 7-1-30, 7-1-31, 7-1-32, 7-1-33, 7-1-34, 7-1-35, 7-1-36, 7-1-37, 7-1-38, 7-1-39, 7-1-40, 7-1-41, 7-1-42, 7-1-43, 7-1-44, 7-1-45, 7-1-46, 7-1-47, 7-1-48, 7-1-49, 7-1-50, 7-1-51, 7-1-52, 7-1-53, 7-1-54, 7-1-55, 7-1-56, 7-1-57, 7-1-58, 7-1-59, 7-1-60, 7-1-61, 7-1-62, 7-1-63, 7-1-64, 7-1-65, 7-1-66, 7-1-67, 7-1-68, 7-1-69, 7-1-70, 7-1-71, 7-1-72, 7-1-73, 7-1-74, 7-1-75, 7-1-76, 7-1-77, 7-1-78, 7-1-79, 7-1-80, 7-1-81, 7-1-82, 7-1-83, 7-1-84, 7-1-85, 7-1-86, 7-1-87, 7-1-88, 7-1-89, 7-1-90, 7-1-91, 7-1-92, 7-1-93, 7-1-94, 7-1-95, 7-1-96, 7-1-97, 7-1-98, 7-1-99, 7-1-100.

**CERTIFICATE OF OWNERSHIP AND DEDICATION**

I hereby certify that I am the owner of the property described herein and I hereby dedicate all rights and interests therein to the public for private use as indicated. *Approved and Cleared respectively 4/11/86*

UTILITY BASEMENTS  
Gas Telephone *AT&T* Electric *General* Water *City*

COUNTY ROAD SUPERINTERMENT APPROVAL  
Road and street lines shown on this plat and described by letter from owner and developer *James E. Ottwell* dated *April 11-1986* and filed by County Clerk on *April 11-1986*

DECLARATIONS OF COVENANTS AND RESTRICTIONS  
Covenants and restrictions are on shown on account signed by owner on *10/21/86* and filed by County Clerk on *10/21/86*

WASHINGTON COUNTY PLANNING BOARD APPROVAL  
This plat was approved by the Washington County Planning Board on *April 9* 1986. *James E. Ottwell* Planning Board Chairman

COUNTY JUDGE APPROVAL  
Subdivision is approved. The road easement dedications shown are hereby accepted. Acceptance of roads and streets for County maintenance after leveler completes them to Washington County Highway Plan Specifications. The County Court Superintendent will make the final inspection and accept for the County by executing the Road and Street Declaration Certificate required by the Washington County Subdivision Regulations.

*Charles L. Johnson*  
County Judge

DATE: 4/11/86

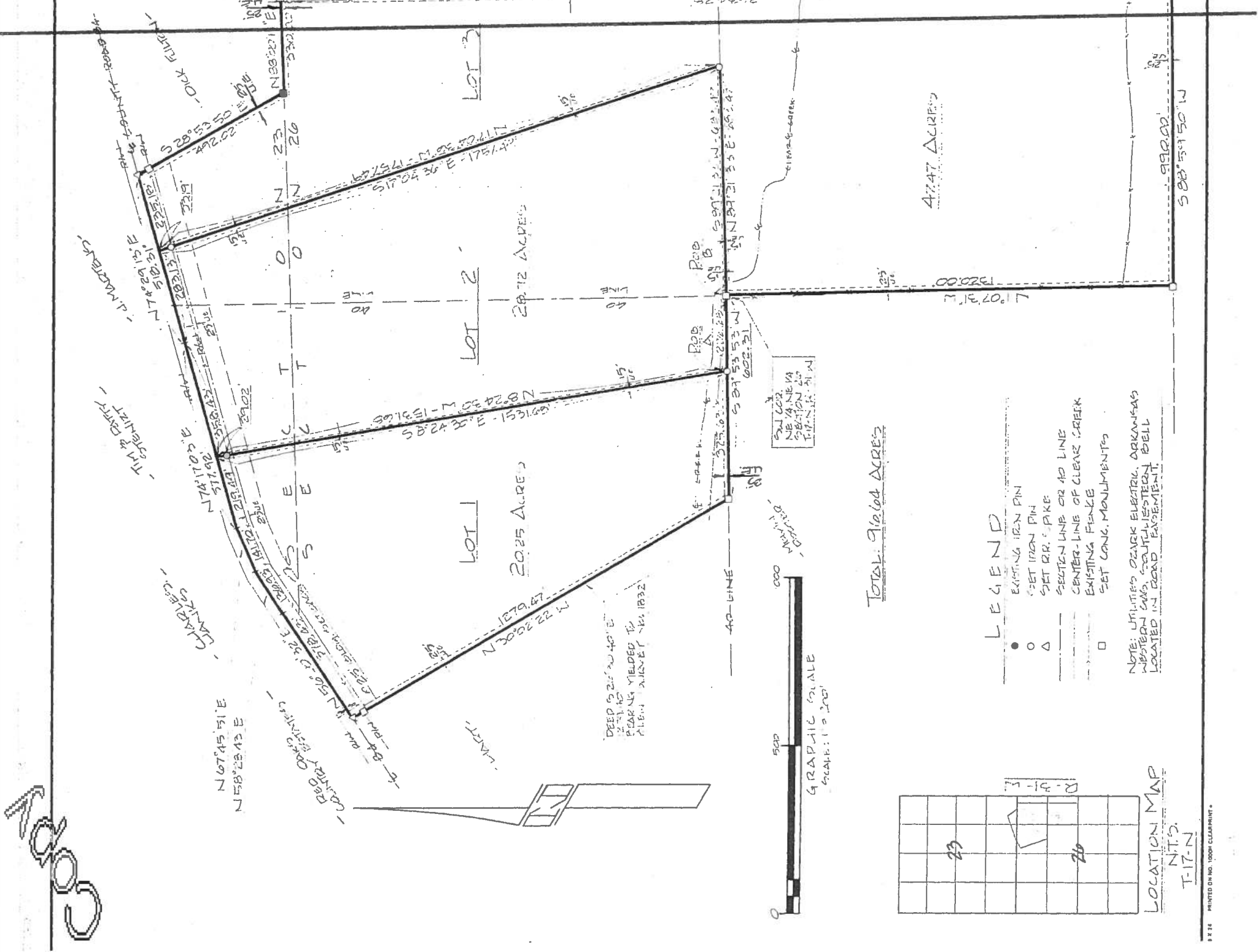
APPROVED BY: JAMES E. OTTWEIL

DRAWN BY: G.A.

OTWELL FARMS SUBDIVISION

C.P.F. SURVEYORS

DRAWING NUMBER 86-727



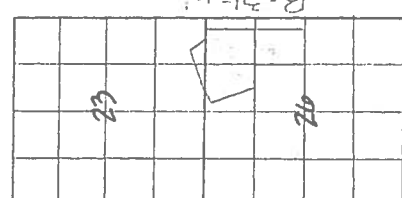
**LEGEND**

- EXISTING IRON PIN
- SET IRON PIN
- △ SET RR. SPIKE
- SETTEN LINE OR AD LINE
- - - CENTER-LINE OF CLEAR CREEK
- EXISTING FENCE
- SET CONC. MONUMENTS

NOTE: UTILITIES DEAR ELECTR. ARKANSAS  
WATER GAS, TELEPHONE, BELL  
LOCATED IN ROAD EASEMENT.



GRAPHIC SCALE  
SCALE: 1" = 200'



LOCATION MAP  
T-17-N  
R-31-W