



Cost: Free

Features include:

- Alerts for severe weather watches and warnings
- Powerful street level interactive radar
- Customizable layers of radar, from storm tracks to warnings to lightning
- Clickable storm tracks to provide individual storm info
- Current conditions and forecasts wherever you are, or any location you set
- School, business, and organization closings
- Share weather updates to Facebook and Twitter



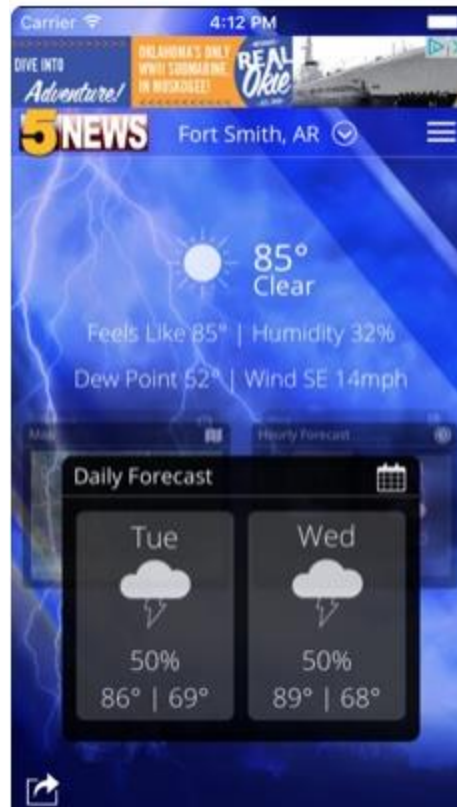
Cost: Free

Your Weather Authority is bringing all the power of our weather team right to your smart device. Get your LOCAL weather forecast directly from our weather experts who know this area and how the weather will impact your day.

The NWA Weather Authority mobile app is here. Get hyper-local video forecasts updated several times a day, detailed hour-by-hour and extended 7-day forecasts, fully interactive radar and watch our live TV coverage streaming during severe weather events. Plus, it's the easiest way to send us your pictures.

New Features:

- Important Information Highlighted At the Top
- Current 7 Day and Hourly forecasts
- Targeted Push Alerts for Your Exact Location
- Videos with Specifics Down to the Hour



Cost: Free

The 5NEWS Weather app is a full-featured weather app for the Ft. Smith-Fayetteville-Bentonville area with the tools to keep you informed of weather news, current conditions and forecasts – all from the 5NEWS Weather Team. View the interactive radar and stay alerted to any watches or warnings in the area – right on your phone.

The KFSM Mobile Weather App includes:

- * Access to station content specifically for our mobile users
- * 250 meter radar, the highest resolution available
- * Future radar to see where severe weather is headed
- * High resolution satellite cloud imagery
- * Current weather updated multiple times per hour
- * Daily and Hourly forecasts updated hourly from our computer models
- * Ability to add and save your favorite locations
- * A fully integrated GPS for current location awareness
- * Severe weather alerts from the National Weather Service
- * Opt-in push alerts to keep you safe in severe weather

Storm Sirens, Inc.

Cost: \$93,800

Storm Sirens, Inc.

3801 Harrogate Drive

Norman, Ok 73072

1-800-527-6375

stormsirens@aol.com

January 1, 2019

Paul Colvoin, Jr., Mayor
City of Tontitown
P.O. Box 305
Tontitown, Arkansas 72770

Regarding: Storm Warning System

Dear Mr. McCormick:

With the start of a New Year and storm season quickly approaching, I wanted to take this opportunity to update that Storm Siren Proposal that I gave Chief McCormick in 2017.

Sentry Siren, Inc., has been building storm warning sirens since 1905. Currently, they manufacture 14 different models of storm warning sirens. As the regional representative for Sentry, my company has over 30 years of experience designing and installing Sentry storm warning systems. We have supplied and installed nearly 2000 sirens regionally and over 200 in the State of Arkansas.

Based on my company's on site survey of the City, I recommended a system of 4 large storm warning sirens at or near the locations show on the enclosed map.

The enclosed map shows the approximate coverage the City would receive from 4 Sentry model 14V-B Storm Warning Sirens. This is not to say that the sirens would not be heard beyond the indicated areas, just that the dB level would fall below the FEMA recommended minimum for outdoor warning.

The Sentry model 14V-B is a large siren equipped with battery back-up. The 14V-B normally runs from 230 VAC, single-phase, 125 amp electrical service. However, in the event of a power failure, the siren will automatically switch to its bank of rechargeable batteries. Perhaps the key feature of the Sentry model 14V-B is the

Storm Sirens, Inc.

3801 Harrogate Drive

Norman, Ok 73072

1-800-527-6375

stormsirens@aol.com

length of time the siren will run on batteries in a power failure. As is common in Arkansas, storms frequently come in lines over a 3 or 4 hour period. If the first storm knocks out the power, you may need a siren system that can be sounded 6 or 7 times before power is restored. The Sentry model 14V-B will run on batteries for a minimum of 30 minutes, cumulative time (10 standard 3 minute signals). **This is twice as long on batteries as most competitive sirens will run.**

Proposal:

Qty. 4 Sentry Model 14V-B Stationary Warning Siren

Omni-Directional

14 HP Continuous Duty DC Motors

dB Rating at 100 Feet: 127

Range: 5000 Ft Radius/10000 Ft Diameter

Optima 34U Redtop Batteries

Battery Box W/ Dual Pro Chargers

Magnetic Starter in a NEMA 3R Enclosure

Qty. 4 CD&F Model SD2100 Radio Decoder

Weatherproof Cabinet (Lockable)

Antenna

Total Price \$93,800.00, Complete & Installed (Turn-Key)

This proposal includes 45' class II telephone poles on which the sirens would be mounted. The only items that the City would have to provide would be the siren sites, appropriate electrical service to the siren poles and any information needed to program the radio decoders.

Also include in the proposal is a system of CD&F model SD2100 Radio Decoders. The decoders would allow the sirens to be remotely activated from the Washington County 911 Center or locally by Tontitown PD.

Storm Sirens, Inc.

3801 Harrogate Drive

Norman, Ok 73072

1-800-527-6375

stormsirens@aol.com

Each Sentry siren is custom made using parts cast from the same metal ingot which means that the components expand and contract in the heat and cold at the same rate. This ensures significantly closer tolerances and longer operational life. When evaluated by the Nuclear Regulatory Commission for use around power plants, Sentry sirens were estimated to have a 53 year life expectancy.

Unlike most competitive sirens, all Sentry sirens are covered by a complete 7 year parts and labor warranty. Sentry is able to offer such a long warranty because they use superior components in the construction of each siren. For example, each Sentry siren uses a continuous-duty, series-wound motor rather than a permanent-magnet motor.

The benefit of a series-wound motor is two-fold: as the load on the motor increases, the magnetic field from the coils in the motor increases at the same time, allowing more torque to be generated; and the series-wound motor tends to be more energy efficient and lasts significantly longer than a permanent-magnet motor. **ALL SENTRY SIRENS ARE PROUDLY MANUFACTURED IN THE UNITED STATES OF AMERICA.**

All Sentry sirens are omni-directional sirens. As stated in the FEMA, Outdoor Warning-Systems, Technical Bulletin (Version 2.0), January 12, 2006, omni-directional sirens are considered superior to rotating sirens:

4.1 General Considerations for Outdoor Warning Systems, Page 28

"Omni-directional sirens provide greater area coverage than do rotating or directional devices. They provide a more constant signal that improves public alerting in areas with highly fluctuating ambient noise, along with the reinforcing effect of multiple sound sources (up to a 3 dB increase for two adjacent sound sources in the same environmental setting)."

4.4.5 Determining Locations Where Outdoor PAS Devices Should Be Avoided, Page 32

"In situations where there are high fluctuations in the ambient noise level, or near the limits of the audible device range, omni-directional devices present a distinct advantage, in terms of their signal consistency, over rotational devices. For example, because of the reduced duration of its peak

Storm Sirens, Inc.

3801 Harrogate Drive

Norman, Ok 73072

1-800-527-6375

stormsirens@aol.com

sound level in any single direction during its 360 degree sweep, a rotational device will have an overall lower dB level when *assessed across a given time period* than an omni-directional device operating at the same frequency. Additionally, because sound has a reinforcing effect, omni-directional devices can act as sound "boosters" with adjacent audible devices. The effect applies for adjacent omni-directional audible devices as well as to omni-directional devices that are adjacent to rotational or directional devices".

My company has supplied and installed hundreds of Sentry storm warning systems throughout the Midwest. Some of the communities in Almyra, Arkadelphia, Barling, Ben Lomond, Branch, Brinkley, Calico Rock, Centerton, Cotton Plant, Corning, Cushman, Des Arc, Evening Shade, Foreman, Franklin, Gilham, Greer's Ferry, Guion, Guy, Hackett, Highfill, Horseshoe Bend, Joiner, Jonesburg, Knobles, Lake City, Leola, Little Rock, Lowell, Madison County, Magazine, Mammoth Springs, Manila, Marshall, Melbourne, Monette, Mount Pleasant, Nashville, O'Kean, Oak Grove, Ogden, Oxford, Pineville, Pottsville, Texarkana, Tillar, Tucker, Vilonia, Waldenburg, Weiner, Wheatley, and Widener.

As stated, the Sentry Model 14V-B Storm Warning Siren is covered by a 7 year warranty. The CD&F model SD2100 Radio Decoders are covered by a 2 year warranty and the Optima 34U Redtop used in the model 14V-B are covered by a 2 year replacement, 3 year pro-rated warranty.

If you have any questions, please contact us at our toll free number 1 (800) 527-6375 or by e-mail stormsirens@aol.com.

Sincerely,

Frederick R. Engelbrecht

Frederick R. Engelbrecht
President

FRE:st

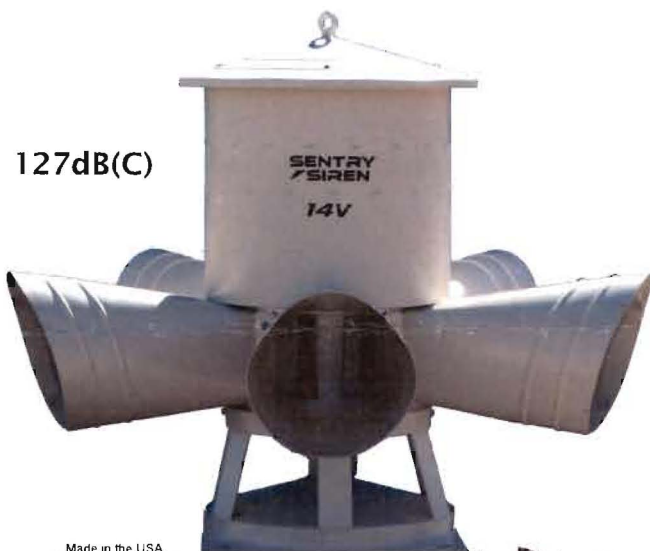
14V-B

Premium Warning Siren

The Ultimate Combination of Power,
Performance, and Price

**SENTRY
SIREN** Inc.®

127dB(C)



Made in the USA



- 100% Maintenance Free, not just the siren, the whole system!
- **Non-Rotating:** Forget the worries of rotating sirens, this unit has only two moving parts and does not require lubrication or any type of scheduled adjustment or maintenance.
- **Compatibility:** This siren will integrate seamlessly with most existing siren systems.
- **5 year Warranty:** rest assured your siren will be functional at all times and enjoy the confidence of free lifetime tech support and the best customer service in the industry.

The ground-shaking 14V-B was designed to provide the same power and performance of our two-tone siren line with a single tone / single row of projection horns. Perfect for single or multiple siren installations, this siren is FEMA and USDA grant compliant.

This 14 Horsepower brute is rated at 127dB(c) @ 100 ft. continuous*. Not just for 25% of its cycle time, like its rotating competitors, the 127 dB measurement is for 100% of its full volume run time. Plus, this 127 dB is broadcast at 600Hz. The 14V-B's mid-range frequency perfectly combines the penetrating ability and low fade rate of low frequency sirens with the sound wave reflectivity of high frequency sirens.

Perhaps the key feature of the 14V-B is the length of time that the siren will run on batteries. As is common in the United States, storms frequently come in lines over a 3 or 4 hour period.

If the first storm knocks out power, you may need a siren which can be sounded 6 or 7 times before power is restored. The Sentry model 14V-B can sound 10 full 3 minute signals using its battery reserve; that's more than twice the reserve capacity of competitive sirens.

Unmatched in the siren industry, the 14V-B creates a state of the art system, with tried and true technology, for a winning combination.

ELECTRO-MECHANICAL SIRENS

produce stronger and further reaching sound than electronic sirens while providing far better reliability.

OMNI-DIRECTIONAL DEVICES

"...present a distinct advantage... over rotational devices," according to FEMA's warning system guide. It says "a rotational device will have an overall lower dB level when assessed across a given time period than an Omni-directional device operating at the same frequency." (4.4.5 FEMA OWS Technical Bulletin 2.0)

Further, the guide states: "Omni-directional sirens provide a greater area of coverage than do rotating or directional devices. They provide a more constant signal that improves public alerting..." (4.4.5 FEMA OWS Technical Bulletin 2.0)

14V-B

Premium Warning Siren

Performance

This siren is rated @ 127 dB(c) at 100 ft.*

Estimated sound radius is 5,400 ft. continuous.**

Sound pattern is Omni-Directional producing 100% volume at peak RPM 100% of the siren cycle time.

The 14V-B produces a single pitch design with one rotor producing 600 Hz.

Power Requirements

14V-B - AC/DC Battery Backup Siren:

Siren operates on AC rectified power when available then automatically switches to battery backup power when AC power fails.

14V-B uses one (1) American Made, 14 HP, DC motor. 125 Amp, 208-240 VAC, 1 phase power required.

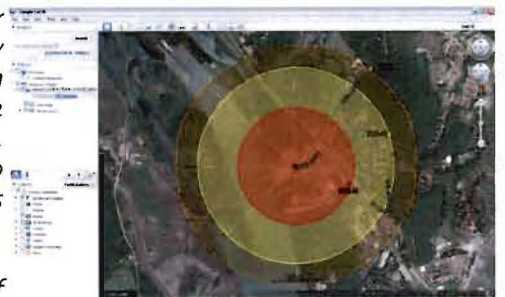
Separate, 30 Amp, 110 VAC circuit required for controls.

Additional Services / Accessories



Need a site design? One of our engineers will work with you step by step to determine the optimum location for your siren(s). We analyze topography and terrain, population, available infrastructure, and more to design a siren system that best suits your community's needs.

Best of all, this is done 100% free of charge, no obligation!



Siren Starters and Controllers:

Our "S" series siren motor starters and "Generation" series siren controllers make powering and activating your siren simple and easy. Call us today and let our knowledgeable staff help you select the perfect control solution for your system!



"S" series motor starter



GEN-1 manual controller



GEN-3 radio controller

Be sure to ask about our full line of siren activation, weather monitoring and communication packages including "Storm Sentry", the world's first fully automatic siren activation system, "S.T.A.R.", our state-of-the-art report-back status monitoring system, and "E.P.I.C.", the world's first PC-based FEMA IPAWS interface.



* - Sentry rating based on field tests using FEMA Guidelines; assumes perfect conditions, actual coverages may vary based on multiple factors. No guarantee is expressed or implied concerning dB or SPL of sirens.

** - Based on FEMA guidelines of 9 dB drop and assumes perfect conditions, actual coverages may vary based on unforeseen factors. No guarantee is expressed or implied concerning sound coverage of sirens.

Code Red Alert System

Cost: \$2,500/Annually



Solution Overview

Presented to Tonitown, AR

Presented by:

Brian Choyka
Senior Regional Manager

Brian.choyka@onsolve.com



Office 866 939 0911

Mobile 610 823 8846



780 W. Granada Blvd.
Ormond Beach, FL 32174



onsolve.com



EMERGENCY AND CRITICAL COMMUNICATIONS

OnSolve provides the industry's most proven and easy-to-use notification services capable of reaching hundreds of thousands of citizens in minutes. The company has been in the critical communications business for nearly two decades, developing and implementing the technology that has delivered more than a billion messages across North America.

The OnSolve web-based product suite features four hosted solutions for municipalities:

- **CodeRED®** for community and staff notifications
- **CodeRED Weather Warning®** for automated severe weather alerts
- **CodeRED for IPAWS** providing integrated access to the nation's alerting system
- **MyDailyCall™** for checking on at risk individuals



CodeRED

The CodeRED solution was designed specifically for government and public safety officials to record, send and track personalized voice, email, text and social media messages to citizens, as well as staff. OnSolve employs a proprietary mapping technology and patented delivery methods as integral components of its high-speed notification system in operation since 1998.





CodeRED Mobile Alert app

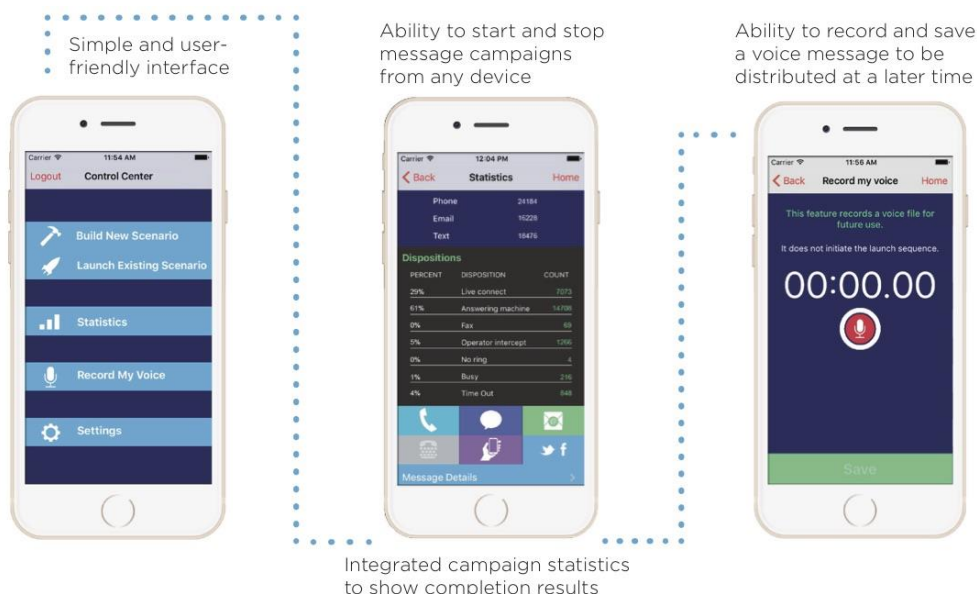
This latest innovation in the public safety arena answers the question asked by many Emergency Managers nationwide – “How do we communicate with people in our jurisdiction who do not reside here?”

The answer is by using a location-based method to deliver CodeRED initiated messages. The CodeRED Mobile Alert app is geo-aware and sends push notifications to a subscriber’s device when alerts are issued for their current geographical location. This advanced technology enables local officials which utilize CodeRED to reach those individuals passing through their jurisdiction and helps to also protect citizens traveling outside their local coverage area.

MOBILE LAUNCHING CAPABILITIES

The world has become increasingly mobile and therefore, OnSolve has developed tools to meet the specific needs of our clients. This includes the ability to create and send notifications on the go, from any location at any time via a mobile device.

The CodedRED Launcher app, which can be used on any Android, iOS or Windows device, allows users to quickly and easily build scenarios, utilize saved scenarios, launch to existing contact groups, select a geographic calling area via the map, and launch ad hoc notifications across all modes of dissemination. The app also provides users with a detailed view of statistics in order to analyze each notification sent.



The CodedRED Launcher app empowers users to launch notifications immediately from the field



Simple implementation

The CodeRED system is operational immediately and can be ready for use today. With no equipment to install or phone lines to add, authorized users simply login to the CodeRED system with their password to begin. An initial calling database and local maps are provided by OnSolve and are instantly available to enable users to easily target residents and businesses by specified area.



Ease of use

The CodeRED system was designed to be easy to use even under the most strenuous of conditions. Expecting use under pressure, the feature rich interface was built with a simple three step process to initiate critical communications. Messages may be launched by authorized users via telephone or the Internet, from anywhere at any time.



Training and refresher courses are regularly provided via live web-based seminars to ensure your staff is always comfortable with the system and confident in their ability to launch a notification.



Live client support

Available 24/7/365, the OnSolve Client Support Team is staffed by knowledgeable individuals thoroughly trained on all aspects of the CodeRED system. In addition to handling inbound inquiries, the team monitors system activity as well as weather and other news feeds, to stay on top of developing situations; when appropriate, they will also reach out to clients to provide suggestions and support for system use.

Technology

CodeRED's robust platform is built upon a sophisticated infrastructure which includes multiple built-in redundancies to support thousands of jobs running simultaneously.

Proprietary trademarked technology is used to ensure messages are delivered in their entirety regardless if the call is picked up by a person, or by an answering device. If a call is missed, message recipients may simply dial the system back via the toll-free number displayed on their caller ID to hear the last message delivered to their phone. This Universal ANI® feature is not only convenient for the recipients of notifications; but, it also relieves inbound call congestion on your personnel and often overworked emergency lines.

Furthermore, OnSolve manages its entire network in-house, maintaining control over dialing systems and not relying on any third-party or shared lines to place calls. This dedicated network ensures client jobs initiate immediately and do not have to be queued or competed by available phone lines with other dialing priorities. Most importantly, by eliminating any dependence on third-party Service Level Agreements (SLAs), an entire layer of potential failure is removed.

Speed

The OnSolve infrastructure maintains a massive system capacity that is able to transmit millions of messages an hour. Each account is throttled and system resources are allocated to match the local telephone infrastructure, resulting in more connected calls, less network congestion, and fewer busy signals. The CodeRED system was built for use during time-sensitive situations, when ensuring communications are delivered as quickly as possible, is what matters most.

Mapping

Mapping is available for use when messages need to be geographically targeted. The web-based mapping interface, written by OnSolve, is both intuitive and easy-to-use. CodeRED utilizes ESRI mapping as a foundation and has created area selection tools that range from polygons to simple paint brush tools, allowing users to quickly become familiar with the map's features. OnSolve hosts all components of the mapping interface, relying on no third-party providers.



Calling data

Each client accesses a database which is populated by multiple sources. All compiled data is verified and addresses are assigned lat/long coordinates by the OnSolve custom multi-layer geo-coding service.

OnSolve will provide the residential and business calling database. Communities using CodeRED typically provide data from their local utilities as well as their 911 data. OnSolve geo-codes all client supplied data as a standard part of the database building process.

And finally, the most accurate layer is created by entries to the Community Notification Enrollment (CNE) page. OnSolve provides a custom Web page for each community, allowing residents and businesses to directly submit additional calling data, text and email addresses, as well as TDD/TTY requirements, to further populate the database. All information added to the CNE is instantly available for use within CodeRED.

Validata®

The CodeRED database is scrubbed using the unique Validata process, numbers that cannot be confirmed as valid, are removed to create a cleaner, more efficient calling list.

Internal use

The CodeRED system enables users to easily import data groups with up to eight points of contact including text and email addresses. OnSolve developed this multi-channel approach to internal communications as a way to ensure message consistency for first responder notifications, critical incident call outs, and official comment direction. With a few clicks of the mouse, multiple groups, an individual group, or specific group members can quickly be contacted. Users select the best way to send alerts and can then verify the information was delivered rapidly and accurately.



Affordability

OnSolve has priced its CodeRED solution to be cost-effective. There are no set-up fees to pay, no equipment to buy, no phone lines to lease, and no annual maintenance is required. System time, training and support, initial calling database, mapping, integration of client supplied data, and database clean-up are all included.

The OnSolve pricing structure is calculated based on population and is designed to be FEMA friendly to help communities qualify for reimbursement when eligible.

Currently, CodeRED is used every day by clients from coast to coast across the U.S. and in Canada. To find out why the CodeRED high-speed notification solution has been selected as the preferred platform for critical communications by your colleagues time and again, we would be pleased to provide a list of clients who use CodeRED upon request, so you may hear directly from them regarding the advantages of the system.



COST PROPOSAL (PRICING GOOD FOR 90 DAYS FROM 6/17/19)

Keep staff and residents safe and informed with the CodeRED system. Quickly notify staff of time critical information, emergencies and day-to-day operations updates. Send targeted emergency and community notifications to mobile subscribers located in specific geographic areas within your jurisdiction.

A one (1) year CodeRED license includes 24/7/365 uninterrupted system access and the following:

- CodeRED system set-up and initial training
- Unlimited CodeRED Mobile Alert App notifications
- Unlimited voice messaging
- Unlimited SMS text, email and social media alerts
- Unlimited automated polygon-based CodeRED Weather Warnings
- OnSolve provided residential and business database
- Integration and geo-coding of client supplied data (911 data, utility data, etc)
- Managed Data Services and Validata Process provided by OnSolve
- OnSolve standard ESRI mapping
- Custom geo-coding using client supplied center-line data
- Unlimited user accounts and pass codes with role-based permission settings
- Unlimited Contact Groups and Tags for internal staff notification
- Unlimited pre-created scenarios and pre-created messages
- Unlimited use of the CodeRED Launcher mobile application
- Complimentary monthly refresher trainings via webinar
- Design and hosting of custom web-page for community enrollment
- 24/7/365 technical support

\$2,500= Annual Cost

(based on population of 3,715)

Thank you for the opportunity to present you with the CodeRED solution and to submit this proposal to your agency. If you have any questions, please feel free to contact me directly