



Doc ID: 015476480004 Type: REL  
Kind: ORDINANCE  
Recorded: 11/06/2013 at 10:26:46 AM  
Fee Amt: \$30.00 Page 1 of 4  
Washington County, AR  
Kyle Sylvester Circuit Clerk

ORDINANCE 2013-08434

File **2013-00037298**

## AN ORDINANCE APPROVING A NEW PLANNING AREA MAP

WHEREAS, Arkansas' municipal planning statutes require planning commissions to prepare a planning area map and description, designating the area within the City's territorial jurisdiction for which they will make studies and prepare plans, and recommended ordinances, and regulations; and

WHEREAS, changing corporate and territorial jurisdiction boundaries have necessitated the consideration of a new planning area map and description; and

WHEREAS, after due consideration, the Tontitown Planning Commission has approved a new planning area and map; and

WHEREAS, it is the desire of the City Council that said new planning area be formally approved by ordinance, thus replacing former such designations.

NOW, THEREFORE, BE IT ORDAINED BY THE CITY COUNCIL OF THE CITY OF TONTITOWN, ARKANSAS:

SECTION 1. That the map entitled "City of Tontitown Planning Area Boundary – 2013," which is attached hereto and made a part hereof, and the description thereof, which follows, both of which have been approved by the Tontitown Planning Commission, be and are hereby approved and adopted:

All or parts of Sections 25, 26, 27, 28, 31, 32, 33, 34, 35, and 36 of T18N, R31W; all or parts of Sections 1, 2, 3, 4, 5, 6, 8, 9, 10, 11, 12, 13, 14, 15, 22, 23, 24, 25, 26, and 27 of T17N, R31W; all or parts of Sections 6, 7, 8, 17, 18, 19, and 20 of T17N, R30W; and part of S31, T18N, R30W; all in Washington County, Arkansas, and more particularly described as follows:

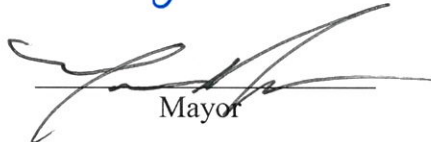
Beginning at a point on the Tontitown city limit line at its intersection with the north boundary of S36, T18N, R31W; thence in a generally westerly direction along the city limit line to the east line of S28, T18N, R31W; thence west to the NE corner of the SW SW of said S28; thence south to the SE corner of the NW NW of S33, T18N, R31W; thence west to the east line of S31, T18N, R31W; thence south to the NE corner of the SE of said S31; thence west to the NW corner of the NE SE of said S31; thence south to the south line of S6, T17N, R31W; thence east to the NW corner of S8, T17N, R31W; thence south to the SW corner of the NW NW of said S8; thence east to the west line of S10, T17N, R31W; thence south along the west lines of Sections 10, 15, 22, and 27 of T17S, R31W to the SW corner of the NW of S27, T17N, R31W; thence east along the half section lines of Sections 27, 26, and 25 of T17S, R31W to the east line of

S25, T17N, R31W; thence north to the south line of S19, T17N, R30W; thence east to the SE corner of the SW SW of S20, T17N, R30W, same point being on the Tontitown city limit line; thence in a generally northerly direction along the eastern city limit line to the P.O.B.

SECTION 2. That all ordinances and parts of ordinances in conflict herewith be, and are hereby repealed.

SECTION 3. That a duly certified copy of this ordinance shall be forwarded to the cities of Elm Springs, Springdale, Johnson, and Fayetteville, and to the Washington County Planning Office; and shall be filed of record in the Washington County Circuit Clerk's Office.

PASSED AND APPROVED THIS 6 DAY OF August, 2013.

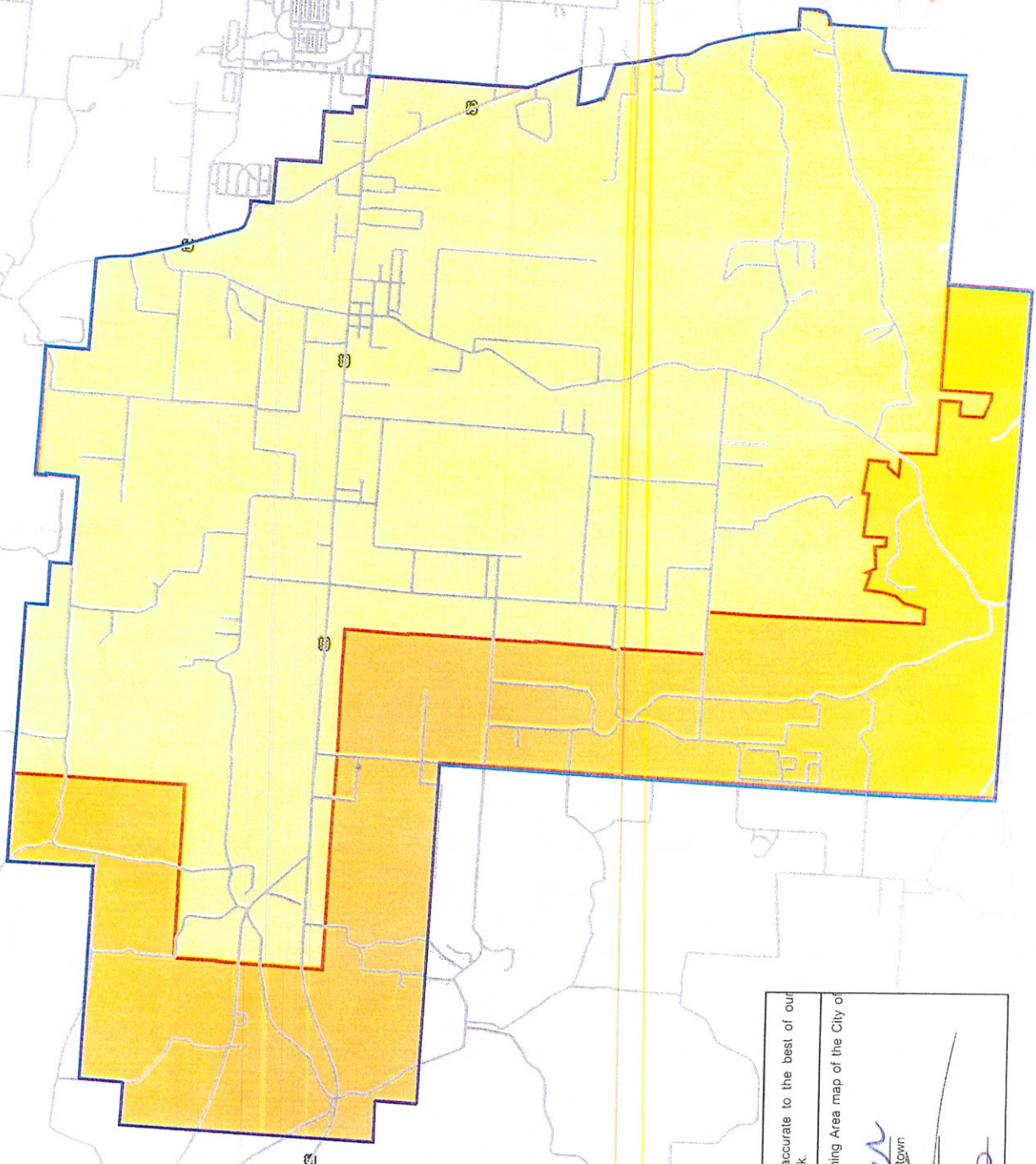
  
\_\_\_\_\_  
Mayor

ATTEST: Alidia Cellum  
City Clerk





2013-06-434



CITY OF TONTITOWN, ARKANSAS  
PLANNING AREA MAP  
TONTITOWN CITY LIMITS  
TONTITOWN PLANNING AREA

**Disclaimer:**  
Information depicted on this document is accurate to the best of our knowledge as is the date used in the title block.

This is to certify that this is the official Planning Area map of the City of Tontitown, Arkansas.

*Rich Wagner*  
Planning Commission Chairman, City of Tontitown

*Darcia Collins*  
Mayor, City of Tontitown  
Recorder/Treasurer, City of Tontitown

## CITY OF TONTITOWN PLANNING COMMISSION RESOLUTION

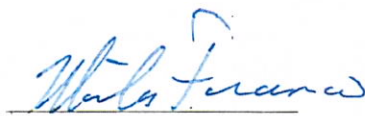
### TONTITOWN PLANNING AREA BOUNDARY DESCRIPTION AND MAP

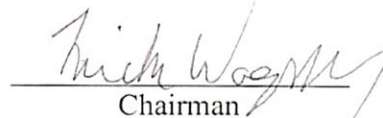
Pursuant to requirements of A.C.A. 14-56-412, the Tontitown Planning Commission hereby designates the following described area as its planning area. Said area is visually depicted on the attached map, entitled "City of Tontitown Planning Area Boundary – 2013," which is adopted herewith and made a part hereof.

All or parts of Sections 25, 26, 27, 28, 31, 32, 33, 34, 35, and 36 of T18N, R31W; all or parts of Sections 1, 2, 3, 4, 5, 6, 8, 9, 10, 11, 12, 13, 14, 15, 22, 23, 24, 25, 26, and 27 of T17N, R31W; all or parts of Sections 6, 7, 8, 17, 18, 19, and 20 of T17N, R30W; and part of S31, T18N, R30W; all in Washington County, Arkansas, and more particularly described as follows:

Beginning at a point on the Tontitown city limit line at its intersection with the north boundary of S36, T18N, R31W; thence in a generally westerly direction along the city limit line to the east line of S28, T18N, R31W; thence west to the NE corner of the SW SW of said S28; thence south to the SE corner of the NW NW of S33, T18N, R31W; thence west to the east line of S31, T18N, R31W; thence south to the NE corner of the SE of said S31; thence west to the NW corner of the NE SE of said S31; thence south to the south line of S6, T17N, R31W; thence east to the NW corner of S8, T17N, R31W; thence south to the SW corner of the NW NW of said S8; thence east to the west line of S10, T17N, R31W; thence south along the west lines of Sections 10, 15, 22, and 27 of T17S, R31W to the SW corner of the NW of S27, T17N, R31W; thence east along the half section lines of Sections 27, 26, and 25 of T17S, R31W to the east line of S25, T17N, R31W; thence north to the south line of S19, T17N, R30W; thence east to the SE corner of the SW SW of S20, T17N, R30W, same point being on the Tontitown city limit line; thence in a generally northerly direction along the eastern city limit line to the P.O.B.

Approved by the Tontitown Planning Commission this 23<sup>rd</sup> day of July, 2013.

  
Secretary

  
Chairman