

ORDINANCE 2005-5-217

AN ORDINANCE APPROVING A NEW PLANNING AREA MAP

WHEREAS, Arkansas' municipal planning statutes require planning commissions to prepare a planning area map and description, designating the area within the City's territorial jurisdiction for which they will make studies and prepare plans, ordinances, and regulations; and

WHEREAS, changing corporate and territorial jurisdiction boundaries have necessitated the consideration of a new planning area map and description; and

WHEREAS, after due consideration, the Tontitown Planning Commission has approved a new planning area and map; and

WHEREAS, it is the desire of the Mayor and City Council that said new planning area be formally approved by ordinance, thus replacing former such designations.

NOW, THEREFORE, BE IT ORDAINED BY THE CITY COUNCIL OF THE CITY OF TONTITOWN, ARKANSAS:

SECTION 1. That the "City of Tontitown Planning Area Boundary Map," which is attached hereto and made a part hereof, and the description thereof, which follows, both of which have been approved by the Tontitown Planning Commission, be and are hereby approved and adopted:

All or parts of Sections 25, 26, 31, 32, 33, 34, 35, and 36 of T18N, R31W; all or part of Sections 1, 2, 3, 4, 5, 6, 7, 8, 9, 10, 11, 12, 13, 14, 15, 16, 21, 22, 23, 24, 25, 26, 27, and 28 of T17N, R31W; all or part of Sections 6, 7, 8, 17, 18, 19, and 20 of T17N, R30W; and part of S31, T18N, R30W; all in Washington County, Arkansas, and more particularly described as follows:

Beginning at the NE corner of the NE of S36, T18N, R31W; thence west to the SW corner of the SE SW of S25, T18N, R31W; thence north to the NW corner of the SE SW of said S25; thence west to the NW corner of the SW SW of said S25; thence west to the NW corner of the SW SW of S26, T18N, R31W; thence south to the SW corner of said S26; thence west along the north boundary lines of Sections 34, 33, 32, and 31 of T18N, R31W to the NW corner of S31, T18N, R31W; thence south along the west boundaries of S31, T18N, R31W and Sections 6 and 7 of T17N, R31W to the SW corner of S7, T17N, R31W; thence east along the south boundary lines of Sections 7 and 8 of T17N, R31W to the SE corner of S8, T17N, R31W; thence south along the west boundaries of Sections 16, 21, and 28 of T17N, R31W to the SW corner of the NW of S28, T17N, R31W; thence east along the half section lines of Sections 28, 27, 26, and 25 of T17N, R31W to

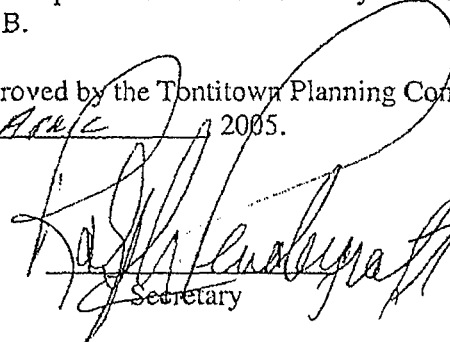
## TONTITOWN PLANNING AREA BOUNDARY DESCRIPTION AND MAP

Pursuant to requirements of A.C.A. 14-56-412, the Tontitown Planning Commission hereby designates the following described area as its planning area. Said area is visually depicted on the attached map, which is adopted herewith, and made a part hereof.


All or parts of Sections 25, 26, 31, 32, 33, 34, 35, and 36 of T18N, R31W; all or part of Sections 1, 2, 3, 4, 5, 6, 7, 8, 9, 10, 11, 12, 13, 14, 15, 16, 21, 22, 23, 24, 25, 26, 27, and 28 of T17N, R31W; all or part of Sections 6, 7, 8, 17, 18, 19, and 20 of T17N, R30W; and part of S31, T18N, R30W; all in Washington County, Arkansas, and more particularly described as follows:

Beginning at the NE corner of the NE of S36, T18N, R31W; thence west to the SW corner of the SE SW of S25, T18N, R31W; thence north to the NW corner of the SE SW of said S25; thence west to the NW corner of the SW SW of said S25; thence west to the NW corner of the SW SW of S26, T18N, R31W; thence south to the SW corner of said S26; thence west along the north boundary lines of Sections 34, 33, 32, and 31 of T18N, R31W to the NW corner of S31, T18N, R31W; thence south along the west boundaries of S31, T18N, R31W and Sections 6 and 7 of T17N, R31W to the SW corner of S7, T17N, R31W; thence east along the south boundary lines of Sections 7 and 8 of T17N, R31W to the SE corner of S8, T17N, R31W; thence south along the west boundaries of Sections 16, 21, and 28 of T17N, R31W to the SW corner of the NW of S28, T17N, R31W; thence east along the half section lines of Sections 28, 27, 26, and 25 of T17N, R31W to the SE corner of the NE of S25, T17N, R31W; thence north to the NE corner of S25, T17N, R31W; thence east to the NE corner of the NE of S30, T17N, R30W; thence east to the NE corner of the NW of the NW of S29, T17N, R30W, same point being on the Tontitown city limit line; thence generally northerly along the city limit line to a point on the centerline of S. H. 112, same point being the intersection of S. H. 112 and the north line of S20, T17N, R30W; thence northwesterly along S. H. 112 to a point on the west line of S8, T17N, R30W; thence north to the NE corner of the SE of S6, T17N, R30W, same point being on the Tontitown city limit line; thence generally northwesterly along the city limit line to a point on the east boundary of S36, T18N, R31W; thence north to the P.O.B.

Approved by the Tontitown Planning Commission this 24 day of April, 2005.

  
Secretary

  
Chairman

  
Doc ID: 008598040003 Type: REL  
Recorded: 06/15/2005 at 09:01:01 AM  
Fee Amt: \$14.00 Page 1 of 3  
Washington County, AR  
Bette Stamps Circuit Clerk  
File **2005-00025727**

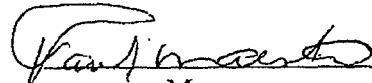
the SE corner of the NE of S25, T17N, R31W; thence north to the NE corner of S25, T17N, R31W; thence east to the NE corner of the NE of S30, T17N, R30W; thence east to the NE corner of the NW of the NW of S29, T17N, R30W, same point being on the Tontitown city limit line; thence generally northerly along the city limit line to a point on the centerline of S. H. 112, same point being the intersection of S. H. 112 and the north line of S20, T17N, R30W; thence northwesterly along S. H. 112 to a point on the west line of S8, T17N, R30W; thence north to the NE corner of the SE of S6, T17N, R30W, same point being on the Tontitown city limit line; thence generally northwesterly along the city limit line to a point on the east boundary of S36, T18N, R31W; thence north to the P.O.B.

SECTION 2. That all ordinances and parts of ordinances in conflict herewith be, and are hereby repealed.

SECTION 3. That a duly certified copy of this ordinance shall be forwarded to the cities of Elm Springs, Springdale, Johnson, and Fayetteville, and to the Washington County Planning Office, and shall be filed of record in the Washington County Circuit Clerk's Office.

PASSED AND APPROVED THIS 3 DAY OF May, 2005.

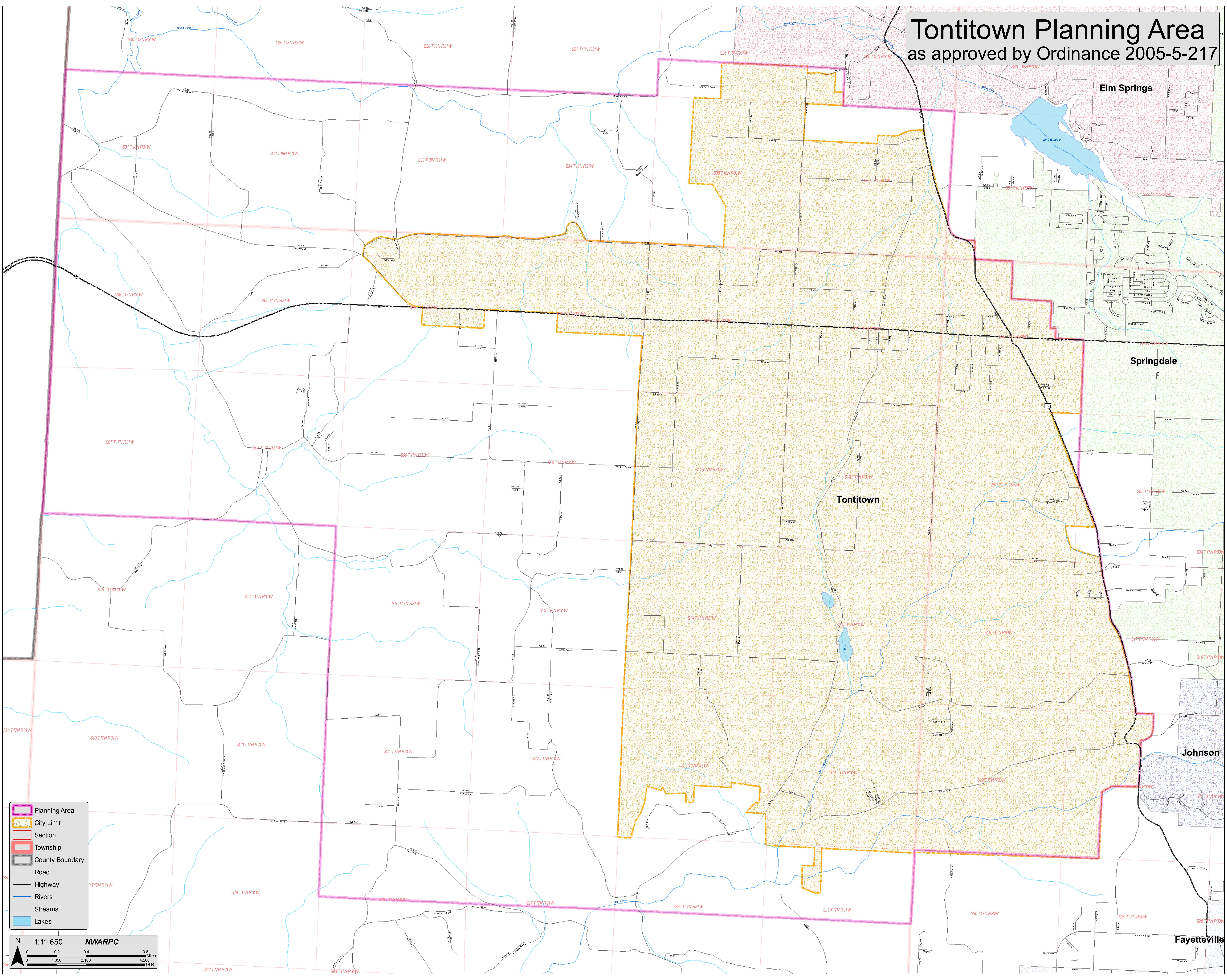
ATTEST:   
City Clerk

  
Mayor



# Tontitown Planning Area

as approved by Ordinance 2005-5-217



Planning Area

City Limit

Section

Township

County Boundary

Road

Highway

Rivers

Streams

Lakes

N

0 0.2 0.4 0.8 Miles

0 1,050 2,100 4,200 Feet

1:11,650

NWARPC