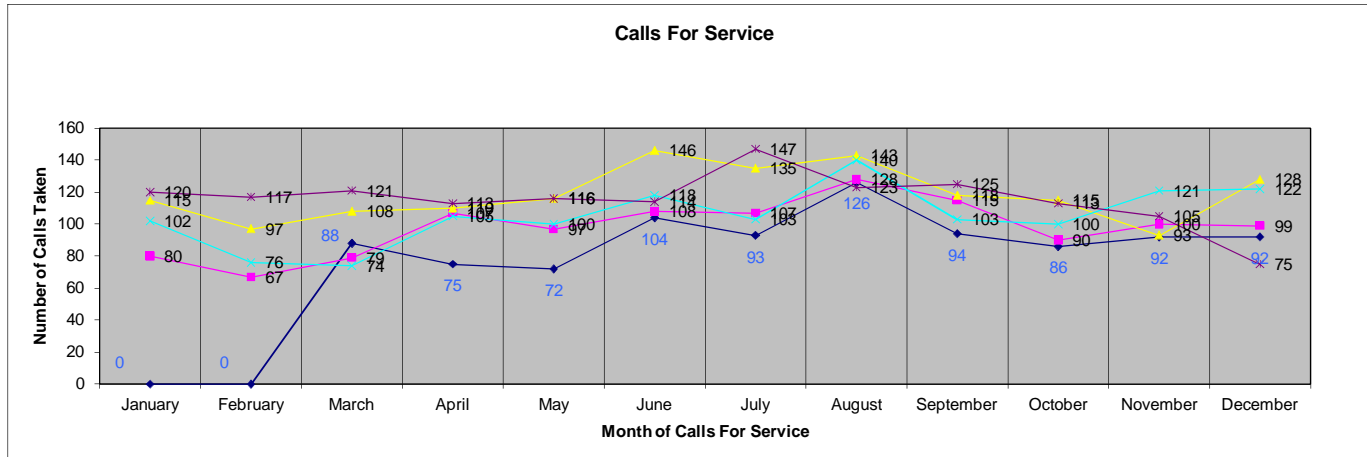


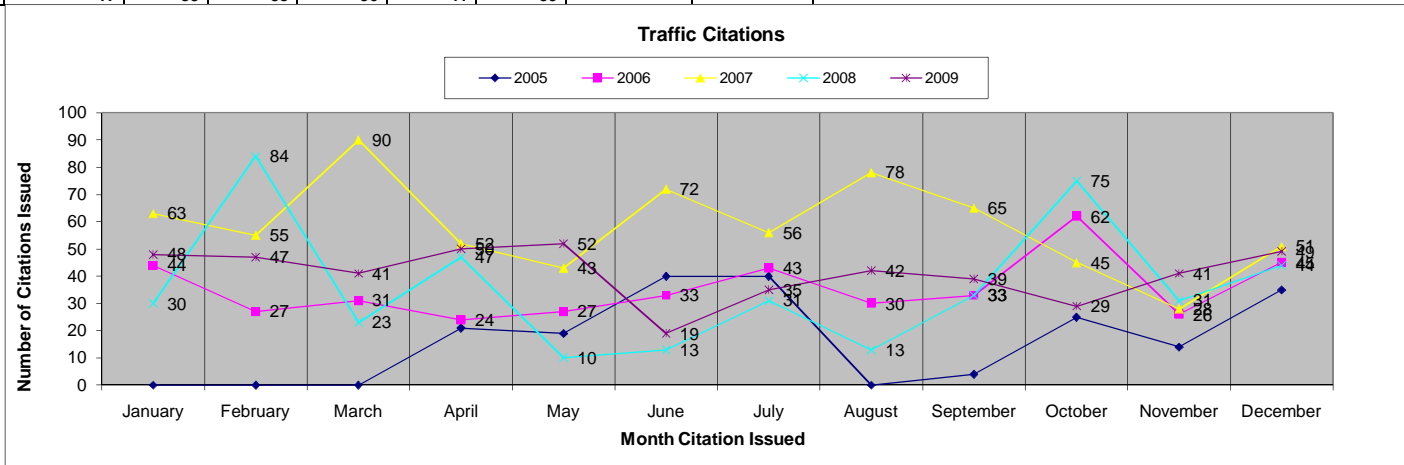
### Tontitown Monthly Stats - CFS DATA

Calls For Service	2005	2006	2007	2008	2009	2010	2005 VS 2006	2006 VS 2007	2007 VS 2008	2008 VS 2009	2009 VS 2010				
January	0	80	115	102	120	91	80	35	-13	18	-29				
February	0	67	97	76	117	74	67	30	-21	41	-43				
March	88	79	108	74	121		-9	29	-34	47	No Data				
April	75	107	110	105	113		32	3	-5	8	No Data				
May	72	97	116	100	116		25	19	-16	16	No Data				
June	104	108	146	118	114		4	38	-28	-4	No Data				
July	93	107	135	103	147		14	28	-32	-4	No Data				
August	126	128	143	140	123		2	15	-3	-17	No Data				
September	94	115	118	103	125		21	3	-15	22	No Data				
October	86	90	115	100	113		4	25	-15	13	No Data				
November	92	100	93	121	105		8	-7	28	-16	No Data				
December	92	99	128	122	75		7	29	-6	-47	No Data				
<b>Total Calls For Service</b>	922	1177	1424	1264	1389	165									
<b>Year to Year % Increase</b>		<b>27.7%</b>	<b>21.0%</b>	<b>-11.2%</b>	<b>9.9%</b>	<b>-28.7%</b>									
<b>Ave/Mo</b>	<b>77</b>	<b>98</b>	<b>119</b>	<b>105</b>	<b>116</b>	<b>83</b>									



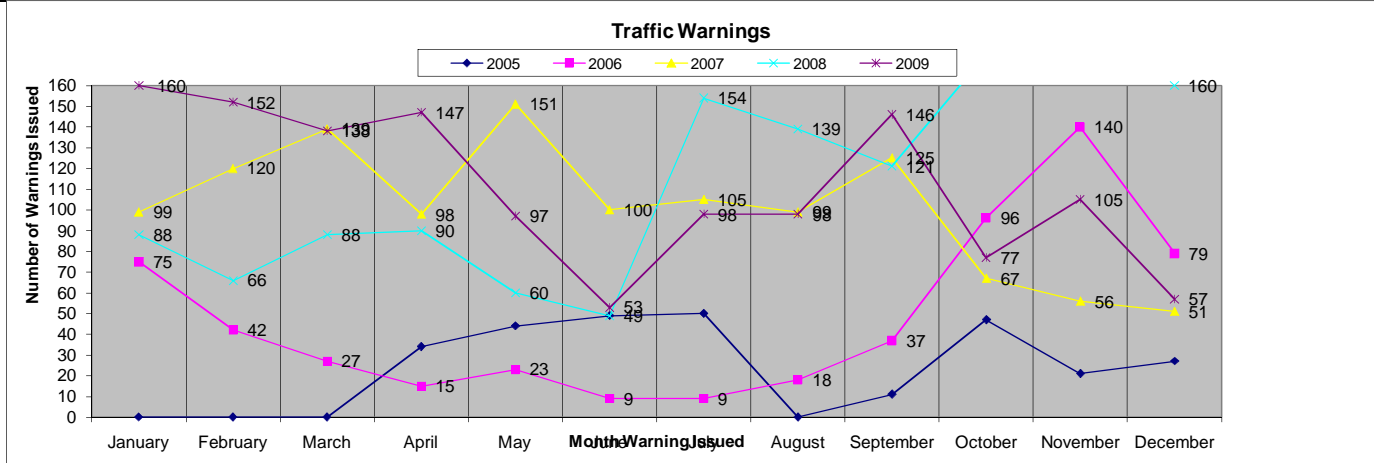
### Tontitown Monthly Stats - Traffic Citations

Traffic Citations	2005	2006	2007	2008	2009	2010	2005 VS 2006	2006 VS 2007	2007 VS 2008	2008 VS 2009	2009 VS 2010				
January	0	44	63	30	48	31	44	19	-33	18	-17				
February	0	27	55	84	47	47	27	28	29	-37	0				
March	0	31	90	23	41	41	31	59	-67	18	No Data				
April	21	24	52	47	50	47	3	28	-5	3	No Data				
May	19	27	43	10	52	47	8	16	-33	42	No Data				
June	40	33	72	13	19	33	-7	39	-59	6	No Data				
July	40	43	56	31	35	31	3	13	-25	4	No Data				
August	0	30	78	13	42	30	30	48	-65	29	No Data				
September	4	33	65	33	39	33	29	32	-32	6	No Data				
October	25	62	45	75	29	45	37	-17	30	-46	No Data				
November	14	26	28	31	41	28	12	2	3	10	No Data				
December	35	45	51	44	49	44	10	6	-7	5	No Data				
<b>Total Traffic Citations</b>	198	425	698	434	492	78									
<b>Year to Year % Increase</b>		114.6%	64.2%	-37.8%	13.4%	-4.9%									
<b>Ave/Mo</b>	17	35	58	36	41	39									



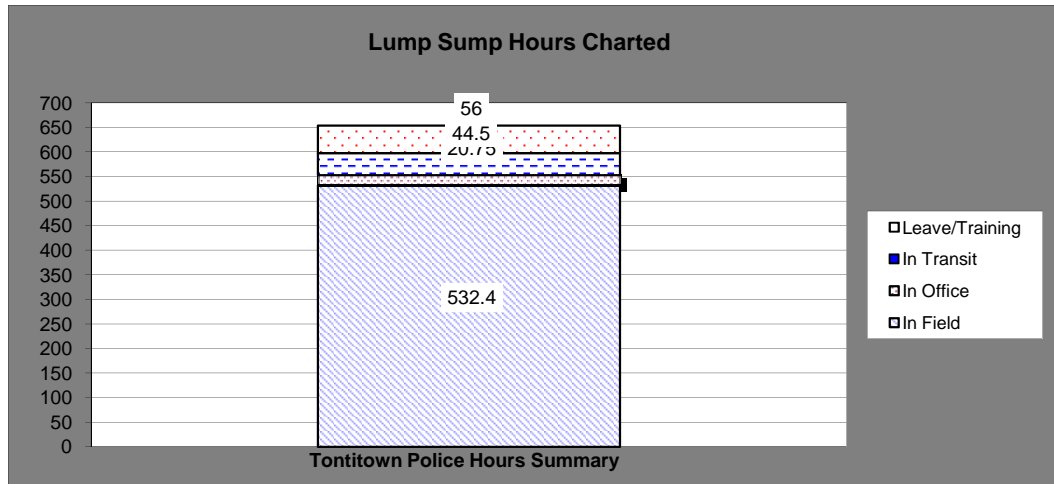
### Tontitown Monthly Stats - Traffic Warnings

Traffic Warnings	2005	2006	2007	2008	2009	2010	2005 VS 2006	2006 VS 2007	2007 VS 2008	2008 VS 2009	2009 VS 2010					
January	0	75	99	88	160	75	75	24	-11	72	-85					
February	0	42	120	66	152	93	42	78	-54	86	-59					
March	0	27	139	88	138		27	112	-51	50	NO DATA					
April	34	15	98	90	147		-19	83	-8	57	NO DATA					
May	44	23	151	60	97		-21	128	-91	37	NO DATA					
June	49	9	100	49	53		-40	91	-51	4	NO DATA					
July	50	9	105	154	98		-41	96	49	-56	NO DATA					
August	0	18	99	139	98		18	81	40	-41	NO DATA					
September	11	37	125	121	146		26	88	-4	25	NO DATA					
October	47	96	67	175	77		49	-29	108	-98	NO DATA					
November	21	140	56	178	105		119	-84	122	-73	NO DATA					
December	27	79	51	160	57		52	-28	109	-103	NO DATA					
<b>Total Traffic Warnings</b>	283	570	1210	1368	1,328	168										
<b>Year to Year % Increase</b>		101.4%	112.3%	13.1%	-2.9%	-24.1%										
<b>Ave/Mo</b>	24	48	101	114	111	84										



Tontitown Police Hours Recap

Date	In Field	In Office	In Transit	Leave/Training	Total Hours
Monday, February 01, 2010	20.5	0	3.5	0	24
Tuesday, February 02, 2010	17.5	1.5	6	0	25
Wednesday, February 03, 2010	13	3	0	0	16
Thursday, February 04, 2010	20.5	3	0.5	0	24
Friday, February 05, 2010	21.5	0.5	2	0	24
Saturday, February 06, 2010	18	2.5	3.5	0	24
Sunday, February 07, 2010	16	0	0	8	24
Monday, February 08, 2010	22	0	2	0	24
Tuesday, February 09, 2010	24.5	0	1	0	25.5
Wednesday, February 10, 2010	16.5	0.25	0.75	0	17.5
Thursday, February 11, 2010	26.15	0.25	1.75	0	28.15
Friday, February 12, 2010	31.75	1.75	2	0	35.5
Saturday, February 13, 2010	23.75	0.25	0	0	24
Sunday, February 14, 2010	14.25	0	1.75	0	16
Monday, February 15, 2010	21.75	1.5	1.75	0	25
Tuesday, February 16, 2010	22.25	1.25	0.5	0	24
Wednesday, February 17, 2010	13.75	1.25	1	0	16
Thursday, February 18, 2010	23.25	0.25	0.5	0	24
Friday, February 19, 2010	23	0.25	1.75	0	25
Saturday, February 20, 2010	21	0.5	2.5	0	24
Sunday, February 21, 2010	14.5	0	1.5	8	24
Monday, February 22, 2010	15	0	1	8	24
Tuesday, February 23, 2010	15.75	0.25	0	8	24
Wednesday, February 24, 2010	7.25	0.25	0.5	8	16
Thursday, February 25, 2010	14.75	0.25	1	8	24
Friday, February 26, 2010	19	1.25	3.75	8	32
Saturday, February 27, 2010	20.25	0.75	3	0	24
Sunday, February 28, 2010	15	0	1	0	16
	0	0	0	0	0
	0	0	0	0	0
	0	0	0	0	0
<b>Total</b>	<b>532.4</b>	<b>20.75</b>	<b>44.5</b>	<b>56</b>	<b>653.65</b>
<b>Average Per Day</b>	<b>17.2</b>	<b>0.7</b>	<b>1.4</b>		



	A	B	C	D	E	F
1	Reference #	Date	Code	Description	Citation/ Warning	Officer
2	C047778	2/1/2010	27-51-104	CARELESS DRIVING	C	RIDENOURE, STEVEN
3	C047778	2/1/2010	27-14-304	NO LICENSE PLATES	C	RIDENOURE, STEVEN
4	C047778	2/1/2010	000-00-101	NO PROOF OF INSURANCE	C	RIDENOURE, STEVEN
5	C047778	2/1/2010	27-14-903	FAILURE TO REG. VEH.	C	RIDENOURE, STEVEN
6	C047779	2/15/2010	27-51-104	CARELESS DRIVING	C	RIDENOURE, STEVEN
7	C047217	2/2/2010	27-51-301	DRIVING LEFT OF CENTER	C	FRISARD, LEON
8	C047217	2/2/2010	5-65-105	DRIVING ON SUSPENDED FOR DWI	C	FRISARD, LEON
9	C047217	2/2/2010	5-65-103	VIOLATION OF OMNIBUS DWI ACT	C	FRISARD, LEON
10	C047217	2/2/2010	000-00-101	NO PROOF OF INSURANCE	C	FRISARD, LEON
11	C047218	2/6/2010	27-16-303	DRIVING ON SUSPENDED/REVOKED LICENSE	C	FRISARD, LEON
12	C047219	2/7/2010	5-71-212	PUBLIC INTOXICATION	C	FRISARD, LEON
13	C047221	2/14/2010	27-16-303	DRIVING ON SUSPENDED/REVOKED LICENSE	C	FRISARD, LEON
14	C047222	2/26/2010	5-64-403	POSSESSION OF DRUG PARAPHERNALIA	C	FRISARD, LEON
15	C047223	2/28/2010	27-51-104	CARELESS DRIVING	C	FRISARD, LEON
16	C047224	2/28/2010	5-64-403	POSSESSION OF DRUG PARAPHERNALIA	C	FRISARD, LEON
17	W037063	2/12/2010	27-52-403	NO TURN SIGNAL	W	FRISARD, LEON
18	W037064	2/12/2010	27-51-201	SPEEDING	W	FRISARD, LEON
19	W037065	2/12/2010	27-52-403	NO TURN SIGNAL	W	FRISARD, LEON
20	W037066	2/13/2010	27-36-215	NO TAIL LIGHT	W	FRISARD, LEON
21	W037067	2/13/2010	27-51-301	DRIVING LEFT OF CENTER	W	FRISARD, LEON
22	W037067	2/13/2010	27-36-216	NO BRAKE LIGHT	W	FRISARD, LEON
23	W037068	2/13/2010	OTHER	ALL OTHER TRAFFIC VIOLATIONS	W	FRISARD, LEON
24	W037069	2/14/2010	27-36-216	NO BRAKE LIGHT	W	FRISARD, LEON
25	W037070	2/14/2010	OTHER	ALL OTHER TRAFFIC VIOLATIONS	W	FRISARD, LEON
26	W037071	2/14/2010	27-51-301	DRIVING LEFT OF CENTER	W	FRISARD, LEON
27	W037072	2/15/2010	CONTACT	CONTACT	W	FRISARD, LEON
28	W037074	2/16/2010	27-51-201	SPEEDING	W	FRISARD, LEON
29	W037075	2/19/2010	OTHER	ALL OTHER TRAFFIC VIOLATIONS	W	FRISARD, LEON
30	W037977	2/20/2010	27-51-201	SPEEDING	W	FRISARD, LEON
31	W037977	2/20/2010	27-51-301	DRIVING LEFT OF CENTER	W	FRISARD, LEON
32	W037978	2/20/2010	27-36-204	FAILURE TO TURN ON LIGHTS	W	FRISARD, LEON
33	W037979	2/26/2010	5-39-203	CRIMINAL TRESPASS / PREMISES	W	FRISARD, LEON
34	W037980	2/27/2010	27-16-601	LICENSE CARRIED AND EXHIBITED ON DEMAND	W	FRISARD, LEON
35	W037981	2/28/2010	27-36-215	NO TAIL LIGHT	W	FRISARD, LEON
36	C046873	2/1/2010	5-64-403	POSSESSION OF DRUG PARAPHERNALIA	C	RENNIE, THOMAS
37	C046874	2/1/2010	5-54-102	OBSTRUCTING GOVERNMENTAL OPERATIONS / FA	C	RENNIE, THOMAS
38	C046875	2/1/2010	5-54-102	OBSTRUCTING GOVERNMENTAL OPERATIONS / FA	C	RENNIE, THOMAS
39	C047276	2/6/2010	27-16-303	DRIVING ON SUSPENDED/REVOKED LICENSE	C	RENNIE, THOMAS
40	C047276	2/6/2010	27-37-702P	NO SEAT BELT (PC)	C	RENNIE, THOMAS
41	C047277	2/6/2010	27-34-103	NO CHILD RESTRAINT	C	RENNIE, THOMAS
42	C047277	2/6/2010	5-64-401	POSSESSION CONTROLLED SUBSTANCE	C	RENNIE, THOMAS
43	C047278	2/8/2010	27-16-303	DRIVING ON SUSPENDED/REVOKED LICENSE	C	RENNIE, THOMAS
44	C047279	2/10/2010	5-64-401	POSSESSION CONTROLLED SUBSTANCE	C	RENNIE, THOMAS
45	C047279	2/10/2010	5-64-403	POSSESSION OF DRUG PARAPHERNALIA	C	RENNIE, THOMAS
46	C047280	2/19/2010	27-16-303	DRIVING ON SUSPENDED/REVOKED LICENSE	C	RENNIE, THOMAS
47	C047280	2/19/2010	000-00-101	NO PROOF OF INSURANCE	C	RENNIE, THOMAS
48	C047281	2/20/2010	5-64-401	POSSESSION CONTROLLED SUBSTANCE	C	RENNIE, THOMAS
49	C047282	2/23/2010	27-16-303	DRIVING ON SUSPENDED/REVOKED LICENSE	C	RENNIE, THOMAS
50	C047282	2/23/2010	27-37-702P	NO SEAT BELT (PC)	C	RENNIE, THOMAS
51	W034708	2/2/2010	27-37-601	NOISY MUFFLER	W	RENNIE, THOMAS
52	W034709	2/5/2010	27-37-601	NOISY MUFFLER	W	RENNIE, THOMAS

	A	B	C	D	E	F
1	Reference #	Date	Code	Description	Citation/ Warning	Officer
53	W034710	2/13/2010	27-14-716	IMPROPER DISPLAY OF LIC	W	RENNIE, THOMAS
54	W034711	2/15/2010	27-51-201	SPEEDING	W	RENNIE, THOMAS
55	W034712	2/16/2010	27-37-702P	NO SEAT BELT (PC)	W	RENNIE, THOMAS
56	W034713	2/19/2010	27-51-301	DRIVING LEFT OF CENTER	W	RENNIE, THOMAS
57	W034714	2/20/2010	OTHER	ALL OTHER TRAFFIC VIOLATIONS	W	RENNIE, THOMAS
58	C037138	2/9/2010	27-36-209	ONE OR NO HEADLIGHTS	C	HAMMERSLA, SCOTT
59	C047120	2/3/2010	27-51-201	SPEEDING	C	HAMMERSLA, SCOTT
60	C047120	2/3/2010	5-65-103B	DWI	C	HAMMERSLA, SCOTT
61	C047120	2/3/2010	5-65-205	VIOL IMPLIED CONSENT	C	HAMMERSLA, SCOTT
62	C047121	2/4/2010	000-00-101	NO PROOF OF INSURANCE	C	HAMMERSLA, SCOTT
63	C047122	2/5/2010	000-00-101	NO PROOF OF INSURANCE	C	HAMMERSLA, SCOTT
64	C047122	2/5/2010	27-14-717	EXPIRED VEH LIC	C	HAMMERSLA, SCOTT
65	C047123	2/9/2010	000-00-101	NO PROOF OF INSURANCE	C	HAMMERSLA, SCOTT
66	C047124	2/9/2010	27-16-602	NO DRIVERS LICENSE	C	HAMMERSLA, SCOTT
67	C047124	2/9/2010	27-36-215	NO TAIL LIGHT	C	HAMMERSLA, SCOTT
68	C047125	2/10/2010	000-00-101	NO PROOF OF INSURANCE	C	HAMMERSLA, SCOTT
69	C047125	2/10/2010	27-52-103	RUN STOP SIGN	C	HAMMERSLA, SCOTT
70	C048251	2/11/2010	000-00-101	NO PROOF OF INSURANCE	C	HAMMERSLA, SCOTT
71	C048252	2/11/2010	27-16-804	DRIVING ON RESTRICTED DL	C	HAMMERSLA, SCOTT
72	C048253	2/17/2010	27-51-201	SPEEDING	C	HAMMERSLA, SCOTT
73	C048254	2/17/2010	27-51-201	SPEEDING	C	HAMMERSLA, SCOTT
74	C048256	2/25/2010	000-00-101	NO PROOF OF INSURANCE	C	HAMMERSLA, SCOTT
75	W03137	2/9/2010	27-51-201	SPEEDING	W	HAMMERSLA, SCOTT
76	W036172	2/3/2010	27-51-201	SPEEDING	W	HAMMERSLA, SCOTT
77	W036173	2/4/2010	27-51-201	SPEEDING	W	HAMMERSLA, SCOTT
78	W036174	2/4/2010	27-14-304	NO LICENSE PLATES	W	HAMMERSLA, SCOTT
79	W036175	2/4/2010	27-36-209	ONE OR NO HEADLIGHTS	W	HAMMERSLA, SCOTT
80	W037126	2/4/2010	27-36-209	ONE OR NO HEADLIGHTS	W	HAMMERSLA, SCOTT
81	W037127	2/4/2010	27-36-216	NO BRAKE LIGHT	W	HAMMERSLA, SCOTT
82	W037128	2/5/2010	27-36-216	NO BRAKE LIGHT	W	HAMMERSLA, SCOTT
83	W037128	2/5/2010	27-36-215	NO TAIL LIGHT	W	HAMMERSLA, SCOTT
84	W037129	2/5/2010	27-36-209	ONE OR NO HEADLIGHTS	W	HAMMERSLA, SCOTT
85	W037130	2/5/2010	27-51-201	SPEEDING	W	HAMMERSLA, SCOTT
86	W037131	2/5/2010	27-36-209	ONE OR NO HEADLIGHTS	W	HAMMERSLA, SCOTT
87	W037132	2/5/2010	27-36-209	ONE OR NO HEADLIGHTS	W	HAMMERSLA, SCOTT
88	W037133	2/6/2010	27-36-209	ONE OR NO HEADLIGHTS	W	HAMMERSLA, SCOTT
89	W037134	2/6/2010	27-36-209	ONE OR NO HEADLIGHTS	W	HAMMERSLA, SCOTT
90	W037135	2/6/2010	27-36-215	NO TAIL LIGHT	W	HAMMERSLA, SCOTT
91	W037136	2/6/2010	27-36-215	NO TAIL LIGHT	W	HAMMERSLA, SCOTT
92	W037139	2/9/2010	27-36-209	ONE OR NO HEADLIGHTS	W	HAMMERSLA, SCOTT
93	W037140	2/10/2010	5-39-305B	CRIMINAL TRESPASS ON LAND / CROP LAND	W	HAMMERSLA, SCOTT
94	W037141	2/10/2010	27-37-305	NO REAR VIEW MIRROR	W	HAMMERSLA, SCOTT
95	W037142	2/11/2010	27-14-717	EXPIRED VEH LIC	W	HAMMERSLA, SCOTT
96	W037143	2/11/2010	27-36-209	ONE OR NO HEADLIGHTS	W	HAMMERSLA, SCOTT
97	W037143	2/11/2010	OTHER	ALL OTHER TRAFFIC VIOLATIONS	W	HAMMERSLA, SCOTT
98	W037144	2/11/2010	27-36-209	ONE OR NO HEADLIGHTS	W	HAMMERSLA, SCOTT
99	W037145	2/11/2010	27-36-209	ONE OR NO HEADLIGHTS	W	HAMMERSLA, SCOTT
100	W037146	2/11/2010	27-36-209	ONE OR NO HEADLIGHTS	W	HAMMERSLA, SCOTT
101	W037147	2/12/2010	27-36-209	ONE OR NO HEADLIGHTS	W	HAMMERSLA, SCOTT
102	W037147	2/12/2010	27-36-216	NO BRAKE LIGHT	W	HAMMERSLA, SCOTT
103	W037148	2/12/2010	27-36-215	NO TAIL LIGHT	W	HAMMERSLA, SCOTT

	A	B	C	D	E	F
1	Reference #	Date	Code	Description	Citation/ Warning	Officer
104	W037149	2/12/2010	27-36-209	ONE OR NO HEADLIGHTS	W	HAMMERSLA, SCOTT
105	W037150	2/12/2010	27-36-215	NO TAIL LIGHT	W	HAMMERSLA, SCOTT
106	W037826	2/12/2010	27-51-401	IMPROPER TURN /U-TURN	W	HAMMERSLA, SCOTT
107	W037827	2/12/2010	27-14-304	NO LICENSE PLATES	W	HAMMERSLA, SCOTT
108	W037828	2/13/2010	27-36-215	NO TAIL LIGHT	W	HAMMERSLA, SCOTT
109	W037829	2/14/2010	27-14-304	NO LICENSE PLATES	W	HAMMERSLA, SCOTT
110	W037830	2/16/2010	27-36-209	ONE OR NO HEADLIGHTS	W	HAMMERSLA, SCOTT
111	W037831	2/17/2010	27-14-304	NO LICENSE PLATES	W	HAMMERSLA, SCOTT
112	W037832	2/17/2010	27-36-215	NO TAIL LIGHT	W	HAMMERSLA, SCOTT
113	W037833	2/18/2010	27-36-209	ONE OR NO HEADLIGHTS	W	HAMMERSLA, SCOTT
114	W037833	2/18/2010	27-36-215	NO TAIL LIGHT	W	HAMMERSLA, SCOTT
115	W037834	2/18/2010	OTHER	ALL OTHER TRAFFIC VIOLATIONS	W	HAMMERSLA, SCOTT
116	W037835	2/18/2010	27-36-215	NO TAIL LIGHT	W	HAMMERSLA, SCOTT
117	W037836	2/18/2010	27-36-209	ONE OR NO HEADLIGHTS	W	HAMMERSLA, SCOTT
118	W037836	2/18/2010	27-36-216	NO BRAKE LIGHT	W	HAMMERSLA, SCOTT
119	W037836	2/18/2010	27-36-215	NO TAIL LIGHT	W	HAMMERSLA, SCOTT
120	W037837	2/26/2010	27-36-215	NO TAIL LIGHT	W	HAMMERSLA, SCOTT
121	W037838	2/19/2010	27-36-216	NO BRAKE LIGHT	W	HAMMERSLA, SCOTT
122	W037838	2/19/2010	27-36-215	NO TAIL LIGHT	W	HAMMERSLA, SCOTT
123	W037839	2/19/2010	27-36-215	NO TAIL LIGHT	W	HAMMERSLA, SCOTT
124	W037840	2/19/2010	27-36-209	ONE OR NO HEADLIGHTS	W	HAMMERSLA, SCOTT
125	W037840	2/19/2010	27-36-215	NO TAIL LIGHT	W	HAMMERSLA, SCOTT
126	W037841	2/20/2010	27-51-301	DRIVING LEFT OF CENTER	W	HAMMERSLA, SCOTT
127	W037841	2/20/2010	27-52-103	RUN STOP SIGN	W	HAMMERSLA, SCOTT
128	W037842	2/20/2010	27-36-209	ONE OR NO HEADLIGHTS	W	HAMMERSLA, SCOTT
129	W037843	2/23/2010	27-36-215	NO TAIL LIGHT	W	HAMMERSLA, SCOTT
130	W037844	2/23/2010	27-36-209	ONE OR NO HEADLIGHTS	W	HAMMERSLA, SCOTT
131	W037844	2/23/2010	27-36-216	NO BRAKE LIGHT	W	HAMMERSLA, SCOTT
132	W037845	2/24/2010	27-51-201	SPEEDING	W	HAMMERSLA, SCOTT
133	W037845	2/24/2010	27-36-209	ONE OR NO HEADLIGHTS	W	HAMMERSLA, SCOTT
134	W037846	2/24/2010	27-51-201	SPEEDING	W	HAMMERSLA, SCOTT
135	W037847	2/25/2010	27-36-216	NO BRAKE LIGHT	W	HAMMERSLA, SCOTT
136	W037847	2/25/2010	27-36-215	NO TAIL LIGHT	W	HAMMERSLA, SCOTT
137	W037848	2/25/2010	27-36-215	NO TAIL LIGHT	W	HAMMERSLA, SCOTT
138	W037849	2/25/2010	27-36-216	NO BRAKE LIGHT	W	HAMMERSLA, SCOTT
139	W037849	2/25/2010	27-36-215	NO TAIL LIGHT	W	HAMMERSLA, SCOTT
140	W037850	2/26/2010	27-51-201	SPEEDING	W	HAMMERSLA, SCOTT
141	W038201	2/26/2010	27-36-209	ONE OR NO HEADLIGHTS	W	HAMMERSLA, SCOTT